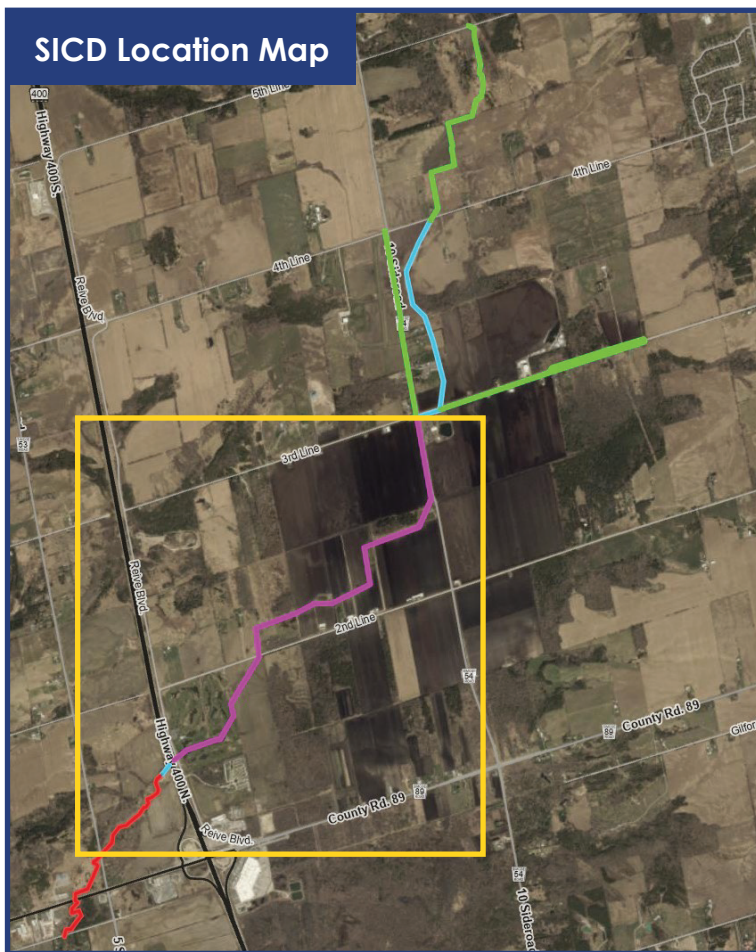


2026 Update

The **South Innisfil Creek Drain (SICD)** is a municipal drain that is being improved under the Drainage Act. This multi-year project will have physical and financial impacts on properties that may come up for sale in the coming years within Innisfil.



SICD Location Map

Construction Schedule

Construction on the SICD began in 2021. Phase 1, Phase 2, Phase 3, and Phase 4 as seen in the Location Map (left) are now complete.

The remaining work, including the cleanout of the low-flow, main drain from the 3rd Line downstream to 5th Sideroad (as shown inside the yellow box), will be completed this year.

Innisfil Creek Drain

The SICD was created over 100 years ago in response to repeated flooding of the properties around the South Innisfil Creek. The watershed surrounding the drains collects runoff from over 800 properties across Innisfil and Bradford West Gwillimbury and directs it to one of the drains. The main drain, in turn, empties into the Nottawasaga River.

All properties within the watershed contribute runoff in some way to the drain, so this project will provide an improved outlet for everyone.

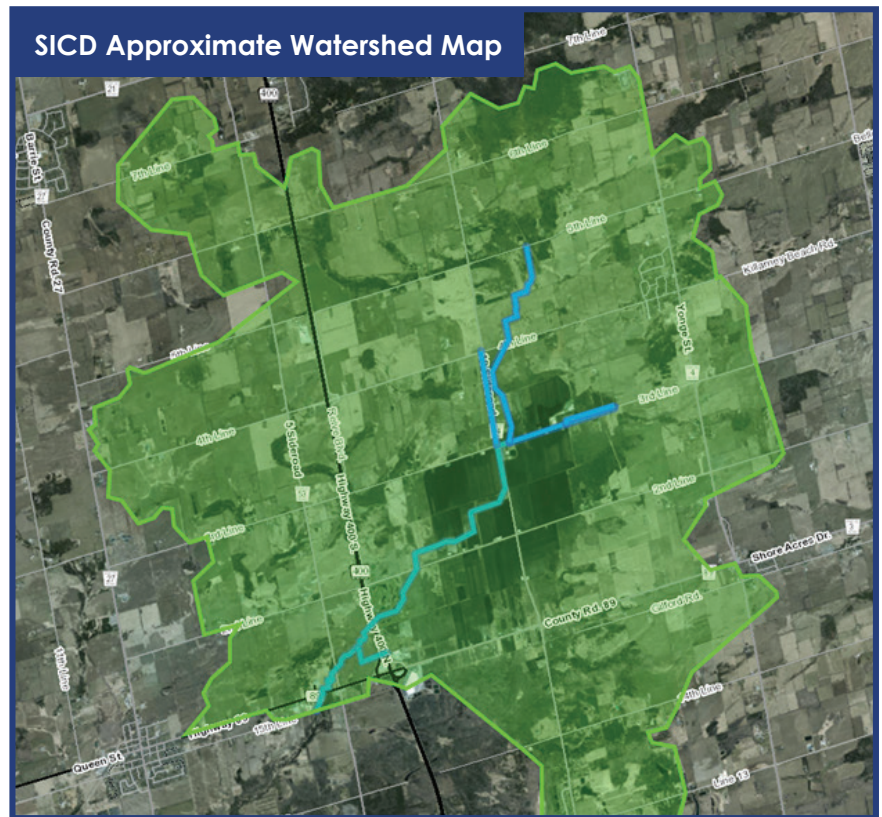
- Phase 1** – January 2021 to November 2021
- Phase 2** – November 2021 to November 2022
- Phase 3** – November 2022 to November 2023
- Phase 4** – November 2023 to November 2025

SICD Watershed

Almost 900 properties (lands and roads) within the approximate 8,000 hectare watershed contribute runoff in some way to the drain. After the proposed improvements and ecological enhancements, this drain should provide a much improved outlet for everyone, especially the 1,000 hectare Market Garden area.

Questions?

Any questions regarding the approved construction or possible physical / financial impacts to properties can be directed to Jeremy Nyenhuis, Drainage Superintendent, at jnyenhuis@innisfil.ca.



What's a municipal drain?

Perhaps you've just purchased property and been told by your municipality that you are assessed into a municipal drain. You're probably wondering, what does this mean? How does it affect me? What will it cost?

A municipal drain is a communal drainage system created in partnership between landowners and the municipality. The terms of that partnership—including cost sharing and maintenance—are dictated by the Drainage Act. Physically, a municipal drain is simply a drainage system. Most municipal drains are either ditches or closed systems such as pipes or tiles buried in the ground. They can also include structures such as pumping stations, buffer strips, stormwater detention ponds, culverts and bridges. The local municipality is responsible for maintaining a municipal drain on behalf of landowners within the watershed of the drain.

The Town of Innisfil has 24 municipal drains spread throughout the municipality, which have numerous properties that can be affected both physically and financially when maintenance works are required on any one of these 24 drains.