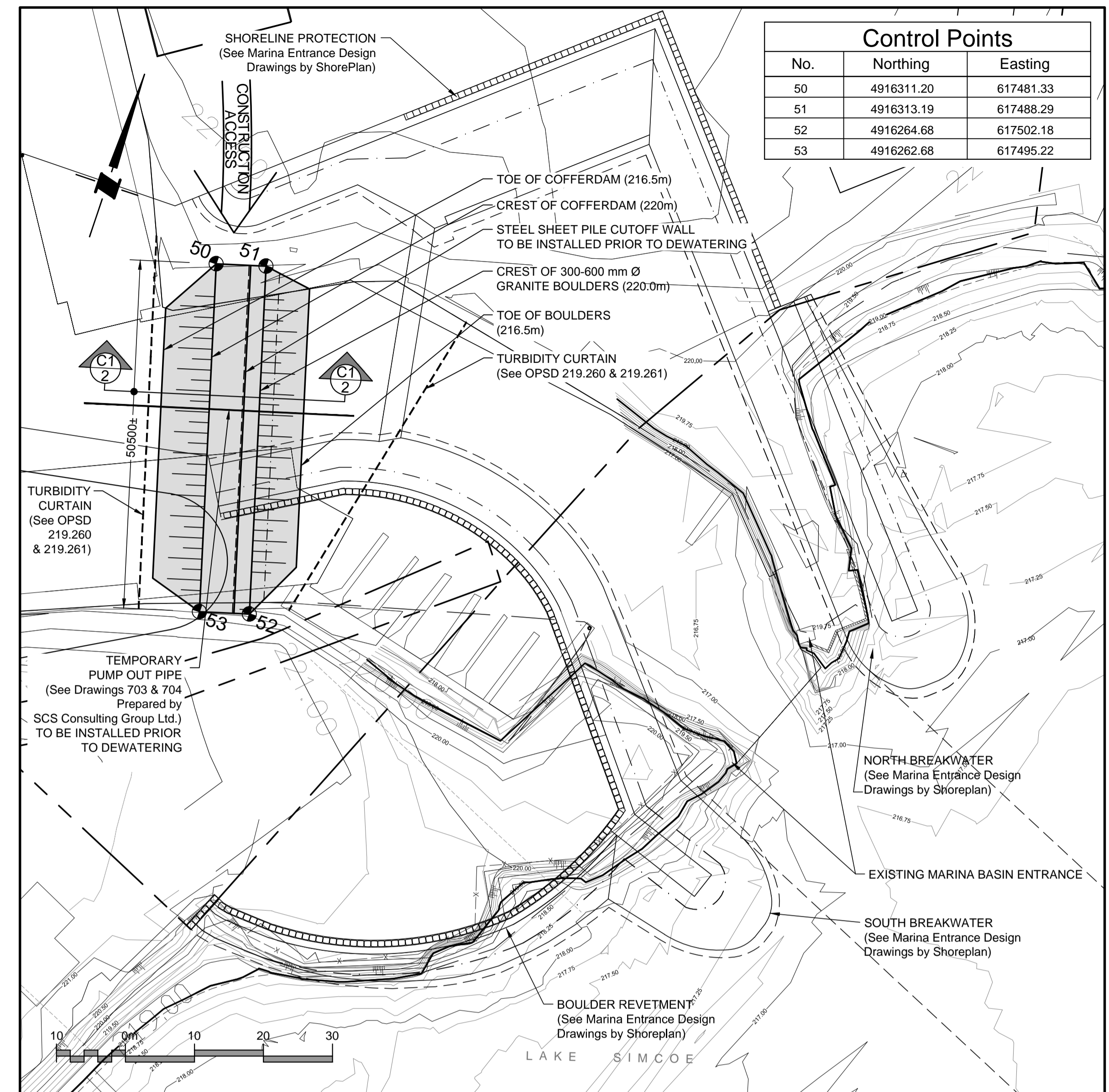


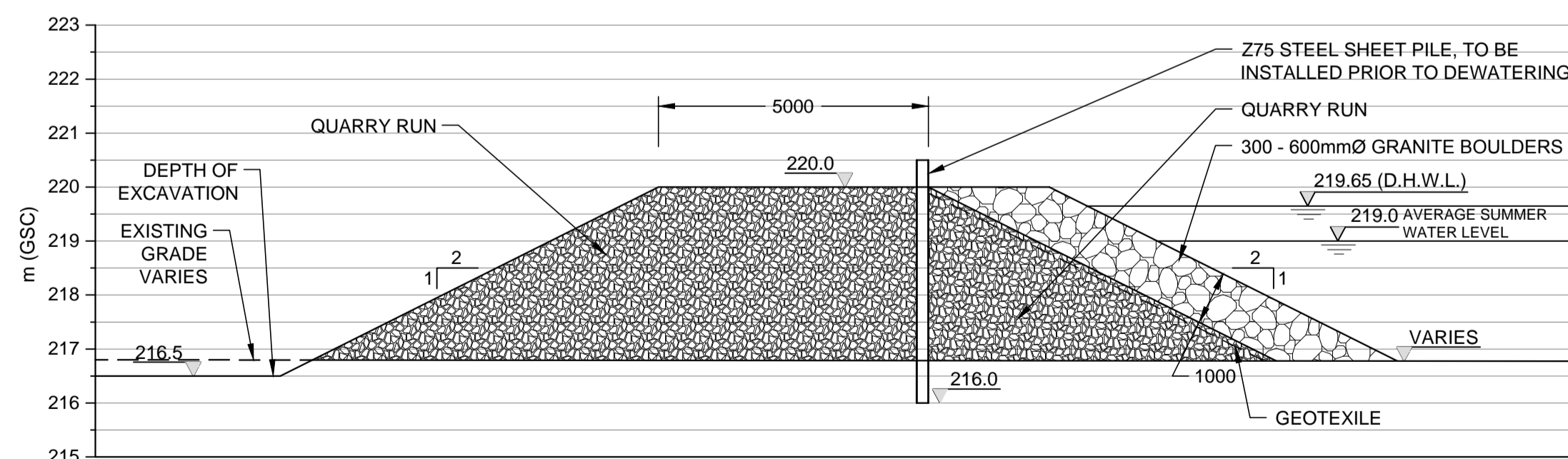
Scale 1:2500

COFFERDAM SITE PLAN



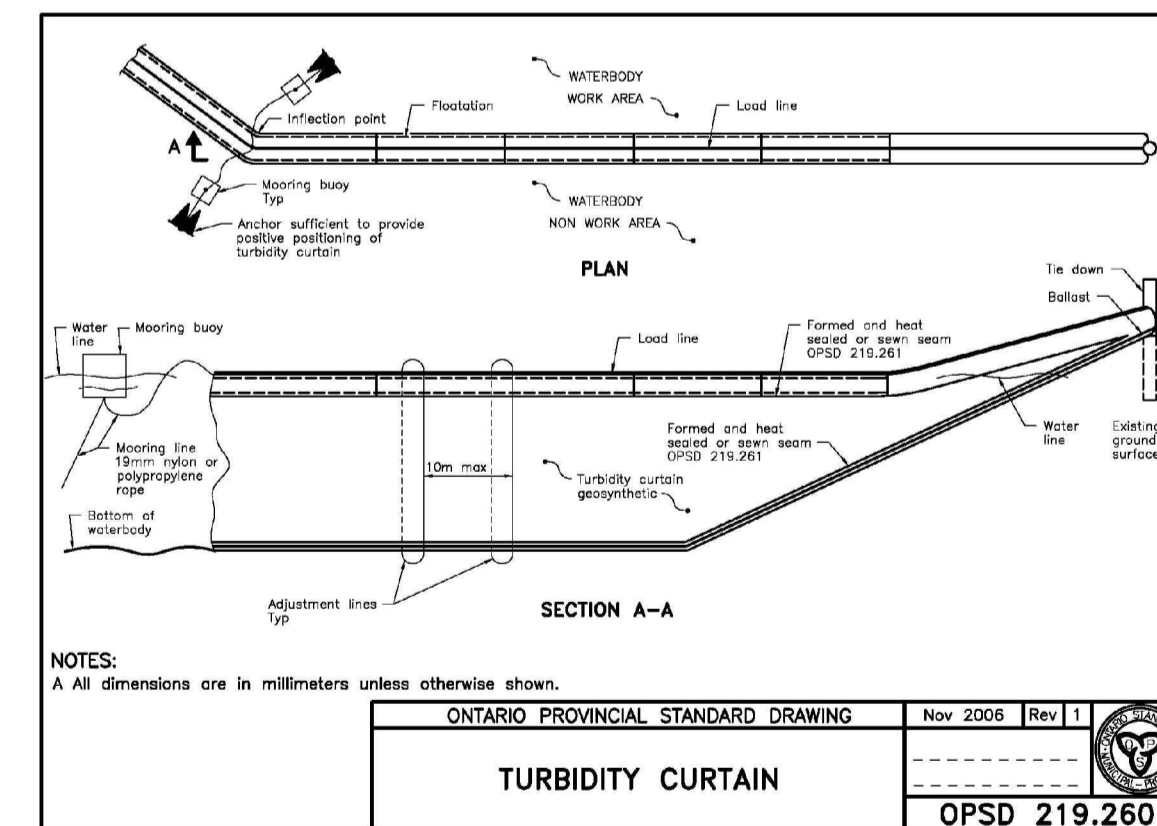
Scale 1:500

COFFERDAM DETAILED SITE PLAN



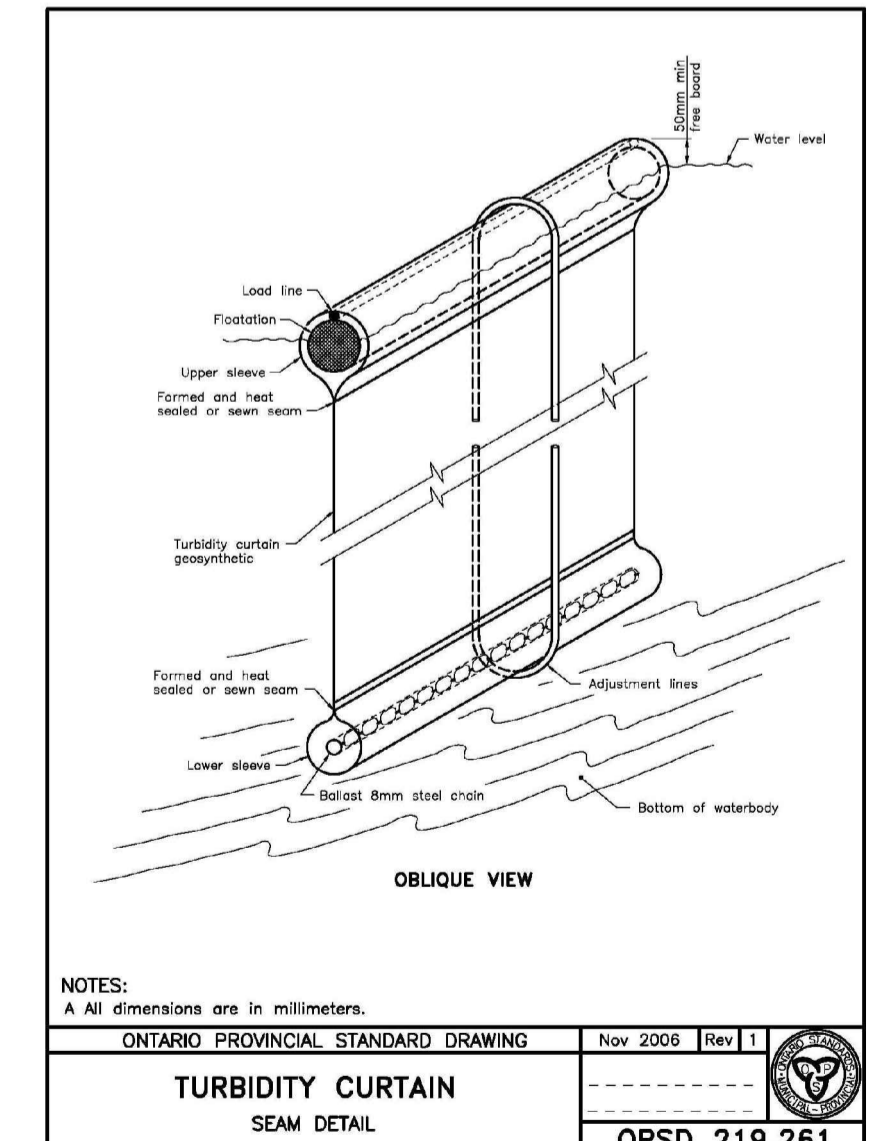
Scale 1:100

SECTION C1



GENERAL SPECIFICATIONS

- Quarry run material shall be hard, durable, crushed quarried, free from silt, clay, organic matter and other foreign substances and free from splits, seams or defects likely to impair its soundness during handling with relative density 2.7, ±0.15. Provide well graded mixture of rock with a maximum partial size of 200 mm diameter. Place quarry run material to lines and grades indicated on the Contract Drawings.
- Granite Boulders shall be hard, dense, round stone, free from seams, cracks or other structural defects with relative density 2.7, ±0.15. Boulders shall be rock, ranging in size as specified on the Contract Drawings. Minimum 60% of the total volume shall contain stone of individual size greater than the mid point of the specified size range. Specified dimensions represent the smallest dimension of individual boulder pieces. In case of dispute regarding the size of the material the contractor shall provide proof of size at his expense. Place boulders to lines and grades indicated on the Contract Drawings.
- Geotextile shall be non-woven pervious, inert and durable. The material shall be Terrafix 600R or an approved equal. Individual filter fabric sheets shall reach from the top of the revetment to the toe. Provide minimum 800 mm overlap width in the across the slope direction when placing a new section of filter fabric adjacent to a previously placed section. Repair any damaged filter fabric by placing second layer, overlaying the damaged area by not less than 1500mm in all directions beyond the damaged area.
- Steel Sheet Pile shall be CMRM 'Z75' or approved equal. Type of steel shall be CSA G40.20/G40.21 Gr 350W.



GENERAL NOTES

- All dimensions in millimeters unless indicated otherwise.
- All elevations in meters, GSC.
- Existing 219.0 metre contour is identified to represent average water line.
- Property Limits to be established by owner prior to start of construction.

No.	Date	Revisions	By
4	Feb08/11	Cofferdam Rotated	
3	Mar.08/10	Issued for Approval	
2	Jan 07/10	Issued for Review Only	
1	May12/09	Issued for Review Only	

SHOREPLAN
Shoreplan Engineering Limited
55 Eglinton Avenue E, Suite 800
Toronto, Ontario
M4P 1G8 Tel. (416) 487-4756



Project Title
BIG BAY POINT RESORT COMMUNITY
by
Kimvar Enterprises Inc.

Drawing Title
COFFERDAM

Drawn By D.Y.
Checked By M.S.
Date of Issue

Scale
AS SHOWN

Project No. 08-1125 Sheet No. C-01