

**BIG BAY POINT
HEDGEROW AT 13TH LINE
WEST EDGE AT BIG BAY POINT ROAD INTERSECTION**

Plan Reference Dwg TA-1
Dated December 23, 2008

**TREE INVENTORY AND ASSESSMENT REPORT
Appendix 'A'**

Recommendation Categories

- A - Removal required due to conflict with proposed development and grading
- B - Removal recommended due to health and rate of species.
- C - Tree to be retained due to location outside limit of development / grading.
- D - Tree to be retained where proposed grading allows.
- E - Existing small trees and shrubs to be transplanted as directed.
- F - Tree recommended to be assessed and pruned by Arborist (on adjacent property, owner permission required)
- H - Hazard, dead or dying tree

- Rating
G = Good
F = Fair
P = Poor

Photo	Tree Number	Location Within Development Property	Species		Approx. Size (m dia) (inch)		Condition / Comments / Understorey	Rating	Potential For Preservation		Recommendations (see list)
			Botanical Name	Common Name	D.B.H.*				High	Low	
1	1	Hedgerow along 13th Line Property Edge, Numbered from West to East ↓	<i>Acer saccharum</i>	Sugar Maple	0.50	20		P		x	H
	2		<i>Fraxinus sp.</i>	Ash	0.12	5		F - G	x		C
3	3		<i>Acer saccharinum</i>	Silver Maple	0.42	17	multi-stem, 1 stem dead	F - P	x		D, F
	4		<i>Ulmus sp.</i>	Elm	0.17	7		F	x		C
	5		<i>Crataegus sp.</i>	Hawthorn	0.10	4	multi-stem	F	x		C
2/3	6		<i>Acer saccharinum</i>	Silver Maple	2 @ 0.45	2 @ 18	centre dieback	F - P	x		C, B, F
2/3	7		<i>Acer saccharinum</i>	Silver Maple	0.45-0.50	18-20	centre leader dead	F - P	x		C, B, F
	8		<i>Ulmus sp.</i>	Elm	0.27	11	young ash to the west of tree	F	x		C
	9		<i>Crataegus sp.</i>	Hawthorn	0.10-0.12	4-5	several trees, multi-stem	F	x		C
	10		<i>Acer saccharum</i>	Sugar Maple	0.35	14		F - G	x		C, F
	11		<i>Tilia americana</i>	Basswood	2 @ 0.5	2 @ 20	two trees, half dead	P		x	B
	12		<i>Fraxinus sp.</i>	Ash	3 @ 0.15	3 @ 6		F - G	x		C
	13		<i>Crataegus sp.</i>	Hawthorn	3 @ 0.12	3 @ 5		F - G	x		C
	14		<i>Tilia americana</i>	Basswood	0.27	11	single stem	F - G	x		C
4	15		<i>Acer saccharum</i>	Sugar Maple	0.50	20	hawthorn at base	F - G	x		C
	16		<i>Tilia americana</i>	Basswood	0.27	11		F - G	x		C
	17		<i>Tilia americana</i>	Basswood	0.23	9		F	x		C
	18		<i>Tilia americana</i>	Basswood	0.23	9		F	x		C
	19		<i>Crataegus sp.</i>	Hawthorn	0.1-0.12	4-5		F	x		C
	20		<i>Acer saccharum</i>	Sugar Maple	0.45	18	dieback	F	x		C, F
5	21		<i>Quercus rubra</i>	Oak	0.40	16		F - G	x		C
	22		<i>Tilia americana</i>	Basswood	0.2-0.27	8-11	4 stem	F	x		C
6	23		<i>Tilia americana</i>	Basswood	0.17-0.2	7-8	evidence of fungus, stem rot	F - P		x	B
	24		<i>Fraxinus sp.</i>	Ash	0.2-0.25	8-10		F - G	x		C
	25		<i>Fraxinus sp.</i>	Ash	0.38	15		F - G	x		C
	26		<i>Fraxinus sp.</i>	Ash	0.20	8		G	x		C
	27		<i>Crataegus sp.</i>	Hawthorn	0.10	4	multi-stem	F	x		C

**BIG BAY POINT
HEDGEROW AT 13TH LINE
WEST EDGE AT BIG BAY POINT ROAD INTERSECTION**

Plan Reference Dwg TA-1
Dated December 23, 2008

**TREE INVENTORY AND ASSESSMENT REPORT
Appendix 'A'**

Recommendation Categories

- A - Removal required due to conflict with proposed development and grading
 B - Removal recommended due to health and rate of species.
 C - Tree to be retained due to location outside limit of development / grading.
 D - Tree to be retained where proposed grading allows.
 E - Existing small trees and shrubs to be transplanted as directed.
 F - Tree recommended to be assessed and pruned by Arborist (on adjacent property, owner permission required)
 H - Hazard, dead or dying tree

Rating
 G = Good
 F = Fair
 P = Poor

Photo	Tree Number	Location Within Development Property	Species		Approx. Size (m dia) (inch)		Condition / Comments / Understorey	Rating	Potential For Preservation		Recommendations (see list)	
			Botanical Name	Common Name	D.B.H.*				High	Low		
7	28	Hedgerow along 13th Line Property Edge, Numbered from West to East	<i>Acer saccharum</i>	Sugar Maple	0.35	14	top / leader dead, poor form	F - P	x		C, F	
	29		<i>Malus sp.</i>	Orchard Apple	5 @ 0.15	5 @ 6	multi-stem	F	x		C	
	30		<i>Fraxinus sp.</i>	Ash	0.40	16	older specimen, dieback	F - P	x		C, F	
	31		<i>Acer saccharum</i>	Sugar Maple	0.30	12		F	x		C	
	32		<i>Ulmus sp.</i>	Elm	0.35	14	poor form, overhanging branch	F - P	x		C, F	
	8		33	<i>Tilia americana</i>	Basswood	0.17-0.25	7-10	8 stem	F	x		C
			34	<i>Tilia americana</i>	Basswood	3 @ 0.17	3 @ 7	3 stem	F	x		C
			35	<i>Tilia americana</i>	Basswood	5 @ 0.25	5 @ 10		F	x		C
			36	<i>Tilia americana</i>	Basswood	4 @ 0.17	4 @ 7-9	4 stem	F	x		C
			37	<i>Crataegus sp.</i>	Hawthorn	0.25	10	old specimen	F - P		x	B, F
			38	<i>Tilia americana</i>	Basswood	0.1-0.12	4-5	younger smaller specimens	F	x		C
	9		39	<i>Tilia americana</i>	Basswood	0.17-0.22	7-9	6 stem, multi-stem typical	F	x		C
			40	<i>Tilia americana</i>	Basswood	0.17-0.22	7-9	4 stem	F	x		C
41		<i>Fraxinus sp.</i>	Ash	0.12	4 @ 5	multi-stem	G	x		C		
11	42	Young Growth Hedgerow	<i>Fraxinus sp.</i>	Ash	0.05-0.1	2-4m ht	scrub of young ash and hawthorn	F	x		C	
			<i>Crataegus sp.</i>	Hawthorn	0.05-0.1	2-4m ht	various sizes, fair form and health, typical	F - G	x		C	
	42B	Young Growth in Field	<i>Acer, Salix, Fraxinus</i>	Maple, Willow, Ash	0.05-0.2	2-4m ht	scrub and saplings	F - G	x		D	
10/11	43		<i>Ulmus sp.</i>	Elm	0.28	11		F	x		C	
10/11	44		<i>Crataegus sp.</i>	Hawthorn	0.17	7	with 7" elm tree	F	x		C	
10/11	45		<i>Fraxinus sp.</i>	Ash	0.22	9		F	x		C	
11/12	46		<i>Fraxinus sp.</i>	Ash	0.56	22	large specimen, maple sapling at base	F - G	x		C	
12/14	47		<i>Fraxinus sp.</i>	Ash	0.28	11	single stem	F - G	x		C	
	48		<i>Ulmus sp.</i>	Elm	3 @ 0.25	3 @ 10	multi-stem	F	x		C	
12/13	49		<i>Fraxinus sp.</i>	Ash	0.40	16		F - G	x		C	
	50		<i>Ulmus sp.</i>	Elm	0.15	6		P		x	B	
13/14	51		<i>Ulmus sp.</i>	Elm	2 @ 0.3	2 @ 12		F	x		C	
	52		<i>Malus sp.</i>	Apple	0.28	11	lower crown dieback	F - P	x		C, F	

**BIG BAY POINT
HEDGEROW AT 13TH LINE
WEST EDGE AT BIG BAY POINT ROAD INTERSECTION**

Plan Reference Dwg TA-1
Dated December 23, 2008

**TREE INVENTORY AND ASSESSMENT REPORT
Appendix 'A'**

Recommendation Categories

- A - Removal required due to conflict with proposed development and grading
 B - Removal recommended due to health and rate of species.
 C - Tree to be retained due to location outside limit of development / grading.
 D - Tree to be retained where proposed grading allows.
 E - Existing small trees and shrubs to be transplanted as directed.
 F - Tree recommended to be assessed and pruned by Arborist (on adjacent property, owner permission required)
 H - Hazard, dead or dying tree

Rating
 G = Good
 F = Fair
 P = Poor

Photo	Tree Number	Location Within Development Property	Species		Approx. Size (m dia) (inch)		Condition / Comments / Understorey	Rating	Potential For Preservation		Recommendations (see list)	
			Botanical Name	Common Name	D.B.H.*				High	Low		
14/15	53		<i>Acer saccharum</i>	Sugar Maple	0.355	14	prune horizontal branch if required	G	x		C	
	54		<i>Quercus sp.</i>	Oak	0.38	15		F - G	x		C	
	55		<i>Fraxinus sp.</i>	Ash	0.20	8		G	x		C	
	56		<i>Fraxinus sp.</i>	Ash	0.15	6		G	x		C	
16	57	Farm House Property Vegetation at Perimeter of Site	<i>Quercus sp.</i>	Oak	0.76	30	large caliper tree near fence	G	x		C	
	58		<i>Acer saccharum</i>	Sugar Maple	10 @ 0.17-0.3	10 @ 7-12	10 trees @ 7-12'	G	x		C	
	59		<i>Fraxinus sp.</i>	Ash				G	x		C	
	60		<i>Acer sp.</i>	Maple	0.3-0.45	12-18	large caliper tree near fence	G	x		C	
	16/18		61	<i>Acer sp.</i>	Maple	0.45-0.55	18-22	two large trees	G	x		C
			62	<i>Acer sp.</i>	Maple	0.600	±24	large caliper tree near fence	G	x		C
63		<i>Acer sp.</i>	Maple	0.60	±24	G	x			C		
18	64	Northwest Corner	<i>Acer & Ulmus</i>	Maple & Elm	12 @ 0.1-0.15	12 @ 4-6	12 trees closely spaced by fence	G	x		C	
	65	North Property Edge	<i>Acer sp.</i>	Maple	0.15	6	single large tree	G	x		C	
19	66	Farm House Property Vegetation at Perimeter of Site	<i>Acer & Ulmus</i>	Maple & Elm	0.2-0.25	3 @ 8-10	group of 3 trees by fence	G	x		C	
	67		<i>Acer sp.</i>	Maple	0.350	14	large caliper tree	G	x		C	
	68		<i>Acer, Ulmus, Fraxinus</i>	Maple, Elm, Ash	0.2-0.25	8-10	±6 trees, larger caliper	G	x		C	
	69		<i>Acer sp.</i>	Maple	0.22-0.15	9 & 6	2 trees	G	x		C	
	70		<i>Acer sp.</i>	Maple	0.35	±14	large caliper trees within site	G	x		C	
	71		<i>Acer sp.</i>	Maple	0.50	±20	large caliper trees, fair form	F - G	x		C	
	72		<i>Ulmus</i>	Elm	0.23-0.25	±9-10	3 trees	F	x		C	
	73		<i>Acer sp.</i>	Maple	aver. 0.15	aver. 6	young row of trees	G	x		C	
17	74	Central Site Near House	<i>Picea & Acer</i>	Spruce & Maple	0.25-0.3	10-12	two spruce and several maples	F - G	x		C	
	75		<i>Fraxinus sp.</i>	Ash	0.40	16		G	x		C	
17	76	Farm House Property Vegetation at Perimeter of Site	<i>Fraxinus (4), Acer (1)</i>	Ash (4), Maple (1)	0.25-0.3	10-12	5 trees, maple is fair to poor	F - G	x		C	
	77		<i>Acer saccharum</i>	Sugar Maple	0.50	20		F - G	x		C	
	78		<i>Acer saccharum</i>	Sugar Maple	0.45	18		F - G	x		C	
	79		<i>Populus sp.</i>	Carolina Poplar	0.55	22		F - G	x		C	
	80		<i>Acer & Fraxinus</i>	Maple & Ash	0.33	13-16	young maple and ash	G	x		C	

**BIG BAY POINT
HEDGEROW AT 13TH LINE
WEST EDGE AT BIG BAY POINT ROAD INTERSECTION**

Plan Reference Dwg TA-1
Dated December 23, 2008

**TREE INVENTORY AND ASSESSMENT REPORT
Appendix 'A'**

Recommendation Categories

- A - Removal required due to conflict with proposed development and grading
 B - Removal recommended due to health and rate of species.
 C - Tree to be retained due to location outside limit of development / grading.
 D - Tree to be retained where proposed grading allows.
 E - Existing small trees and shrubs to be transplanted as directed.
 F - Tree recommended to be assessed and pruned by Arborist (on adjacent property, owner permission required)
 H - Hazard, dead or dying tree

Rating
 G = Good
 F = Fair
 P = Poor

Photo	Tree Number	Location Within Development Property	Species		Approx. Size (m dia) (inch)		Condition / Comments / Understorey	Rating	Potential For Preservation		Recommendations (see list)
			Botanical Name	Common Name	D.B.H.*				High	Low	
	81	South Property Edge Farm Lot ↓	<i>Acer saccharum</i>	Sugar Maple	0.6	±24	large tree at driveway entry	F - G	x		C
	82		<i>Acer saccharum</i>	Sugar Maple	0.5-0.6	20-24	two trees - overmature	F, F - P	x		C, F
	83		<i>Fraxinus sp. (8)</i>	Ash (8)	0.22-0.25	9-10	8 @ 5-6m o/c, good form/health	G	x		C
	84		<i>Fraxinus sp.</i>	Ash	0.22	9	outside farm property	G	x		C
	85	Hedgerow at Southeast Site along 13th Line ↓	<i>Acer saccharum</i>	Sugar Maple	3 @ 0.15	3 @ 6	3 young maples at farm lot line	G	x		C, D
	86		<i>Malus sp.</i>	Crabapple	3 @ 0.14	3 @ 6	older specimen	G	x		C, D
	87		<i>Ulmus</i>	Elm	0.2-0.3	8-12	some dieback	F	x		C, D
	88		<i>Ulmus</i>	Elm	0.2-0.3	8-12		F	x		C, D
	89		<i>Ulmus</i>	Elm	0.2-0.3	8-12		F	x		C, D
	90		<i>Crataegus & Malus</i>	Hawthorn & Apple	0.1-0.3	4-8		±10 trees	F	x	
	91	Southeast Corner of Site on 13th Line ↓	<i>Fraxinus sp.</i>	Ash	10 @ 0.2	10 @ 8	large 10 stem tree	G	x		C, D
	92		<i>Crataegus & Fraxinus</i>	Hawthorn & Ash	0.15	±6	3 or 4 larger specimens	F	x		C, D
	93		<i>Malus sp.</i>	Apple	0.25-0.3	10-12	older orchard apple	F - P, P		x	B
	94		<i>Malus & Fraxinus</i>	Apple & Ash	0.15-0.2	6-8	property edge	F	x		C
	95	Adjacent Woodlot	<i>Variety of Species</i>	Maple, Ash, Hawthorn	±0.2-0.4 variety of sizes		dense healthy plantings	G	x		C

BIG BAY POINT ROAD, NORTH OF 13TH LINE AT FARMSTEAD AND GRAVEL PIT EDGE

Plan Reference Dwg TA-2
Dated January 9, 2009

TREE INVENTORY AND ASSESSMENT REPORT Appendix 'A'

Recommendation Categories

A - Removal required due to conflict with proposed development and grading
 B - Removal recommended due to health and rate of species.
 C - Tree to be retained due to location outside limit of development / grading.
 D - Tree to be retained where proposed grading allows.

E - Existing small trees and shrubs to be transplanted as directed.
 F - Tree recommended to be assessed and pruned by Arborist
 H - Hazard, dead or dying tree

Rating
 G = Good
 F = Fair
 P = Poor

Photo	Tree Number	Location Within Development Property	Species		Approx. Size (m dia) (inch)		Condition / Comments / Understorey	Rating	Potential For Preservation		Recommendations (see list)
			Botanical Name	Common Name	D.B.H.*				High	Low	
VEGETATIVE UNIT 1 AT FARMSTEAD											
1, 11	A1	Hedge on north property edge	<i>Thuja occidentalis</i>	White Cedar	±13 @ 0.25-0.35	±13 @ 10-14" aver	various sizes mostly good form & health	F - G	x		C
1, 11	A2	Nine pine in hedge	<i>Pinus strobus</i>	White Pine	0.40	16	good specimen in cedar hedge	G	x		C
2	B1	Row of 4 maples along laneway to house	<i>Acer saccharum</i>	Sugar Maple	0.6-0.7	24-30	overmature tree, trunk damage	P		x	B
	B2		<i>Acer saccharum</i>	Sugar Maple	±0.60	±24	↑ prune to improve form and remove deadwood ↓	F	x		C, F
	B3		<i>Acer saccharum</i>	Sugar Maple	±0.60	±24		F	x		C, F
	B4		<i>Acer saccharum</i>	Sugar Maple	±0.60	±24		F	x		C, F
3, 4	C1	R.O.W. frontage	<i>Acer saccharum</i>	Sugar Maple	±0.60	±24		F	x		C, F
	C2		<i>Acer saccharum</i>	Sugar Maple	±0.60	±24	with large dead tree adjacent tree C2	F	x		C, F
2	D	Younger cedar in frontage	<i>Thuja sp.</i>	Cedar var.	0.20-0.32	8-11 aver	thin out if recommended	F	x		C, F
5	E1	Single tree at north edge	<i>Acer sp.</i>	Maple var.	0.45	18	good form and health	F - G	x		C
	E2		<i>Acer sp.</i>	Maple var.	0.45	18	good form and health	F - G	x		C
	F	Younger cedar hedge	<i>Thuja sp.</i>	Cedar var.	4.5m ht	15 ft ht		F - G	x		C, D
6	G	Single tree at north edge	<i>Acer sp.</i>	Maple var.	0.40	16	good form and health	G	x		D
7	H	Isolated trees north of house	<i>Thuja sp.</i>	Cedar var.	4 @ 0.25	4 @ 10"	broad full form	F - G	x		D
8	I	South property edge	<i>Rhus typhina</i>	Sumac	4.5-5.5m ht	15-20ft ht	healthy grove of sumac	F - G	x		C, D
	J	Isolated tree	<i>Picea sp.</i>	Spruce var.	0.45	18	single large tree in sumac grove	F - G	x		C
13, 14, 15	VEGETATIVE UNIT 2 North of gravel pit entrance		<i>Rhus typhina</i>	Sumac	4.5-5.5m ht	15-20ft ht	low to tall growth on berm by entry road	F	x		A
			<i>Populus sp.</i>	Poplar var.	0.10-0.25	4-10	younger growth & a few larger trees	F - G	x		A
			<i>Fraxinus sp.</i>	Ash var.	0.10-0.25	4-10	younger growth & a few larger trees	F - G	x		A
17	VEGETATIVE UNIT 3 Between hydro pole #1 and #2 on road		<i>Fraxinus sp.</i>	Ash var.	0.10-0.25	4-10	predominant species in woodlot	F - G	x		C
			<i>Populus sp.</i>	Poplar var.	0.10-0.25	4-10	frequent species in woodlot	F - G	x		C
			<i>Acer sp.</i>	Maple var.	0.10-0.35	4-14	frequent species in woodlot	F - G	x		C
			<i>Malus & Crataegus</i>	Apple & Hawthorn	0.20-0.30	8-12	occasional larger apple and hawthorn	F, F - P	x		C
19	VEGETATIVE UNIT 4 Opposite pole #4, north of large pine		<i>Robinia sp.</i>	Black Locust	0.20-0.30	8-12	dominant species in unit	F - G	x		C
			<i>Acer sp.</i>	Maple var.	0.10-0.25	4-10	younger saplings and small trees	F - G	x		C
			<i>Populus sp.</i>	Poplar var.	0.10-0.25	4-10	younger saplings and small trees	F - G	x		C
20-22	VEGETATIVE UNITS 5 & 6 North property edge on slope		<i>Populus sp.</i>	Poplar var.	0.20-0.40	8-16	group larger poplar at north property edge	G	x		C
			<i>Acer sp.</i>	Maple var.	0.15-0.25	6-10	younger trees at road edge	F - G	x		C
			<i>Fraxinus sp.</i>	Ash var.	0.15-0.25	6-10	younger trees, some sumac	F - G	x		C
18	UNIT 7 - Isolated larger tree group		<i>Pinus strobus</i>	White Pine	0.35-0.50	13-20	3 large pine, good form	G	x		C
	UNIT 8 - Isolated larger tree group		<i>Salix sp.</i>	Willow var.	±0.60-0.70	±24-30	2 large willows, good form	F - G	x		C, D

BIG BAY POINT ROAD EAST / WEST R.O.W., NORHT LIMIT OF SITE

Plan Reference Dwg TA-3
Dated January 9, 2009

TREE INVENTORY AND ASSESSMENT REPORT Appendix 'A'

Recommendation Categories

- A - Removal required due to conflict with proposed development and grading
- B - Removal recommended due to health and rate of species.
- C - Tree to be retained due to location outside limit of development / grading, tree at R.O.W. or property line edge.
- D - Tree to be retained where proposed grading allows.
- E - Existing small trees and shrubs to be transplanted as directed.
- F - Tree recommended to be assessed and pruned by Arborist (on adjacent property, owner permission required)
- H - Hazard, dead or dying tree

Rating
G = Good
F = Fair
P = Poor

Photo	Tree Number	Location Within Development Property	Species		Approx. Size (m dia) (inch)		Condition / Comments / Understorey	Rating	Potential For Preservation		Recommendations (see list)
			Botanical Name	Common Name	D.B.H.*				High	Low	
	001	Road ↓	<i>Tsuga canadensis</i>	Hemlock	600		mature healthy specimens typical	G	x		C, D
	002		<i>Pinus strobus</i>	White Pine	800			G	x		C, D
	003		<i>Tsuga canadensis</i>	Hemlock	600			F	x		C, D
	004		<i>Pinus strobus</i>	White Pine	600			G	x		C, D
	005		<i>Acer saccharum</i>	Sugar Maple	600			G	x		C, D
	006		<i>Pinus strobus</i>	White Pine	500			G	x		C, D
	662	Stake 555 - starting point									
11	680	near Stake 550	<i>Fraxinus sp.</i>	Ash	0.27	11	spindly, young cedar & ash	F		x	C, D (typ.)
	682	near Stake 549	<i>Tilia americana</i>	Basswood	0.27	11	young basswood area	F - G	x		A, D
12	683		<i>Tilia americana</i>	Basswood	2 @ 0.30 & 0.35	2 @ 12 & 15		F	x		C, D
	684	near Stake 548	<i>Fraxinus sp.</i>	Ash	0.22	9		F - G		x	A
	685		<i>Quercus rubra</i>	Red Oak	0.22	9	few larger oak closer to road	F		x	A
14	687	near Stake 548	<i>Quercus rubra</i>	Red Oak	3 @ 0.25	3 @ 10	2 & 3 stem group of oak	F	x		C, D
15	690	near Stake 544	<i>Quercus rubra</i>	Red Oak	0.25	10	with young aspen, dense cedar	F - G	x		C, D
16	690		<i>Populus tremuloides</i>	Aspen	0.23	9	leaning	F	x		C, D
	692		<i>Fraxinus sp.</i>	Ash	0.25	10	young ash and dense cedar to road	F - G	x		C, D
18	693	near Stake 543	<i>Fraxinus sp.</i>	Ash	0.25	10	young ash and dense cedar to road	F - G	x		A
19	695		<i>Pinus strobus</i>	White Pine	0.22	9	lower branch dieback, several trees	F	x		C, D
20	697	near Stake 541	<i>Pinus strobus</i>	White Pine	0.45	18	young ash, cedar and pine, some old pines	F, F - G		x	A, D
21/22	699		<i>Pinus strobus</i>	White Pine	0.35	14	young hawthorn and apple beyond	F - G	x		C, D
23	706	near Stake 536	<i>Thuja occidentalis</i>	White Cedar	0.22	9	broad form	F - G		x	A
24	708		<i>Pinus strobus</i>	White Pine	0.37	15	young hawthorn, cedar and aspen by road	F - G		x	A
25	709		<i>Pinus strobus</i>	White Pine	0.60	24	young ash and white pine	G		x	A
27	718		<i>Fraxinus sp.</i>	Ash	0.35	14	2 old ash trees	F - G		x	A
	719		<i>Fraxinus sp.</i>	Ash	0.30	12		F - G		x	A
	720	Stake 532	<i>Fraxinus sp.</i>	Ash	0.30	12		G		x	A
28	722		<i>Populus sp.</i>	Poplar	0.40	16	dead hazard tree	P		x	B
30	723		<i>Populus sp.</i>	Poplar	0.25 & 0.45	10 & 18	2 stem	F - G	x		C, D
29	724	Stake 531	<i>Fraxinus sp.</i>	Ash or similar	0.90	36	huge tree at centreline of stake	F - G		x	A
31	725		<i>Fraxinus sp.</i>	Ash or similar	0.90	36	half dead	F - P		x	B, F
32	727	near Stake 530	<i>Quercus sp.</i>	Oak	0.90	36	old tree area, broad, may encroach in R.O.W.	F		x	A

BIG BAY POINT ROAD EAST / WEST R.O.W., NORHT LIMIT OF SITE

Plan Reference Dwg TA-3
Dated January 9, 2009

TREE INVENTORY AND ASSESSMENT REPORT Appendix 'A'

Recommendation Categories

- A - Removal required due to conflict with proposed development and grading
- B - Removal recommended due to health and rate of species.
- C - Tree to be retained due to location outside limit of development / grading, tree at R.O.W. or property line edge.
- D - Tree to be retained where proposed grading allows.
- E - Existing small trees and shrubs to be transplanted as directed.
- F - Tree recommended to be assessed and pruned by Arborist (on adjacent property, owner permission required)
- H - Hazard, dead or dying tree

Rating
G = Good
F = Fair
P = Poor

Photo	Tree Number	Location Within Development Property	Species		Approx. Size (m dia) (inch)		Condition / Comments / Understorey	Rating	Potential For Preservation		Recommendations (see list)
			Botanical Name	Common Name	D.B.H.*				High	Low	
33	728		<i>Quercus sp.</i>	Oak or similar	0.68	28	old stump, poor form, hazard	P		x	A
	729		<i>Quercus sp.</i>	Oak	0.45	18	adjacent large guy wire at pole	F		x	A, D
34	731	near Stake 529	<i>Quercus sp.</i>	Oak	0.35	14		F		x	A
35/36	732	near Stake 528	<i>Pinus strobus</i>	White Pine	0.15-0.25	6-10 aver	white pine forest starts here	F - G		x	C, D (typ.)
	733		<i>Pinus sylvestris</i>	Scots Pine	0.3	12	tall, spindly, only top growth	P		x	B
37	734-6	Group close to road	<i>Fraxinus sp.</i>	Ash	0.22-0.27	9-11		F - G	x		C
	738	near Stake 527	<i>Fraxinus sp.</i>	Ash var.	0.25	10	spindly poor due to lack of light	P		x	A
	739		<i>Pinus sylvestris</i>	Scots Pine	0.35	12	poor form	P		x	A
	741	near Stake 526	<i>Pinus sylvestris</i>	Scots Pine	0.27	11	poor form	P		x	A
38	742		<i>Fraxinus sp.</i>	Ash	0.45	18	large tree	F - G		x	A
	743		<i>Pinus sylvestris</i>	Scots Pine	0.25	10	poor form	P		x	A
	744		<i>Pinus sylvestris</i>	Scots Pine	0.30	12	top growth mainly	F - P		x	A
	745		<i>Pinus sylvestris</i>	Scots Pine	0.32	13	top growth mainly	F - P		x	A
	747	near Stake 525	<i>Pinus sylvestris</i>	Scots Pine	0.32	13	poor form	F - P		x	A
	748		<i>Pinus sylvestris</i>	Scots Pine	0.25	10	poor form	P		x	A
	755	near Stake 518	<i>Populus sp.</i>	Poplar var.	0.70	28	old specimen, overmature soon	F - P		x	A, D
40	756		<i>Fraxinus sp.</i>	Ash or equal	0.40	16	low crotch 2 stem	F		x	A, D
	757		<i>Fraxinus sp.</i>	Ash or equal	0.40	16	fair to poor form	F		x	A, D
	758	near Stake 517 (direction change)	<i>Pinus strobus</i>	White Pine	0.97	39	lower limbs dieback, prune to shape	F		x	A, D
41	760		<i>Pinus sylvestris</i>	Scots Pine	0.25	10		F		x	A, D
	761		<i>Pinus sylvestris</i>	Scots Pine	0.37	15		F		x	A, D
	762	near Stake 516	<i>Pinus strobus</i>	White Pine	0.25	10		F - G		x	A, D
	764		<i>Pinus sylvestris</i>	Scots Pine	0.40	16	outside R.O.W. line	F		x	A, D
	765		<i>Fraxinus sp.</i>	Ash or equal	0.32	14	lower dieback, fair to poor form, fair health	F - P		x	A, D
42	766		<i>Pinus strobus</i>	White Pine	0.50	20	2/3, fair form, good health	F - G		x	A, D
	767		<i>Pinus strobus</i>	White Pine	0.25	10	mainly top growth	F - P		x	A, D
	769	near Stake 515	<i>Pinus sylvestris</i>	Scots Pine	0.32	13		F		x	A, D
	771	near Stake 514	<i>Pinus sylvestris</i>	Scots Pine	0.32	14	inside R.O.W. line	F		x	A, D
43	772		<i>Pinus strobus</i>	White Pine	0.40	16	outside R.O.W. line, wind swept	F - G		x	A, D
	774	near Stake 513	<i>Quercus rubra</i>	Red Oak	0.25	10		F - G		x	A, D
	776	near Stake 512	<i>Quercus rubra</i>	Red Oak	0.27	11	inside R.O.W. line	F		x	A, D

BIG BAY POINT ROAD EAST / WEST R.O.W., NORHT LIMIT OF SITE

Plan Reference Dwg TA-3
Dated January 9, 2009

TREE INVENTORY AND ASSESSMENT REPORT Appendix 'A'

Recommendation Categories

- A - Removal required due to conflict with proposed development and grading
- B - Removal recommended due to health and rate of species.
- C - Tree to be retained due to location outside limit of development / grading, tree at R.O.W. or property line edge.
- D - Tree to be retained where proposed grading allows.
- E - Existing small trees and shrubs to be transplanted as directed.
- F - Tree recommended to be assessed and pruned by Arborist (on adjacent property, owner permission required)
- H - Hazard, dead or dying tree

Rating
G = Good
F = Fair
P = Poor

Photo	Tree Number	Location Within Development Property	Species		Approx. Size (m dia) (inch)		Condition / Comments / Understorey	Rating	Potential For Preservation		Recommendations (see list)
			Botanical Name	Common Name	D.B.H.*				High	Low	
44	779	near Stake 510	<i>Quercus rubra</i>	Red Oak	0.27	11	outside R.O.W. line	F		x	A, D
45	781	near Stake 509	<i>Pinus strobus</i>	White Pine	2 @ 0.50	2 @ 20	2 stem, large pines	F		x	A, D
46	782		<i>Pinus strobus</i>	White Pine	0.50	20	single stem	F		x	A, D
	783	Stake 508 west end of survey	--								

BIG BAY POINT EAST LIMIT OF SITE NEW ROAD ROW (N/S) AND EAST PROPERTY EDGE AT EXISTING RESIDENTIAL AREA

Plan Reference Dwg TA-4A
Dated January 9, 2009

TREE INVENTORY AND ASSESSMENT REPORT Appendix 'A'

Recommendation Categories

- A - Removal required due to conflict with proposed development and grading
- B - Removal recommended due to health and rate of species.
- C - Tree to be retained due to location outside limit of development / grading, tree at R.O.W. or property line edge.
- D - Tree to be retained where proposed grading allows.
- E - Existing small trees and shrubs to be transplanted as directed.
- F - Tree recommended to be assessed and pruned by Arborist (on adjacent property, owner permission required)
- H - Hazard, dead or dying tree

Rating
G = Good
F = Fair
P = Poor

Photo	Tree Number	Location Within Development Property	Species		Approx. Size (m dia) (inch)		Condition / Comments / Understorey	Rating	Potential For Preservation		Recommendations (see list)
			Botanical Name	Common Name	D.B.H.*				High	Low	
	790	Stake 556 - starting point									
51/52	796	near BH#15 stake	<i>Quercus rubra</i>	Red Oak	0.33	13		G	x		C
	797		<i>Acer saccharum</i>	Sugar Maple	0.33	13		G	x		C
53	798-800		<i>Tilia americana</i>	Basswood or equal	3 @ 0.27	3 @ 11	beyond R.O.W. line, 3 stem	F - G	x		C
54	801		<i>Tilia americana</i>	Basswood or equal	0.33	13		F	x		C
55	802		<i>Tilia americana</i>	Basswood or equal	0.45	18	dead hazard tree	P		x	C, H
56	803		<i>Fraxinus sp.</i>	Ash	0.27	11	with ash saplings	F - G	x		C
57	804		<i>Fraxinus sp.</i>	Ash	0.27	11		F	x		C
58	805	opposite Stake 559	<i>Populus sp.</i>	Poplar var.	0.35	14	with younger aspen, cedar and ash	P		x	B, H
59	806	Stake 560	<i>Quercus rubra</i>	Red Oak	0.30	12	with young birch, cedar, maple and pine	F - G	x		C
	807		<i>Quercus rubra</i>	Red Oak	0.50	20	large tree beyond	F - G	x		C
60	808		<i>Populus tremuloides</i>	Trembling Aspen	0.35	14	2 stem, with other larger aspen	F - G	x		C
	811		<i>Populus tremuloides</i>	Trembling Aspen	0.30	12	2 stem, with young ash	F - G	x		C
	814	opposite Stake 563	<i>Fraxinus, Populus, Thuja</i>	Young woodlot	0.50-1.50	2-6	opposite young ash, aspen, basswood & cedar	F - G	x		C
	815		<i>Populus tremuloides</i>	Trembling Aspen	0.30	12	2 stem	F	x		C
	816		<i>Populus tremuloides</i>	Trembling Aspen	0.25	10		G	x		C
	817		<i>Fraxinus sp.</i>	Ash var.	0.27	11	fair form, one side to be pruned	F - G	x		C, F
	818	beyond R.O.W. edge (reference)	<i>Populus tremuloides</i>	Trembling Aspen	0.50	20	with young aspen, cedar and basswood	G	x		C
62	820	near Stake 565	<i>Acer sp.</i>	Maple var.	0.25	10	with younger maple to 6", cedar	F - G	x		C
	821		<i>Tilia americana</i>	Basswood	0.25	10	2 stem with denser cedar	F - G	x		C
63	825		<i>Acer saccharinum</i>	Silver Maple	4 @ 0.40	4 @ 16	4 stem, young maple & ash beyond	F - G	x		C
64	828	opposite Stake 871	<i>Acer saccharinum</i>	Silver Maple	5 @ 0.20	5 @ 8	multistem	F	x		C
65	829		<i>Fraxinus sp.</i>	Ash var.	0.35	14	some other large ash in this area	F - G	x		C
66	830		<i>Populus tremuloides</i>	Trembling Aspen	0.27	11	with younger ash, aspen & cedar	F - G	x		C
67	831	younger age trees in woodlot	<i>Fraxinus, Populus, Thuja</i>	Ash, Aspen, Cedar	0.12	±5 aver.	at edge of denser cedar bush	F - G	x		D
	840-845	Stake 580-588	<i>Fraxinus, Populus, Thuja</i>	Ash, Aspen, Cedar	0.05-0.10	±2-4 aver.	young trees with alder & basswood, wet area	F		x	A
68	846	inside Lot 1	<i>Populus sp.</i>	Poplar var.	0.35	2 @ 14	large tree with young aspen & ash	F - G	x		C
	850	tree near rearlot line	<i>Fraxinus sp.</i>	Ash or equal	0.25-0.30	±10-12	with young aspen, cedar & ash	F	x		C, D
	851	big tree within private yard	<i>Fraxinus sp.</i>	Ash var.	0.40	16	in adjacent yard	F	x		C
	852	big tree outside fence line	<i>Fraxinus sp.</i>	Ash var.	0.56	22	at fence line	F		x	D, F
	854	large tree at fence line	<i>Fraxinus sp.</i>	Ash var.	0.60	24	at fence line	F		x	D, F

BIG BAY POINT EAST LIMIT OF SITE NEW ROAD ROW (N/S) AND EAST PROPERTY EDGE AT EXISTING RESIDENTIAL AREA

Plan Reference Dwg TA-4A
Dated January 9, 2009
Updated January 6, 2010

TREE INVENTORY AND ASSESSMENT REPORT Appendix 'A'

Recommendation Categories

- A - Removal required due to conflict with proposed development and grading
- B - Removal recommended due to health and rate of species.
- C - Tree to be retained due to location outside limit of development / grading, tree at R.O.W. or property line edge.
- D - Tree to be retained where proposed grading allows.
- E - Existing small trees and shrubs to be transplanted as directed.
- F - Tree recommended to be assessed and pruned by Arborist (on adjacent property, owner permission required)
- H - Hazard, dead or dying tree

Rating
G = Good
F = Fair
P = Poor

Photo	Tree Number	Location Within Development Property	Species		Approx. Size (m dia) (inch)		Condition / Comments / Understorey	Rating	Potential For Preservation		Recommendations (see list)
			Botanical Name	Common Name	D.B.H.*				High	Low	
	856	outside private property / on fence line	<i>Ulmus sp.</i>	Elm var.	0.38	15	in decline/dieback, young ash, maple on plan	F - P		x	F
69	857	Stake 594 (7m out from fence) on development site	<i>Fraxinus sp.</i>	Ash or equal	0.50	20	with buckthorn, elm, ash and aspen	F - G		x	A, D
	861		<i>Fraxinus sp.</i>	Ash var.	0.40	16	with young maple, aspen & buckthorn	F - G		x	C, D
70	862		<i>Ulmus sp.</i>	Elm var.	0.40	16	base of trunk issues	P		x	B
	863		<i>Ulmus sp.</i>	Elm var.	0.40	16	near old hazard aspen tree	F		x	C, D (F)
	864		<i>Thuja occidentalis</i>	Cedar	0.56	2 @ 22	multistem	F		x	C, D
71	864B		<i>Ulmus sp.</i>	Elm var.	0.25	±10 (TBC)	elm adjacent cedar (#864)	F		x	C, D
72	865	on development site	<i>Fraxinus sp.</i>	Ash var.	0.71	28		F		x	A, D
	866		<i>Fraxinus sp.</i>	Ash var.	0.50	±20	several large trees	F		x	A, D
73	867	↓	<i>Ulmus sp.</i>	Elm var.	0.56	22	2 stem	F - P		x	A, D
74	868	on private property	<i>Fraxinus sp.</i>	Ash var.	0.45	18	just off property edge, with cedar	P		x	C, F
	870	along fence line	<i>Fraxinus sp.</i>	Ash var.	0.20	8	1 stem, with other ash 5-10"	F		x	C, D
	871		<i>Fraxinus sp.</i>	Ash var.	0.30	2 @ 12	2 stem	F		x	D
75	872	↓	<i>Salix sp.</i>	Willow var.	0.35-0.6	14-24	1 stem	F		x	B
	873		<i>Salix sp.</i>	Willow var.	0.35-0.6	14-24	3 stem, with large silver maple in private	F - P		x	D, F
76	875	on development site	<i>Thuja, Fraxinus</i>	Cedar, Ash	0.35	±14	larger cedar & ash	F		x	A, D
77	876	on development site	<i>Salix sp.</i>	Crack Willow	0.60-0.76	2 @ 24-30	with multistem, 18" ash in private yard	F		x	D, F
78	877	property line stake	<i>Salix sp.</i>	Willow var.	0.40	±16	tree at lake edge	F	x		C, D
79	878		<i>Salix sp.</i>	Willow or equal	0.76	30	isolated tree	F		x	A

BIG BAY POINT SOUTH LIMIT OF SITE NEW ROAD ROW (E/W) AND SOUTH PROPERTY EDGE AT EXISTING RESIDENTIAL AREA

Plan Reference Dwg TA-4B
Dated March 5, 2009
Updated January 6, 2010

TREE INVENTORY AND ASSESSMENT REPORT Appendix 'A'

Recommendation Categories

- A - Removal required due to conflict with proposed development and grading
- B - Removal recommended due to health and rate of species.
- C - Tree to be retained due to location outside limit of development / grading.
- D - Tree to be retained where proposed grading allows.
- E - Existing small trees and shrubs to be transplanted as directed.
- F - Tree on adjacent property recommended to be removed or pruned by Arborist.
- H - Hazard, dead or dying tree

Rating
G = Good
F = Fair
P = Poor

Photo	Tree Number	Location Within Development Property	Species		Approx. Size		Condition / Comments / Understorey	Rating	Potential For Preservation		Recommendations (see list)	
			Botanical Name	Common Name	(m dia)	(inch)			High	Low		
	A-1	West edge of south limit ↓	<i>Populus tremuloides</i>	Trembling Aspen	< 100		fair to good, dense stand pioneer species	G - F		x	A	
			<i>Rhus typhina</i>	Staghorn Sumac							A	
			<i>Betula alleghaniensis</i>	Yellow Birch							A	
			<i>Populus grandidentata</i>	Bigtooth Aspen							A	
			<i>Salix pentandra</i>	Laurel Willow							A	
	A-2			<i>Rhus typhina</i>	Sumac	< 100		on berm, not suitable for transplantation	G - F		x	A
			<i>Sorbus aucuparia</i>	Mountain Ash			A					
			<i>Populus sp.</i>	Poplar var.			A					
	A-3		On adjacent lot ↓	<i>Salix pentandra</i>	Laurel Willow	400		multistem	G	x		C
	A-4			<i>Salix babylonica</i>	Weeping Willow	400			G	x		C
	A-5	<i>Populus grandidentata</i>		Bigtooth Aspen	300			G	x		C	
	A-6	West edge of south limit ↓	<i>Populus sp.</i>	Poplar var.	350		bent trunk	F		x	A	
	A-7		<i>Populus tremuloides</i>	Trembling Aspen	< 100		on berm	F - G		x	A	
			<i>Populus grandidentata</i>	Bigtooth Aspen							A	
			<i>Rhus typhina</i>	Sumac							A	
			<i>Salix sp.</i>	Willow var.							A	
			<i>Fraxinus pennsylvanica</i>	Green Ash							A	
	A-8			<i>Populus sp.</i>	Poplar var.	100		on fence line	G	x		C
	A-9			<i>Salix sp.</i>	Willow var.	50 - 100		on fence line	G	x		C, on berm
	A-10			<i>Salix sp.</i>	Willow var.	< 100		on fence line	G	x		C
	A-11			<i>Populus tremuloides</i>	Trembling Aspen	50 - 100		grouping, 1.2m from fence	G	x		C, on berm
	A-13			<i>Salix pentandra</i>	Laurel Willow	300	multi	multi with 1m of fence	G	x		C
	A-14			<i>Populus tremuloides</i>	Trembling Aspen	<100		17 stems - burnt out	F	x		C
	A-16			<i>Populus tremuloides</i>	Cottonwood	300		within 2.5m of fence line	G	x		C
	A-17		<i>Salix pentandra</i>	Laurel Willow	400	multi	within 3.0m of fence line	G	x		C	
	A-31	East edge of south limit ↓	<i>Thuja occidentalis</i>	Eastern White Cedar	5.5m ht			F		x	A	
	A-32		<i>Thuja occidentalis</i>	Eastern White Cedar	150		broken trunk	P		x	B	
	A-33		<i>Thuja occidentalis</i>	Eastern White Cedar	5m ht			G		x	B	
	A-34		<i>Thuja occidentalis</i>	Eastern White Cedar	5 - 6m ht	clump	3 trees	G		x	A	
	923	on property	<i>Fraxinus americana</i>	White Ash	300	3 stems	just inside fence line	G	x		C	

BIG BAY POINT SOUTH LIMIT OF SITE NEW ROAD ROW (E/W) AND SOUTH PROPERTY EDGE AT EXISTING RESIDENTIAL AREA

Plan Reference Dwg TA-4B
Dated March 5, 2009
Updated January 6, 2010

TREE INVENTORY AND ASSESSMENT REPORT Appendix 'A'

Recommendation Categories

- A - Removal required due to conflict with proposed development and grading
- B - Removal recommended due to health and rate of species.
- C - Tree to be retained due to location outside limit of development / grading.
- D - Tree to be retained where proposed grading allows.
- E - Existing small trees and shrubs to be transplanted as directed.
- F - Tree on adjacent property recommended to be removed or pruned by Arborist.
- H - Hazard, dead or dying tree

Rating
G = Good
F = Fair
P = Poor

Photo	Tree Number	Location Within Development Property	Species		Approx. Size		Condition / Comments / Understorey	Rating	Potential For Preservation		Recommendations (see list)
			Botanical Name	Common Name	(m dia)	(inch)			High	Low	
	A-36	East edge of south limit ↓	<i>Acer saccharum</i>	Sugar Maple	850		good - bend trunk	G	x		C
	A-37		<i>Fraxinus americana</i>	White Ash	125		at fence line	F	x		D
	A-38		<i>Fraxinus americana</i>	White Ash	300		at fence line	G	x		D
	A-39		<i>Tilia americana</i>	Basswood	clump 8m ht		at fence line	G	x		F
	912		<i>Fraxinus americana</i>	White Ash	400		on neighbour side	G	x		F
	909		<i>Thuja occidentalis</i>	Eastern White Cedar	600	2 stem	1m out, trunk split, at fence line	F	x		D, F
	A-43		<i>Populus tremuloides</i>	Trembling Aspen	225	4 stem clump		G	x		C
	A-44		<i>Fraxinus americana</i>	White Ash	175	6 stem clump		G	x		C
	A-48		<i>Thuja occidentalis</i>	Eastern White Cedar	225			F		x	A
	A-49		<i>Ulmus thomasii</i>	Rock Elm	to 150		scrub	F - G		x	D
			<i>Populus tremuloides</i>	Trembling Aspen	to 150		scrub	F - G		x	D
			<i>Fraxinus americana</i>	White Ash	to 150		scrub	F - G		x	D
	A-50		<i>Populus tremuloides</i>	Cottonwood	750		poor - crown dieback	P		x	B
	A-51		<i>Populus tremuloides</i>	Cottonwood	to 300	10 stem clump	some crown dieback	F		x	A, D
	A-52		<i>Acer saccharinum</i>	Silver Maple	100	3 stem clump	poor form	F		x	A, D
	A-53		<i>Betula papyrifera</i>	White Birch	2 x 2 stem	250		F		x	A, D
	A-54		<i>Betula papyrifera</i>	White Birch	2 stem	200				x	A, D
	A-55		<i>Tilia americana</i>	Basswood	multi	100.000		F		x	A, D
	A-56		<i>Fraxinus americana</i>	White Ash	multi	150.000		G		x	A, D
	A-57		<i>Fraxinus americana</i>	White Ash	group	6 stems, 100		F		x	A, D
	T-6	<i>Thuja occidentalis</i>	Eastern White Cedar	3.5m ht	1 unit	transplant	G	x		E	
	A-12/888	<i>Salix sp.</i>	Willow var.	225		1m from fence	G	x		C	
80	A15/889	at fence line	<i>Salix sp.</i>	Willow var.	0.22	9 (12)	12" tree within private yard	G	x		C
81	891	parkette plantings, Stake 891	<i>Picea, Pinus, Elaeagnus</i>	Spruce, Pine, R. Olive	3-5m ht	10-15ft ht	young trees within parkette	F - G	x		C
82	894		<i>Thuja</i>	Cedar	0.60	20	2 stem large cedar	F - G	x		C
	895		<i>Thuja</i>	Cedar	0.50	20	1 stem large cedar	F - G	x		C
83	896		<i>Populus sp.</i>	Poplar var.	0.33	13	3 stem	F - G		x	A
	897		<i>Fraxinus sp.</i>	Ash var.	0.20 / 0.35	8 / 13	2 stem	F - G		x	A
84	900	on private land, 1.5m off line	<i>Fraxinus sp.</i>	Ash or equal	0.30	2 @ 12	2 large trees within private yard	G	x		C
85	901		<i>Thuja</i>	Cedar	0.25	±10	good form	F - G	x		C, F
86	902	within development site	<i>Fraxinus sp.</i>	Ash var.	0.27	11	growing into chainlink fence	F	x		C, F
	903		<i>Fraxinus sp.</i>	Ash var.	0.27	11	with 10" crabapple in adjacent site	F	x		C
87	904	↓	<i>Betula papyrifera</i>	Birch	0.20-0.25	8-10	2 stem, 1m off fence line	F	x		C

BIG BAY POINT SOUTH LIMIT OF SITE NEW ROAD ROW (E/W) AND SOUTH PROPERTY EDGE AT EXISTING RESIDENTIAL AREA

Plan Reference Dwg TA-4B
Dated January 9, 2009

TREE INVENTORY AND ASSESSMENT REPORT Appendix 'A'

Recommendation Categories

- A - Removal required due to conflict with proposed development and grading
- B - Removal recommended due to health and rate of species.
- C - Tree to be retained due to location outside limit of development / grading, tree at R.O.W. or property line edge.
- D - Tree to be retained where proposed grading allows.
- E - Existing small trees and shrubs to be transplanted as directed.
- F - Tree recommended to be assessed and pruned by Arborist (on adjacent property, owner permission required)
- H - Hazard, dead or dying tree

Rating
G = Good
F = Fair
P = Poor

Photo	Tree Number	Location Within Development Property	Species		Approx. Size (m dia) (inch)		Condition / Comments / Understorey	Rating	Potential For Preservation		Recommendations (see list)
			Botanical Name	Common Name	D.B.H.*				High	Low	
88	905	on private lands	<i>Tilia americana</i>	Basswood	0.15	6	at fence within private yard	F - G	x		C
	906	on private lands, fence line	<i>Fraxinus sp.</i>	Ash var.	0.25	10	embedded in fence, recommend removal	F - P		x	B, F
	908	near Stake 247	<i>Acer sp.</i>	Maple	0.25	10	leader dead, poor form	P		x	A, B, F
	909	within 0.5 of fence / our side	<i>Thuja</i>	Cedar	0.35	2 @ 14	with cedar hedge on adjacent yard	G	x		A, D
	910		<i>Acer</i>	Maple	0.50	20	at fence line / private side - 2 stem	F - G	x		C
	911		<i>Acer sp.</i>	Maple	0.50	20	1m off fence line, several @ 6-8"	F - G	x		C
	912	within private property	<i>Fraxinus sp.</i>	Ash var.	0.50	20	2m off fence line, young basswood	F - G	x		C
90	913	2m inside private yard	<i>Acer saccharum</i>	Sugar Maple	0.60	24	good form & health	F - G	x		C
91	914	1m inside private yard	<i>Acer saccharum</i>	Sugar Maple	0.50	20	leader dieback, with 8" ash trees	F - P	x		C
92	915	2m inside private yard	<i>Fraxinus sp.</i>	Ash var.	0.25	±10	on fence line	F	x		C
93	916	1m inside private yard	<i>Tsuga canadensis</i>	Hemlock	0.35	14	sparse, leader dieback	F	x		C
94	917-919	1m inside private yard	<i>Tsuga canadensis</i>	Hemlock	0.25-0.30	40,098	3 trees near line, overhanging	F	x		C
95	920	at fence on development site	<i>Acer saccharum</i>	Sugar Maple	0.60	24	base of trunk issue, young cedar / pine	F	x		D
96	921	5m on development site	<i>Acer saccharum</i>	Sugar Maple	0.40	16	2 stem	F - G		x	A
97	922	at fence on development site	<i>Fraxinus sp.</i>	Ash var.	0.10	4 @ 4	with young ash trees	G	x		D
	923	1-2m on development site	<i>Fraxinus sp.</i>	Ash var.	0.20	±8		F - G		x	A
	924	2m inside private yard	<i>Acer saccharum</i>	Sugar Maple	0.50	20		G	x		C
98	925	1m inside private yard	<i>Tilia americana</i>	Basswood	0.25-0.38	3 @ 10-15	3 trees on private, 6" trees outside	F - G	x		C
	926	1.5m in development site	<i>Acer saccharum</i>	Sugar Maple	0.175	2 @ 7		G	x		D
	927	1.0m in development site	<i>Thuja</i>	Cedar	0.10-0.15	±4-6	multistem	F - G	x		D
99	928	2.0m inside private	<i>Acer saccharum</i>	Sugar Maple	0.25-0.30	±10-12		F - G	x		C
	929	0.5m on development site	<i>Fraxinus sp.</i>	Ash var.	0.50	20.00		F	x		C
	930	0.5m on development site	<i>Acer saccharum</i>	Sugar Maple	0.33	13		F	x		C
	931	0.5m on development site	<i>Acer saccharum</i>	Sugar Maple	0.20	8	0.5m within	F	x		D
	932	1.0m beyond on private	<i>Acer saccharum</i>	Sugar Maple	0.25	10		G	x		C
	933	0.5m beyond on private	<i>Fraxinus sp.</i>	Ash var.	0.60	24	large tree near rearlot line	G	x		C
100	934	on development site	<i>Thuja</i>	Cedar	0.15	10 @ 6	clump	F	x		D
101	935	on development site	<i>Thuja</i>	Cedar	0.25-0.50	10-20	clump	F	x		D
102	936	on development site	<i>Acer sp.</i>	Maple	0.33	13	2 stem	F	x		D
103	937	on private side at fence	<i>Betula papyrifera</i>	Birch	0.30	12		F - P	x		C
104	938	on private side at fence	<i>Thuja</i>	Cedar	0.25-0.38	10-15	clump form, beyond fence	F	x		C
105	939	3.0m beyond on private side	<i>Salix sp.</i>	Willow var.	0.5	+20		F	x		C

BIG BAY POINT NORTH GOLF COURSE EDGE AT GOLF HOLES 16-18

Plan Reference Dwg TA-5
Dated April 20, 2009

TREE INVENTORY AND ASSESSMENT REPORT Appendix 'A'

Recommendation Categories

A - Removal required due to conflict with proposed development and grading
B - Removal recommended due to health and rate of species.
C - Tree to be retained due to location outside limit of development / grading.

D - Tree to be retained where proposed grading allows.
E - Hazard, dead or dying tree
F - Tree recommended to be assessed or pruned by Arborist / Tree Specialist

Rating
G = Good
F = Fair
P = Poor

Photo	Tree Number	Location Within Development Property	Species		Approx. Size		Condition / Comments / Understorey	Rating	Potential For Preservation		Recommendations (see list)
			Botanical Name	Common Name	(m dia)	(inch)			High	Low	
011A	001		<i>Fagus</i>	Beech	0.406	16		F - G		x	A
012A	002		<i>Acer saccharum</i>	Sugar Maple	0.450	18		F - G		x	A
013A	003		<i>Acer saccharum</i>	Sugar Maple	0.406	16		F - G		x	A
013A	004		<i>Acer saccharum</i>	Sugar Maple	0.355	14		F - G		x	A
014A	005		<i>Acer saccharum</i>	Sugar Maple	0.406	16		F - G		x	A
015A	006		<i>Acer saccharum</i>	Sugar Maple	0.450	18		F - G		x	A
	007		<i>Ulmus</i>	Elm	0.355	14		F - G	x		C
016A	009		<i>Ulmus</i>	Elm	0.406	16		F - G		x	A
	011		<i>Ulmus</i>	Elm	0.406	16		F - G		x	A
017A	013		<i>Fagus</i>	Beech	0.355	14		F - G		x	A
018A	015		<i>Quercus</i>	Oak	0.450	18		F - G		x	A
018A	016		<i>Quercus</i>	Oak	0.450	18		F - G		x	A
018A	017		<i>Fraxinus</i>	Ash	0.406	16		F - G		x	A
019A	018		<i>Fraxinus</i>	Ash	0.355	14		F - G		x	A
	019		<i>Fraxinus</i>	Ash	0.355	14		F - G		x	A
020A	020		<i>Fagus</i>	Beech	0.450	18		F - G		x	A
020A	021		<i>Fagus</i>	Beech	0.450	18		F - G		x	A
021A	022		<i>Fagus</i>	Beech	0.355	14		F - G		x	A
021A	023		<i>Fagus</i>	Beech	0.355	14		F - G		x	A
022A	024	5m from Stake 392	<i>Fraxinus</i>	Ash	0.610	24		F - G		x	A
023A	026		<i>Fagus</i>	Beech	0.450	18		F - G		x	A
024A	027		<i>Fraxinus</i>	Ash	0.406	16		F - G		x	A
025A	028	at stk 489	<i>Quercus</i>	Oak	0.406	16		F - G		x	A
026A	029	5m from Stake 487	<i>Fraxinus</i>	Ash	0.450	18		F - G		x	A
027A	031		<i>Fraxinus</i>	Ash	0.330	13		F - G		x	A
028A	032		<i>Fraxinus</i>	Ash	0.355	14		F - G		x	A
029A	033		<i>Fraxinus</i>	Ash	0.355	14		F - G		x	A
031A	035		<i>Acer saccharum</i>	Sugar Maple	0.355	14	some dieback in canopy	P		x	A
032/3A	037		<i>Fagus</i>	Beech	0.406	16	damage at base	P		x	A
034A	038		<i>Juglans cinerea</i>	Butternut			for reference only	F - G		x	A
	040		<i>Fagus</i>	Beech	0.406	16	some damage at base	P		x	A
	041		<i>Juglans cinerea</i>	Butternut			for reference only	F - G		x	A
035A	043		<i>Populus</i>	Aspen	0.355	14		F - G		x	A
	044		<i>Juglans cinerea</i>	Butternut			for reference only	F - G		x	A
036A	045	22m from Stake 465	<i>Acer saccharum</i>	Sugar Maple	0.450	18	3 stem	F - G		x	A

BIG BAY POINT NORTH GOLF COURSE EDGE AT GOLF HOLES 16-18

Plan Reference Dwg TA-5
Dated April 20, 2009

TREE INVENTORY AND ASSESSMENT REPORT Appendix 'A'

Recommendation Categories

A - Removal required due to conflict with proposed development and grading
B - Removal recommended due to health and rate of species.
C - Tree to be retained due to location outside limit of development / grading.

D - Tree to be retained where proposed grading allows.
E - Hazard, dead or dying tree
F - Tree recommended to be assessed or pruned by Arborist / Tree Specialist

Rating
G = Good
F = Fair
P = Poor

Photo	Tree Number	Location Within Development Property	Species		Approx. Size (m dia) (inch)		Condition / Comments / Understorey	Rating	Potential For Preservation		Recommendations (see list)
			Botanical Name	Common Name	D.B.H.*				High	Low	
037A	047		<i>Fagus</i>	Beech	0.330	13		F - G		x	A
038A	048		<i>Quercus</i>	Oak	0.450	18		F - G		x	A
039A	049		<i>Quercus</i>	Oak	0.558	22	multi stem 2 stem	F - G		x	A
039A	051		<i>Populus</i>	Aspen	0.355	14		F - G		x	D
	052		<i>Populus</i>	Aspen	0.355	14		F - G		x	D
040A	053		<i>Quercus</i>	Oak	0.406	16		F - G		x	A
041A	055		<i>Quercus</i>	Oak	0.406	16		F - G		x	A
042A	056	5m west from Stake 446	<i>Acer saccharum</i>	Sugar Maple	0.406	16	2 stem	F - G		x	A
043A	058	8m west from Stake 446	<i>Tilia americana</i>	Basswood	0.406	16	2 stem	F - G		x	A
051A to 055A	060		<i>Populus</i>	Aspen	vary 0.355-0.45	vary 14-18	aspen grove	F - G	x		C, D
	061		<i>Populus</i>	Aspen	vary 0.355-0.45	vary 14-18		F - G	x		C, D
	062		<i>Populus</i>	Aspen	vary 0.355-0.45	vary 14-18		F - G	x		C, D
	063		<i>Populus</i>	Aspen	vary 0.355-0.45	vary 14-18		F - G	x		C, D
	064		<i>Populus</i>	Aspen	vary 0.355-0.45	vary 14-18		F - G	x		C, D
056A, 059A	065		<i>Populus</i>	Aspen	vary 0.355-0.45	vary 14-18	aspen grove	F - G	x		C, D
	066		<i>Populus</i>	Aspen	vary 0.355-0.45	vary 14-18		F - G	x		C, D
	067		<i>Populus</i>	Aspen	vary 0.355-0.45	vary 14-18		F - G	x		C, D
	068		<i>Populus</i>	Aspen	vary 0.355-0.45	vary 14-18		F - G	x		C, D
	069		<i>Populus</i>	Aspen	vary 0.355-0.45	vary 14-18		F - G	x		C, D
	070		<i>Populus</i>	Aspen	vary 0.355-0.45	vary 14-18		F - G	x		C, D
	071		<i>Populus</i>	Aspen	vary 0.355-0.45	vary 14-18		F - G	x		C, D
	072		<i>Populus</i>	Aspen	vary 0.355-0.45	vary 14-18		F - G	x		C, D
	073		<i>Populus</i>	Aspen	vary 0.355-0.45	vary 14-18		F - G	x		C, D
	074		<i>Populus</i>	Aspen	vary 0.355-0.45	vary 14-18		F - G	x		C, D
	075		<i>Populus</i>	Aspen	vary 0.355-0.45	vary 14-18		F - G	x		C, D
060A	076		<i>Populus</i>	Aspen	vary 0.355-0.45	vary 14-18		F - G	x		C, D
	077		<i>Populus</i>	Aspen	vary 0.355-0.45	vary 14-18	aspen grove	F - G	x		C, D
	078		<i>Populus</i>	Aspen	vary 0.355-0.45	vary 14-18		F - G	x		C, D
	079		<i>Populus</i>	Aspen	vary 0.355-0.45	vary 14-18		F - G	x		C, D
	080		<i>Populus</i>	Aspen	vary 0.355-0.45	vary 14-18		F - G	x		C, D
	081		<i>Populus</i>	Aspen	vary 0.355-0.45	vary 14-18		F - G	x		C, D
	082		<i>Populus</i>	Aspen	vary 0.355-0.45	vary 14-18		F - G	x		C, D
083		<i>Populus</i>	Aspen	vary 0.355-0.45	vary 14-18		F - G	x		C, D	
061A	085		<i>Acer saccharum</i>	Sugar Maple	0.450	18		F - G	x		C, D
062A	086		<i>Acer saccharum</i>	Sugar Maple	0.380	15		F - G		x	A

BIG BAY POINT NORTH GOLF COURSE EDGE AT GOLF HOLES 16-18

Plan Reference Dwg TA-5
Dated April 20, 2009

TREE INVENTORY AND ASSESSMENT REPORT Appendix 'A'

Recommendation Categories

A - Removal required due to conflict with proposed development and grading
 B - Removal recommended due to health and rate of species.
 C - Tree to be retained due to location outside limit of development / grading.

D - Tree to be retained where proposed grading allows.
 E - Hazard, dead or dying tree
 F - Tree recommended to be assessed or pruned by Arborist / Tree Specialist

Rating
 G = Good
 F = Fair
 P = Poor

Photo	Tree Number	Location Within Development Property	Species		Approx. Size		Condition / Comments / Understorey	Rating	Potential For Preservation		Recommendations (see list)
			Botanical Name	Common Name	(m dia)	(inch)			High	Low	
063A	088		<i>Fraxinus</i>	Ash	0.450	18		F - G	x		C, D
064A	089		<i>Quercus</i>	Oak	0.500	20		F - G	x		C, D
065A	091		<i>Quercus</i>	Oak	0.355	14		F - G	x		C, D
	092		<i>Quercus</i>	Oak				F - G		x	C, D
	093		<i>Quercus</i>	Oak				F - G		x	A
066A	095		<i>Quercus</i>	Oak	0.406	16		F - G		x	A
067A	096		<i>Fagus</i>	Beech	0.355	14	buttressing at base	P		x	A
068A	097		<i>Fraxinus</i>	Ash	0.450	18		F - G		x	A
069A	098		<i>Acer saccharum</i>	Sugar Maple	0.450	18		F - G		x	A
070A	100		<i>Populus</i>	Aspen	0.355	14		F - G		x	A, D
070A	101		<i>Populus</i>	Aspen	0.355	14		F - G		x	A
071A	103		<i>Tilia americana</i>	Basswood	0.450	18	2 stem	F - G		x	A
072A	104		<i>Tilia americana</i>	Basswood	0.450	18	2 stem	F - G		x	A
073A	105		<i>Quercus</i>	Oak	0.450	18	multi stemmed tree	F - G		x	A
074A	107		<i>Populus</i>	Aspen	0.355	14		F - G		x	A
075A	108		<i>Populus</i>	Aspen	0.355	14		F - G		x	A
076A	109		<i>Quercus</i>	Oak	0.450	18		F - G		x	A
076A	110		<i>Quercus</i>	Oak	0.450	18		F - G		x	A
077A	111		<i>Fraxinus</i>	Ash	0.406	16		F - G		x	A
078A							general photo of forest	F - G			
079A	113		<i>Quercus</i>	Oak	0.330	13		F - G	x		C, D
080A	115		<i>Quercus</i>	Oak	0.355	14		F - G		x	A
081A	117			Slippery Elm	0.450	18		F - G		x	A
082A	118		<i>Acer saccharum</i>	Sugar Maple	0.406	16		F - G		x	A
082A	119		<i>Acer saccharum</i>	Sugar Maple	0.406	16		F - G		x	A
083A	120		<i>Acer saccharum</i>	Sugar Maple	0.450	18		F - G	x		C
084A	122		<i>Quercus</i>	Oak	0.450	18		F - G	x		C
085A	123		<i>Quercus</i>	Oak	0.406	16		F - G	x		C
086A	126		<i>Quercus</i>	Oak	0.406	18	2 stem	F - G	x		C, F
087A	128	13m east from Stake 488	<i>Quercus</i>	Oak	0.406	16		F - G		x	A
088A	129	13m east from Stake 488	<i>Quercus</i>	Oak	0.406	16		F - G		x	A
089A	130		<i>Fraxinus</i>	Ash	0.406	16		F - G		x	A
090A	131	20m from Oaks at Points 128/9	<i>Fraxinus</i>	Ash	0.558	22		F - G	x		C, D
091A	133		<i>Acer saccharum</i>	Sugar Maple	0.406	16		F - G	x		C, D
092A	134		<i>Acer saccharum</i>	Sugar Maple	0.355	14		F - G	x		C, D

BIG BAY POINT NORTH GOLF COURSE EDGE AT GOLF HOLES 16-18

Plan Reference Dwg TA-5
Dated April 20, 2009

TREE INVENTORY AND ASSESSMENT REPORT Appendix 'A'

Recommendation Categories

A - Removal required due to conflict with proposed development and grading
 B - Removal recommended due to health and rate of species.
 C - Tree to be retained due to location outside limit of development / grading.

D - Tree to be retained where proposed grading allows.
 E - Hazard, dead or dying tree
 F - Tree recommended to be assessed or pruned by Arborist / Tree Specialist

Rating
 G = Good
 F = Fair
 P = Poor

Photo	Tree Number	Location Within Development Property	Species		Approx. Size (m dia) (inch)		Condition / Comments / Understorey	Rating	Potential For Preservation		Recommendations (see list)
			Botanical Name	Common Name	D.B.H.*				High	Low	
093A	136		<i>Fraxinus</i>	Ash	vary 0.355-0.45	vary 14-18	ash grove	F - G		x	A
	137		<i>Fraxinus</i>	Ash	vary 0.355-0.45	vary 14-18		F - G		x	A
	138		<i>Fraxinus</i>	Ash	vary 0.355-0.45	vary 14-18		F - G		x	A
	139		<i>Fraxinus</i>	Ash	vary 0.355-0.45	vary 14-18		F - G		x	A
094A	141		<i>Fraxinus</i>	Ash	0.380	15		F - G	x		C, D
095A	142		<i>Fagus</i>	Beech	0.450	18		F - G	x		C, D
096A	144		<i>Fagus</i>	Beech	0.450	18		F - G	x		C, D
097A	145		<i>Fraxinus</i>	Ash	0.710	28		F - G	x		C, D
098A	147		<i>Fagus</i>	Beech	0.406	16		F - G	x		C, D
099A	149		<i>Fraxinus</i>	Ash	0.406	16		F - G		x	A
	150		<i>Fraxinus</i>	Ash	0.450	18		F - G		x	A
	151		<i>Fraxinus</i>	Ash	0.355	14		F - G		x	A
	152		<i>Fraxinus</i>	Ash	0.355	14		F - G		x	A
100A	153		<i>Fraxinus</i>	Ash	0.355	14		F - G		x	A
100A	153		<i>Fraxinus</i>	Ash	0.355	14		F - G		x	A
101A	155		<i>Fagus</i>	Beech	0.406	16		F - G		x	A
101A	156		<i>Fagus</i>	Beech	0.406	16		F - G		x	A
102A	158	9m north of Stake 390	<i>Quercus</i>	Oak	0.380	15		F - G		x	A
103A	159		<i>Ulmus</i>	Elm	0.406	16		F - G		x	A
104A	161		<i>Fagus</i>	Beech	0.406	16		F - G		x	A
105A	162		<i>Quercus</i>	Oak	0.450	18		F - G		x	A
106A	164		<i>Fagus</i>	Beech	0.500	20		F - G		x	A
106A	165		<i>Fagus</i>	Beech	0.500	20		F - G		x	A
107A	167		<i>Fraxinus</i>	Ash	0.450	18		F - G		x	A
108A	168		<i>Fagus</i>	Beech	0.380	15		F - G		x	A
108A	169		<i>Pinus</i>	Pine	0.380	15		F - G		x	A
109A	170		<i>Ulmus</i>	Elm	0.406	16		F - G		x	A
110A	171		<i>Fagus</i>	Beech	0.380	15		F - G		x	A
111A	172	At Stake 385	<i>undetermined</i>	<i>undetermined</i>	<i>undetermined</i>	<i>undetermined</i>		F - G		x	A
112A	173		<i>Quercus</i>	Oak	0.380	15		F - G		x	A
113A	174		<i>Acer or Fagus</i>	Maple or Beech	0.30-0.40 aver.	12-16		F - G		x	A
114A	175		<i>Acer or Fagus</i>	Maple or Beech	0.30-0.40 aver.	12-16		F - G		x	A
115A	176		<i>Acer or Fagus</i>	Maple or Beech	0.30-0.40 aver.	12-16		F - G		x	A
115A	177		<i>Acer or Fagus</i>	Maple or Beech	0.30-0.40 aver.	12-16		F - G		x	A
116A	179		<i>Acer or Fagus</i>	Maple or Beech	0.30-0.40 aver.	12-16		F - G	x		C
116A	180		<i>Acer or Fagus</i>	Maple or Beech	0.30-0.40 aver.	12-16		F - G	x		C

BIG BAY POINT NORTH GOLF COURSE EDGE AT GOLF HOLES 16-18

Plan Reference Dwg TA-5
Dated April 20, 2009

TREE INVENTORY AND ASSESSMENT REPORT Appendix 'A'

Recommendation Categories

A - Removal required due to conflict with proposed development and grading
B - Removal recommended due to health and rate of species.
C - Tree to be retained due to location outside limit of development / grading.

D - Tree to be retained where proposed grading allows.
E - Hazard, dead or dying tree
F - Tree recommended to be assessed or pruned by Arborist / Tree Specialist

Rating
G = Good
F = Fair
P = Poor

Photo	Tree Number	Location Within Development Property	Species		Approx. Size (m dia) (inch)		Condition / Comments / Understorey	Rating	Potential For Preservation		Recommendations (see list)
			Botanical Name	Common Name	D.B.H.*				High	Low	
117	181		<i>Betula</i>	Birch	0.5	20		F - P		X	B
118A	183		<i>Acer or Fraxinus</i>	Maple or Ash	0.355-0.45 aver.	14-18		F - G	x		D
	184		<i>Acer or Fraxinus</i>	Maple or Ash	0.355-0.45 aver.	14-18		F - G	x		D
	185		<i>Acer or Fraxinus</i>	Maple or Ash	0.355-0.45 aver.	14-18		F - G	x		D
	186		<i>Acer or Fraxinus</i>	Maple or Ash	0.355-0.45 aver.	14-18		F - G		x	A
119A	187		<i>Acer or Fraxinus</i>	Maple or Ash	0.355-0.45 aver.	14-18	2 stem	F - G		x	A
120A	188		<i>Acer saccharum</i>	Sugar Maple	vary 0.355-0.45	vary 14-18		F - G		x	A
120A	189		<i>Acer saccharum</i>	Sugar Maple	vary 0.355-0.45	vary 14-18		F - G		x	A
120A	190		<i>Acer saccharum</i>	Sugar Maple	vary 0.355-0.45	vary 14-18		F - G		x	A
121A	191		<i>Quercus</i>	Oak	0.406	16		F - G		x	A
	192		<i>Quercus</i>	Oak	0.406	16		F - G		x	A
122A	193		<i>Quercus</i>	Oak	0.355	14		F - G		x	A
123A	194		<i>Quercus</i>	Oak	0.450	18		F - G		x	A
124A	195		<i>Populus</i>	Aspen	0.406	16		F - G		x	A
124A	196		<i>Populus</i>	Aspen	0.406	16		F - G		x	A
125A	197		<i>Populus</i>	Aspen	0.406	16		F - G		x	A
125A	198	Stake 374	<i>Fagus</i>	Beech	0.450	18		F - G	x		C, D
	202	Stake 372	<i>Populus</i>	Aspen	0.355	14		F - G		x	A
	203		<i>Populus</i>	Aspen	0.406	16		F - G		x	A
	204		<i>Populus</i>	Aspen	0.450	18		F - G		x	A
	205		<i>Populus</i>	Aspen	0.406	16		F - G		x	A
125A	206		<i>Populus</i>	Aspen	0.450	18		F - G		x	A
125A	207		<i>Populus</i>	Aspen	0.450	18		F - G		x	A
126A	209		<i>Acer saccharum</i>	Sugar Maple	vary 0.406-0.558	vary 16-22	sugar mp grove	F - G		x	A
	210	Stake 364	<i>Acer saccharum</i>	Sugar Maple	vary 0.406-0.558	vary 16-22		F - G		x	A
	211		<i>Acer saccharum</i>	Sugar Maple	vary 0.406-0.558	vary 16-22		F - G		x	A
	212		<i>Acer saccharum</i>	Sugar Maple	vary 0.406-0.558	vary 16-22		F - G		x	A
127A	213		<i>Acer saccharum or equal</i>	Sugar Maple	vary 0.406-0.558	vary 16-22		F - G		x	A
	214		<i>Acer saccharum or equal</i>	Sugar Maple	vary 0.406-0.558	vary 16-22		F - G	x		C, D
128A	215	Stake 258	<i>Acer saccharum or equal</i>	Sugar Maple	vary 0.406-0.558	vary 16-22	damaged/ tree has large gash in trunk	P		x	B, F
	218		<i>Acer saccharum or equal</i>	Sugar Maple	vary 0.406-0.558	vary 16-22		F - G	x		C, D

BIG BAY POINT NORTH GOLF COURSE EDGE AT GOLF HOLES 16-18

Plan Reference Dwg TA-5
Dated April 20, 2009

TREE INVENTORY AND ASSESSMENT REPORT Appendix 'A'

Recommendation Categories

A - Removal required due to conflict with proposed development and grading
B - Removal recommended due to health and rate of species.
C - Tree to be retained due to location outside limit of development / grading.

D - Tree to be retained where proposed grading allows.
E - Hazard, dead or dying tree
F - Tree recommended to be assessed or pruned by Arborist / Tree Specialist

Rating
G = Good
F = Fair
P = Poor

Photo	Tree Number	Location Within Development Property	Species		Approx. Size (m dia) (inch)		Condition / Comments / Understorey	Rating	Potential For Preservation		Recommendations (see list)
			Botanical Name	Common Name	D.B.H.*				High	Low	
2	202	Trees at Fairway Limit	<i>Populus sp.</i>	Poplar var.	0.406	16		F		x	A
3	203		<i>Populus sp.</i>	Poplar var.	0.355	14		F		x	A
4 / 5	204		<i>Acer saccharum</i>	Sugar Maple	0.300	2 @ 12	scattered sugar maples to 11" caliper	F - G		x	A
7	206		<i>Fraxinus sp.</i>	Ash var.	0.685	27	poor form, with young aspen, old birch	F - P		x	A
8	208		<i>Acer saccharum</i>	Sugar Maple	0.760	30	overmature, in decline	F - P		x	A
9	209		<i>Acer saccharum</i>	Sugar Maple	0.406	16	understorey of younger maples	F - G		x	A
11	211		<i>Populus tremuloides</i>	Aspen	0.500	20	large specimen	F - G		x	A
12	212		<i>Populus tremuloides</i>	Aspen	0.558	22	leaning, poor form	F		x	A
13	213		<i>Acer saccharum</i>	Sugar Maple	0.500	20	in wet bottom lands	F - G		x	A
14	214		<i>Populus tremuloides</i>	Aspen	0.450	18	with young aspen, old cherry in decline	F - G		x	A
15	215		<i>Acer saccharum</i>	Sugar Maple	0.300	12		G		x	A
17	216		<i>Populus tremuloides</i>	Aspen	0.280	2 @ 11	with young buckthorn, beech and birch	G		x	A
18	217		<i>Pinus strobus</i>	White Pine	0.610	24	with young ash to 8", buckthorn	G	x		C
20	220		<i>Populus tremuloides</i>	Aspen	0.355	2 @ 14	young trees, insect problem, young pine	G		x	A
21	221		<i>Fraxinus sp.</i>	Ash var.	0.300	2 @ 12	2 stem, v-crotch with 10: white pine	F		x	A
23	223		<i>Fraxinus sp.</i>	Ash var.	0.355	14	in decline	F - P		x	A
25	225	Stake 361 (by small creek)	<i>Acer, Fagus, Pinus, Ulmus</i>	Maple, Beech, Pine, Elm	0.15 - 0.25	6-10 aver.	younger trees mainly maple	G	x		A
26	226		<i>Acer saccharum</i>	Sugar Maple	0.500	20	multi-braided stem, fair form	F	x		A
	227	Stake 262	<i>Acer, Populus</i>	Maple, Poplar	0.15 - 0.25	6-10 aver.	young maple and poplar area	F - G		x	C
28	228		<i>Fagus grandifolia</i>	American Beech	0.15 - 0.25	6-10 aver.	damaged trunks, scald, spindly	F - P		x	B
	229	Stake 367	<i>Betula sp.</i>	White Birch	0.40 - 0.45	14-18 aver.	a few mature birch in area	F, F - P		x	B
30	230		<i>Betula sp.</i>	White Birch	0.406	14		F - G	x		C
31	231		<i>Quercus sp.</i>	Oak var.	0.500	2 @ 20	dieback with maple and aspen	F - P	x		C
32	232		<i>Fraxinus sp.</i>	Ash var.	0.406	16	with beech and aspen	F		x	A
33	233		<i>Fagus grandifolia</i>	American Beech	0.355	14	3 stem, dieback	F, F - P		x	A
35	235		<i>Ulmus sp.</i>	White Elm	0.450	18	cleared stem, some fungus, with young elm	F		x	A
36	236		<i>Fagus grandifolia</i>	American Beech	0.450	18	several trees in decline, with young beech	F, F - P		x	A
37	237		<i>Acer saccharum</i>	Sugar Maple	0.610	24	in decline, decay in stem	F - P		x	A
39	239		<i>Fagus grandifolia</i>	American Beech	0.450	18	with a few birch, aspen	F	x		C
	238	Stake 370	<i>Ulmus sp.</i>	White Elm	0.20 - 0.30	8 - 12	some dieback, grove of elm, multi stem	F		x	A
41	241		<i>Ulmus sp.</i>	White Elm	0.280	4 @ 11	some multistem, some single, gall / dieback	F, F - P		x	A
42	242		<i>Ulmus sp.</i>	White Elm	0.406	16		F		x	A
43	243		<i>Ulmus sp.</i>	White Elm	0.406	16	some clear stem and spindly trees	F		x	A
44	244		<i>Ulmus sp.</i>	White Elm	0.406	2 @ 16	dieback, spindly	F	x		C, F
45	245 / 247		<i>Ulmus sp.</i>	White Elm	0.406	16	dieback	F - P	x		C, F
45	246		<i>Pinus strobus</i>	White Pine	0.450	18		F	x		C, D

BIG BAY POINT NORTH GOLF COURSE EDGE AT GOLF HOLES 16-18

Plan Reference Dwg TA-5
Dated April 20, 2009

TREE INVENTORY AND ASSESSMENT REPORT Appendix 'A'

Recommendation Categories

A - Removal required due to conflict with proposed development and grading
B - Removal recommended due to health and rate of species.
C - Tree to be retained due to location outside limit of development / grading.

D - Tree to be retained where proposed grading allows.
E - Hazard, dead or dying tree
F - Tree recommended to be assessed or pruned by Arborist / Tree Specialist

Rating
G = Good
F = Fair
P = Poor

Photo	Tree Number	Location Within Development Property	Species		Approx. Size (m dia) (inch)		Condition / Comments / Understorey	Rating	Potential For Preservation		Recommendations (see list)
			Botanical Name	Common Name	D.B.H.*				High	Low	
46	248		<i>Quercus sp.</i>	Oak var.	0.450	18	some lower dieback	F	x		C
47	249	3m off Stake 377	<i>Quercus sp.</i>	Oak var.	0.500	20	dieback spindly	F, F - P		x	A
50	252		<i>Ulmus sp.</i>	White Elm	0.450	18	fungus present with excellent beech/birch grove	F - P, P		x	A
52	254		<i>Ulmus sp.</i>	White Elm	0.710	28	overmature	F - G	x		C
53	255		<i>Ulmus sp.</i>	White Elm	0.450	18	dieback, split trunk, poor form	F - P	x		C
54	256		<i>Ulmus sp.</i>	White Elm	0.500	20	dieback	F	x		C
55	257		<i>Fagus grandifolia</i>	American Beech	0.610	24	dieback, with ash and young beech / birch	F - P	x		C
56	258		<i>Quercus sp.</i>	Oak var.	0.25 - 0.45	2 @ 10 & 18	dieback, with young beech / birch	F		x	A
57	259		<i>Pinus strobus</i>	White Pine	0.500	20	2 stem, v-crotch @ 4m level	F - G	x		C
59	261		<i>Fagus grandifolia</i>	American Beech	0.406	16	with younger beech and birch	G	x		C, D
60 / 61	262		<i>Ulmus sp.</i>	White Elm	0.300	12		F - G		x	A
62	263		<i>Betula sp.</i>	White Birch	0.300	12		F - G		x	A
64	265		<i>Ulmus sp.</i>	White Elm	0.450	18	base stem issues	F		x	A
65	266		<i>Fagus grandifolia</i>	American Beech	0.406	14		G		x	A
66	267		<i>Fagus grandifolia</i>	American Beech	0.406	14	some dieback, F - P form	F	x		C, F
68	269-273		<i>Fagus grandifolia</i>	American Beech	0.3 - 0.38	±12 - 15	beech grove	G		x	A
69	274		<i>Fagus grandifolia</i>	American Beech	0.406	14	spindly	F		x	A
71	276		<i>Fraxinus sp.</i>	Ash var.	0.500	20	cleared stem, fair form	F		x	A
72	277		<i>Fagus grandifolia</i>	American Beech	0.406	14		F - G	x		C, D
75	280		<i>Quercus sp.</i>	Oak var.	0.330	13		G		x	A
	281	Stake 424	<i>Populus, Betula</i>	Aspen, Birch	0.2 - 0.3	±8 - 12	young trees to 12", some decay, few birch	F - G		x	A
	282	Last Stake 423	<i>Fagus, Acer, Ulmus, Fraxinus</i>	Beech, Maple, Elm	0.300	±12	lots of 12" trees, beech, maple, elm, ash	F - G		x	A
	283	Stake 422	<i>Fagus, Acer, Ulmus, Fraxinus</i>	Beech, Maple, Elm	0.15 - 0.30	6 - 12	6 - 10 o/c, 12-14" trees	G		x	A
78 / 79	286		<i>Fagus grandifolia</i>	American Beech	0.406	16	general photo toward houses	G		x	A
	287		<i>Betula sp.</i>	White Birch	0.406	16	overmature, in decline	F, F - P		x	A
	289-293	Stake 417	<i>Acer, Fagus, Fraxinus</i>	Maple, Beech, Ash	0.15 - 0.40	6 - 14	maple grove, young beech	F - G		x	A
80	294		<i>Populus sp.</i>	Aspen	0.406	16		G		x	A
80	295		<i>Acer saccharum</i>	Sugar Maple	0.406	16		G		x	A
81	297		<i>Fraxinus sp.</i>	Ash var.	0.500	20	with mature beech and elm / beech fungus noted	G		x	A
81	298		<i>Fraxinus sp.</i>	Ash var.	0.450	18		F - G		x	A
81	299		<i>Fraxinus sp.</i>	Ash var.	0.450	18		G		x	A
82	301		<i>Acer saccharum</i>	Sugar Maple	0.450	18		F - G		x	A
82	302		<i>Acer saccharum</i>	Sugar Maple	0.450	18		F - G		x	A
83	303		<i>Acer saccharum</i>	Sugar Maple	0.500	20		G		x	A
83	305		<i>Fagus</i>	Beech	0.350	14		G		x	A

BIG BAY POINT NORTH GOLF COURSE EDGE AT GOLF HOLES 16-18

Plan Reference Dwg TA-5
Dated April 20, 2009

TREE INVENTORY AND ASSESSMENT REPORT Appendix 'A'

Recommendation Categories

A - Removal required due to conflict with proposed development and grading
B - Removal recommended due to health and rate of species.
C - Tree to be retained due to location outside limit of development / grading.

D - Tree to be retained where proposed grading allows.
E - Hazard, dead or dying tree
F - Tree recommended to be assessed or pruned by Arborist / Tree Specialist

Rating
G = Good
F = Fair
P = Poor

Photo	Tree Number	Location Within Development Property	Species		Approx. Size (m dia) (inch)		Condition / Comments / Understorey	Rating	Potential For Preservation		Recommendations (see list)
			Botanical Name	Common Name	D.B.H.*				High	Low	
84	306		<i>Acer saccharum</i>	Sugar Maple	0.350	14		F - G	x		C
	307		<i>Acer saccharum</i>	Sugar Maple	0.406	16		G		x	A
	308	Stake 409	<i>Betula, Populus</i>	Birch, Aspen	0.300	12	old dead birch, large aspen	F - P		x	E
85	309		<i>Fagus</i>	Beech	0.406	14	some trunk damage	F	x		C
	311		<i>Fraxinus sp.</i>	Ash var.	0.280	11		F	x		C
	313		<i>Acer saccharum</i>	Sugar Maple	0.350	14		F - G	x		C
86	314		<i>Acer saccharum</i>	Sugar Maple	0.450	18		G	x		C
	315		<i>Acer saccharum</i>	Sugar Maple	0.350	14		F - G		x	A
	318		<i>Acer saccharum</i>	Sugar Maple	0.406	16		F - G		x	A
87	319/320		<i>Acer saccharum</i>	Sugar Maple	0.450	18		G	x		C, D
	321		<i>Fagus</i>	Beech	0.280	11		F - G		x	A
	322		<i>Fraxinus sp.</i>	Ash var.	0.450	18		G		x	A
88	324		<i>Ulmus sp.</i>	White Elm	0.406	16		F - G	x		C
89	325		<i>Fagus</i>	Beech	0.300	12		F		x	A
90	327		<i>Quercus sp.</i>	Oak var.	0.500	20	base issues	F - G		x	A
91	330		<i>Acer saccharum</i>	Sugar Maple	0.38 - 0.5	15 - 20	lower dieback, with silver maple	F - P		x	A
	332		<i>Acer saccharum</i>	Sugar Maple	0.406	16		G		x	A
92	333		<i>Acer saccharinum</i>	Silver Maple	0.380	15		G	x		C
92	334		<i>Fagus</i>	Beech	0.450	18		G	x		C
	336	Stake 507	<i>Fagus</i>	Beech	0.300	12	dead	P		x	E
93	337		<i>Acer saccharinum</i>	Silver Maple	0.406	16	with spruce hedgerow at lot edge	G	x		C
94	338		<i>Fagus</i>	Beech	0.450	18		G	x		C
95	340		<i>Acer saccharinum</i>	Silver Maple	0.558	22	with 11" ash	F - G	x		C
96	343		<i>Ulmus sp.</i>	White Elm	0.355	14		F	x		C
96	344		<i>Fagus</i>	Beech	0.500	20	some dieback	F	x		C
96	345		<i>Fagus</i>	Beech	0.330	13		F	x		C
	346		<i>Fagus, Ulmus</i>	Beech, Elm	0.25 - 0.3	10 - 14	elm with multi-stem beech	F - G	x		C
	348		<i>Fagus</i>	Beech	0.330	13	with good beech grove area	F - G	x		C
	349		<i>Fagus</i>	Beech	0.660	26	stem, some trunk issues	F	x		C
	350		<i>Fagus</i>	Beech	0.450	18	some base stem rot, 2 stem	F	x		C
	351		<i>Fagus</i>	Beech	0.450	18	edge of lot near fence, good form	G	x		C
	352 353		<i>Fagus</i>	Beech	0.4 - 0.45	16 - 18		F - G	x		C
	355		<i>Fagus</i>	Beech	0.500	20	multi-stem, some dieback	F	x		C
	356 / 357		<i>Fagus</i>	Beech	2 @ 0.30	2 @ 12	2 stem	F - G	x		C
	359		<i>Acer saccharum</i>	Sugar Maple	0.300	12	location at fence line	G	x		C

BIG BAY POINT NORTH GOLF COURSE EDGE AT GOLF HOLES 16-18

Plan Reference Dwg TA-5
Dated April 20, 2009

TREE INVENTORY AND ASSESSMENT REPORT Appendix 'A'

Recommendation Categories

A - Removal required due to conflict with proposed development and grading
B - Removal recommended due to health and rate of species.
C - Tree to be retained due to location outside limit of development / grading.

D - Tree to be retained where proposed grading allows.
E - Hazard, dead or dying tree
F - Tree recommended to be assessed or pruned by Arborist / Tree Specialist

Rating
G = Good
F = Fair
P = Poor

Photo	Tree Number	Location Within Development Property	Species		Approx. Size		Condition / Comments / Understorey	Rating	Potential For Preservation		Recommendations (see list)
			Botanical Name	Common Name	(m dia)	(inch)			High	Low	
	360		<i>Fagus</i>	Beech	0.450	18	location at fence line, dieback	F - P	x		C
	361		<i>Fagus</i>	Beech	0.300	12		F	x		C
	362		<i>Ulmus sp.</i>	White Elm	0.300	12		F	x		C
	365		<i>Fagus</i>	Beech	0.355	14	base trunk issues	F - P	x		C
	366		<i>Betula</i>	Birch	0.355	14	in decline, older tree	F - P	x		C
	368		<i>Fagus</i>	Beech	0.406	16	generally maple area to 12" / young beech	F	x		C
	370		<i>Quercus sp.</i>	Oak var.	0.300	12		F - G	x		C
	373		<i>Quercus sp.</i>	Oak var.	0.300	12	some splitting in trunk	F	x		C
	374	Stake 479	<i>Quercus sp.</i>	Oak var.	2 @ 0.3	2 @ 12		F - G	x		C
	375		<i>Fraxinus sp.</i>	Ash var.	0.300	12		P	x		C
	376		<i>Fraxinus sp.</i>	Ash var.	0.355	14		F	x		C
	378 / 379	Tagged/ribboned tree by others	<i>Juglans cinerea</i>	Butternut	0.406 - 0.45	16 - 18	assessed by others / reference only	F - P	x		F
	380		<i>Quercus sp.</i>	Oak var.	0.406	16		F - G	x		C, D
	382	Wet area	<i>Fraxinus sp.</i>	Ash var.	0.280	11	typical size and species along this section	F	x		C, D
	384	Stake 470 / wet area	<i>Populus, Fraxinus, Acer</i>	Poplar, Ash, Maple	0.200	5 @ ±8	typical young trees, some decay	F, F - P		x	A
	386 / 387		<i>Populus sp.</i>	Aspen	0.3 - 0.406	16	in decline, wet zone / some decay	F, F - P		x	B
	390		<i>Populus sp.</i>	Aspen	0.406	16		F - P		x	B
	391	Tagged/ribboned tree by others	<i>Juglans cinerea</i>	Butternut	0.500	20	(tag B-37) for reference only	P		x	F
	393		<i>Fraxinus sp.</i>	Ash var.	0.300	12	leaning form	F, F - P		x	B
	396		<i>Quercus sp.</i>	Oak var.	0.450	18		F	x		C
	397		<i>Quercus sp.</i>	Oak var.	0.450	18		F	x		C
	399		<i>Acer saccharum</i>	Sugar Maple	0.300	12		F - P	x		C
	400		<i>Acer saccharum</i>	Sugar Maple	0.450	18		F - G	x		C
	402		<i>Populus sp.</i>	Aspen	0.3 - 0.45	12 - 18	average 14" size with older aspen	F, F - P	x		C
	404		<i>Populus sp.</i>	Aspen	0.355	14	with many other aspen & Young aspen	G	x		C
	405		<i>Acer saccharum</i>	Sugar Maple	0.660	26	old tree in decline, rot in base	P		x	A
	406		<i>Acer saccharum</i>	Sugar Maple	0.660	26	old tree in decline with old aspen tree	P		x	A
	407		<i>Betula</i>	Birch	0.558	22	old tree in decline	P		x	A
	408	Stake 447	<i>Populus, Fagus</i>	Aspen, Beech	0.200	< 8	young aspen and beech area	F, F - G		x	A
	409	Stake 440 / 438	<i>Malus, Crataegus</i>	Apple, Hawthorn	0.2 - 0.4	8 - 14	dead dying apple, hawthorn	P		x	A
	413		<i>Acer saccharum</i>	Sugar Maple	0.558	22		F - G		x	A
	416	Stake 451	<i>Fraxinus sp.</i>	Ash var.	0.406	16	with many other ash trees	F - G		x	A
	417	Stake 457	<i>Betula</i>	Birch	0.300	12	leaning	F - P		x	A
	419		<i>Populus sp.</i>	Aspen	0.300	12		F		x	A
	420	Stake 458	<i>Fraxinus sp.</i>	Ash var.	0.406	16		F - G		x	A, D

BIG BAY POINT NORTH GOLF COURSE EDGE AT GOLF HOLES 16-18

Plan Reference Dwg TA-5
Dated April 20, 2009

TREE INVENTORY AND ASSESSMENT REPORT Appendix 'A'

Recommendation Categories

A - Removal required due to conflict with proposed development and grading
B - Removal recommended due to health and rate of species.
C - Tree to be retained due to location outside limit of development / grading.

D - Tree to be retained where proposed grading allows.
E - Hazard, dead or dying tree
F - Tree recommended to be assessed or pruned by Arborist / Tree Specialist

Rating
G = Good
F = Fair
P = Poor

Photo	Tree Number	Location Within Development Property	Species		Approx. Size (m dia) (inch)		Condition / Comments / Understorey	Rating	Potential For Preservation		Recommendations (see list)
			Botanical Name	Common Name	D.B.H.*				High	Low	
	421		<i>Betula</i>	Birch	0.280	11		F - G	x		A, D
	422		<i>Acer saccharum</i>	Sugar Maple	0.355	14	gall damage, with young aspen/ash	F - P	x		A, D
	424	Tagged/ribboned tree by others	<i>Juglans cinerea</i>	Butternut	0.380	15	tree for reference only	F - P		x	A
	425		<i>Acer saccharum</i>	Sugar Maple	0.330	13		F		x	A
	426	Tagged tree by others	<i>Juglans cinerea</i>	Butternut	0.406	16	dieback, tree for reference only	F - P		x	A
	427		<i>Acer saccharum</i>	Sugar Maple	0.300	12		F		x	A
	429 - 430		<i>Quercus sp.</i>	Oak var.	0.3 - 0.45	12 - 18		F - G		x	A
	431		<i>Quercus sp.</i>	Oak var.	0.35 - 0.45	14 - 18	some lower dieback	F - G		x	A
	432		<i>Quercus sp.</i>	Oak var.	0.450	18		F		x	A
	433	3m off Stake 489	<i>Fagus</i>	Beech	0.500	20		F		x	A
	435		<i>Fraxinus sp.</i>	Ash var.	0.500	18	spindly form, leaning	F		x	A
	436		<i>Acer saccharum</i>	Sugar Maple	0.406	16	with 11" tree adjacent	G		x	A
	437		<i>Acer saccharum</i>	Sugar Maple	0.300	12		F - G		x	A
	439	3m off Stake 393	<i>Fagus</i>	Beech	0.4 - 0.43	16 - 17	3 trees at stake	F		x	A
	440	Near Stake 394	<i>Fagus</i>	Beech	0.300	12	several 12" trees	F		x	A
	442	Stake 395	<i>Acer saccharum</i>	Sugar Maple	0.405	14	with young beech	F		x	A
	443		<i>Fraxinus sp.</i>	Ash var.	0.405	14		F		x	A
	445		<i>Quercus sp.</i>	Oak var.	0.450	18		F	x		C, D
	446		<i>Quercus sp.</i>	Oak var.	0.450	18		F - G	x		C, D
	448		<i>Fagus</i>	Beech	0.405	14		F - G		x	A
	449		<i>Quercus sp.</i>	Oak var.	0.450	18	some lower dieback	F		x	A
	451		<i>Fagus</i>	Beech	0.406	16		F - G		x	A
	452 - 453		<i>Fagus</i>	Beech	0.406	16	2 stem	F - G		x	A
	455		<i>Fagus</i>	Beech	0.406	16		F		x	A
	456		<i>Quercus sp.</i>	Oak var.	0.450	18		F		x	A
	458		<i>Acer saccharum</i>	Sugar Maple	0.500	20		F - G		x	A
	460		<i>Fagus</i>	Beech	0.300	12	with other younger beech	G	x		C, D
	462	Stake 383	<i>Acer saccharum</i>	Sugar Maple	0.406	16		F - G	x		C, D
	463		<i>Acer saccharum</i>	Sugar Maple	0.406	16		F - G		x	A
	465		<i>Fagus</i>	Beech	0.406	16		F	x		C, D
	466		<i>Fagus</i>	Beech	0.330	26		F	x		C, D
	467		<i>Fagus</i>	Beech	3 @ 0.405	3 @ 14		F	x		C, D
	468		<i>Fagus</i>	Beech	0.405	14		F	x		C, D
	470	Near Stake 381	<i>Acer saccharum</i>	Sugar Maple	0.406	16		F	x		C, D
	471		<i>Acer saccharum</i>	Sugar Maple	0.350	14		F	x		C, D

BIG BAY POINT NORTH GOLF COURSE EDGE AT GOLF HOLES 16-18

Plan Reference Dwg TA-5
Dated April 20, 2009

TREE INVENTORY AND ASSESSMENT REPORT Appendix 'A'

Recommendation Categories

A - Removal required due to conflict with proposed development and grading
 B - Removal recommended due to health and rate of species.
 C - Tree to be retained due to location outside limit of development / grading.

D - Tree to be retained where proposed grading allows.
 E - Hazard, dead or dying tree
 F - Tree recommended to be assessed or pruned by Arborist / Tree Specialist

Rating
 G = Good
 F = Fair
 P = Poor

Photo	Tree Number	Location Within Development Property	Species		Approx. Size (m dia) (inch)		Condition / Comments / Understorey	Rating	Potential For Preservation		Recommendations (see list)
			Botanical Name	Common Name	D.B.H.*				High	Low	
	472	Stake 380 by others	<i>Juglans cinerea</i>	Butternut	0.406	16	for reference only	F	x		F
	473		<i>Acer saccharum</i>	Sugar Maple	0.406	16		F	x		C, D
	475		<i>Acer saccharum</i>	Sugar Maple	0.406	16		P		x	A, D
	477		<i>Acer saccharum</i>	Sugar Maple	0.450	18		F		x	A, D
	478		<i>Acer saccharum</i>	Sugar Maple	0.450	18		F		x	A, D
	479		<i>Acer saccharum</i>	Sugar Maple	0.300	12		F		x	A, D
	481		<i>Populus sp.</i>	Aspen	0.300	12		F - G		x	A, D
	482		<i>Acer saccharum</i>	Sugar Maple	0.660	26		P		x	A, D
	484	Stake 364	<i>Acer saccharum</i>	Sugar Maple	0.406	16		F		x	A, D
	485		<i>Acer saccharum</i>	Sugar Maple	0.710	28	rot in stem	P		x	A, D
	486	Stake 358	<i>Juglans cinerea</i>	Butternut	0.406	16	for reference only	F	x		F
	487		<i>Betula</i>	Birch	0.500	20	old tree	G		x	A, B
	489	Tree assessed by others	<i>Juglans cinerea</i>	Butternut	0.406	16	for reference only	F	x		B, F
	491	Tree assessed by others	<i>Juglans cinerea</i>	Butternut	0.660	26	for reference only	P	x		B, F
	492	Stake 337	<i>Acer saccharum</i>	Sugar Maple	0.406, 0.558	14" x 3, 22	group of 4 trees, dieback / stem issues	F, F - P		x	A
001A	569		<i>Quercus</i>	Oak	0.330	13	2 stem	F - G		x	A
002A	570		<i>Fagus</i>	Beech	0.355	14		F - G		x	A
003A	571		<i>Fagus</i>	Beech	0.406	16		F - G		x	A
004A	572		<i>Acer saccharum</i>	Sugar Maple	0.406	16		F - G	x		C, D
005A	573		<i>Acer saccharum</i>	Sugar Maple	0.380	15		F - G	x		C, D
006A	574		<i>Acer saccharum</i>	Sugar Maple	0.355	14		F - G	x		C, D
007A	575		<i>Acer saccharum</i>	Sugar Maple	0.500	20		F - G	x		C, D
008A	576		<i>Ulmus</i>	Elm	0.355	14		F - G		x	A
009A	577		<i>Acer saccharum</i>	Sugar Maple	0.355	14		F - G	x		C, D
010A	578		<i>Acer saccharum</i>	Sugar Maple	0.380	15		F - G	x		C, D
011A	579		<i>Acer saccharum</i>	Sugar Maple	0.406	16		F - G		x	A
011A	580		<i>Fagus</i>	Beech	0.406	16		F - G		x	A

BIG BAY POINT ROAD PROPOSED MAIN ARTERIAL ROAD (NORTH/SOUTH)

Plan Reference Dwg TA-6
Dated March 5, 2009

TREE INVENTORY AND ASSESSMENT REPORT Appendix 'A'

Recommendation Categories

- A - Removal required due to conflict with proposed development and grading
- B - Removal recommended due to health and rate of species.
- C - Tree to be retained due to location outside limit of development / grading.
- D - Tree to be retained where proposed grading allows.
- E - Existing small trees and shrubs to be transplanted as directed.
- F - Tree on adjacent property recommended to be removed or pruned by Arborist.
- H - Hazard, dead or dying tree

Rating
G = Good
F = Fair
P = Poor

Photo	Tree Number	Location Within Development Property	Species		Approx. Size		Condition / Comments / Understorey	Rating	Potential For Preservation		Recommendations (see list)
			Botanical Name	Common Name	(m dia)	(inch)			High	Low	
	1	Road ↓	<i>Tsuga canadensis</i>	Hemlock	600			G	x		C, D
	2		<i>Pinus strobus</i>	White Pine	800			G	x		C, D
	3		<i>Tsuga canadensis</i>	Hemlock	600			F	x		C, D
	4		<i>Pinus strobus</i>	White Pine	600			G	x		C, D
	5		<i>Acer saccharum</i>	Sugar Maple	600			G	x		C, D
	6		<i>Pinus strobus</i>	White Pine	500			G	x		C, D
	7		<i>Acer saccharum</i>	Sugar Maple	750			G	x		C, D
	8		<i>Acer saccharum</i>	Sugar Maple	750			G	x		C, D
	9		<i>Acer saccharum</i>	Sugar Maple	650			G	x		C, D
	10		<i>Acer saccharum</i>	Sugar Maple	650			G	x		C, D
	11		<i>Acer saccharum</i>	Sugar Maple	675			G	x		C, D
	12		<i>Acer saccharum</i>	Sugar Maple	650			G	x		C, D
	13		<i>Fraxinus americana</i>	White Ash	700			G	x		C, D
	14		<i>Fagus grandifolia</i>	American Beech	550			G	x		C, D
	15		<i>Acer saccharum</i>	Sugar Maple	1200		3 stem	G	x		C, D
	16		<i>Acer saccharum</i>	Sugar Maple	1200		2 stem	G	x		C, D
	17		<i>Fagus grandifolia</i>	American Beech	1000		2 stem	G	x		C, D
	18		<i>Acer saccharum</i>	Sugar Maple	1000		2 stem	G	x		C, D
	19		<i>Acer saccharum</i>	Sugar Maple	750			G	x		C, D
	20		<i>Acer saccharum</i>	Sugar Maple	700			G	x		C, D
	21		<i>Acer saccharum</i>	Sugar Maple	700			G	x		C, D
	22		<i>Acer saccharum</i>	Sugar Maple	675			G	x		C, D
	23		<i>Acer saccharum</i>	Sugar Maple	600		3 stem	G	x		C, D
	24		<i>Juglans cinerea</i>	Butternut	1200		2 stem, diseased	F - P		x	A, B

BIG BAY POINT ROAD FORMER MARINA (S/E SITE) VEGETATION IN EXISTING HARBOUR

Plan Reference Dwg TA-7
Dated March 5, 2009

TREE INVENTORY AND ASSESSMENT REPORT Appendix 'A'

Recommendation Categories

- A - Removal required due to conflict with proposed development and grading
- B - Removal recommended due to health and rate of species.
- C - Tree to be retained due to location outside limit of development / grading.
- D - Tree to be retained where proposed grading allows.
- E - Existing small trees and shrubs to be transplanted as directed.
- F - Tree on adjacent property recommended to be removed or pruned by Arborist.
- H - Hazard, dead or dying tree

Rating
G = Good
F = Fair
P = Poor

Photo	Tree Number	Location Within Development Property	Species		Approx. Size		Condition / Comments / Understorey	Rating	Potential For Preservation		Recommendations (see list)	
			Botanical Name	Common Name	(m dia)	(inch)			High	Low		
	T-1	Southwest harbour area ↓	<i>Thuja occidentalis</i>	Eastern White Cedar	600 - 3m		108 units, suitable for transplant	G	x		E	
	T-2		<i>Juniperus virginiana</i>	Red Cedar	3.5m		1 unit, suitable for transplant	G	x		E	
	T-3		<i>Thuja occidentalis</i>	Eastern White Cedar	1.0 - 2.5		6 units, suitable for transplant	G	x		E	
	T-4		<i>Thuja occidentalis</i>	Eastern White Cedar	2.0		3 stem clump, suitable for transplant	G	x		E	
	T-5		<i>Thuja occidentalis</i>	Eastern White Cedar	600 - 1.2		4 units, suitable for transplant	G	x		E	
	A-18		<i>Thuja occidentalis</i>	Eastern White Cedar	600		multi, fair - some bark loss	F			A, D	
	A-19		<i>Thuja occidentalis</i>	Eastern White Cedar	400			G	x		A, D	
	A-20		<i>Fraxinus americana</i>	White Ash	125			G			A, D	
	A-21		<i>Ulmus sp.</i>	Elm var.	150		dead	P		x	H, remove	
	A-22		<i>Thuja occidentalis</i>	Eastern White Cedar	5m ht		3 stems	G		x	A	
	A-23		<i>Thuja occidentalis</i>	Eastern White Cedar	4m ht		3 stems, spindly	F		x	A	
	A-24		<i>Thuja occidentalis</i>	Eastern White Cedar	4.5m ht			G		x	A	
	A-25		Southeast harbour area ↓	<i>Thuja occidentalis</i>	Eastern White Cedar	6m ht		24 multi	G		x	A
	A-26			<i>Thuja occidentalis</i>	Eastern White Cedar	5m ht		topped	P		x	A
	A-27	<i>Thuja occidentalis</i>		Eastern White Cedar	7.5m ht		multi	G		x	A	
	A-28	<i>Thuja occidentalis</i>		Eastern White Cedar	7.5m ht		some dieback	F		x	A	
	A-29	<i>Thuja occidentalis</i>		Eastern White Cedar	7.0m ht			G		x	A	
	A-30	<i>Thuja occidentalis</i>		Eastern White Cedar	7.5m ht	400 dia	good			x	A	
	A-58	<i>Populus tremuloides</i>		Trembling Aspen		< 150	group of 8	F		x	A	
	A-59	<i>Populus tremuloides</i>		Trembling Aspen	4m ht			P		x	B	
	A-60	<i>Populus tremuloides</i>		Trembling Aspen	2.5m ht			P		x	B	
	A-61	<i>Populus tremuloides</i>		Trembling Aspen	4m ht		2 stem	P		x	B	
	A-62	<i>Populus tremuloides</i>		Trembling Aspen	3.5m ht		multi, 90% dead	P		x	B	
	A-63	<i>Populus tremuloides</i>		Trembling Aspen	5m ht		leaning	P		x	B	
	A-64	<i>Populus tremuloides</i>		Trembling Aspen	7m ht		very poor / leaning	P		x	B	
	A-65	<i>Populus tremuloides</i>	Trembling Aspen	6m ht		multi, leaning	P		x	B		
	A-66	<i>Populus tremuloides</i>	Trembling Aspen	6m ht		multi	P		x	B		
	A-67	<i>Populus tremuloides</i>	Trembling Aspen	6m ht			P		x	B		
	025	East harbour and road area ↓	<i>Fraxinus americana</i>	White Ash	700			G		x	A	
	026		<i>Betula papyrifera</i>	White Birch	450		large gash in trunk	P		x	B	
	027/878		<i>Fraxinus americana</i>	White Ash	800			G		x	A	
	028		<i>Thuja occidentalis</i>	Eastern White Cedar	3m			G		x	A	
	029		<i>Thuja occidentalis</i>	Eastern White Cedar	3m			G		x	A	
	030	<i>Picea pungens 'Glauca'</i>	Blue Spruce	2.0m		fair	F		x	F		

BIG BAY POINT ROAD FORMER MARINA (S/E SITE) VEGETATION IN EXISTING HARBOUR

Plan Reference Dwg TA-7
Dated March 5, 2009

TREE INVENTORY AND ASSESSMENT REPORT Appendix 'A'

Recommendation Categories

- A - Removal required due to conflict with proposed development and grading
- B - Removal recommended due to health and rate of species.
- C - Tree to be retained due to location outside limit of development / grading.
- D - Tree to be retained where proposed grading allows.
- E - Existing small trees and shrubs to be transplanted as directed.
- F - Tree on adjacent property recommended to be removed or pruned by Arborist.
- H - Hazard, dead or dying tree

Rating
G = Good
F = Fair
P = Poor

Photo	Tree Number	Location Within Development Property	Species		Approx. Size		Condition / Comments / Understorey	Rating	Potential For Preservation		Recommendations (see list)
			Botanical Name	Common Name	(m dia)	(inch)			High	Low	
	031	Road area ↓	<i>Picea pungens 'Glauca'</i>	Blue Spruce	2.0m		fair	F		x	F
	032		<i>Thuja occidentalis</i>	Eastern White Cedar	7m			G		x	A
	033		<i>Thuja occidentalis</i>	Eastern White Cedar	7m			G		x	A
	034		<i>Thuja occidentalis</i>	Eastern White Cedar	7m			G		x	A
	035		<i>Thuja occidentalis</i>	Eastern White Cedar	7m			G		x	A
	036		<i>Thuja occidentalis</i>	Eastern White Cedar	7m			G		x	A
	037		<i>Thuja occidentalis</i>	Eastern White Cedar	7m			G		x	A
	038		<i>Fraxinus americana</i>	White Ash	400		3 stem	F - G		x	A
	039		<i>Thuja occidentalis</i>	Eastern White Cedar	7m			G		x	A
	040		<i>Thuja occidentalis</i>	Eastern White Cedar	7m			G		x	A
	041		<i>Fraxinus americana</i>	White Ash	650		split trunk	P		x	A
	042		<i>Thuja occidentalis</i>	Eastern White Cedar	7m			G		x	A
	043		<i>Fraxinus americana</i>	White Ash	250			G		x	A
	044		<i>Fraxinus americana</i>	White Ash	400		some crown dieback			x	A
	045		<i>Ulmus americana</i>	American Elm	600			G		x	A
	046		<i>Fraxinus americana</i>	White Ash	250			F		x	A
	047		<i>Fraxinus americana</i>	White Ash	200			F		x	A
	048		<i>Fraxinus americana</i>	White Ash	125		crown dieback	P		x	A
	049		<i>Fraxinus americana</i>	White Ash	300			P		x	A
	050		<i>Fraxinus americana</i>	White Ash	400		leaning	F		x	A
	051		<i>Fraxinus americana</i>	White Ash	350		poor form	F		x	A
	59-69	West harbour area ↓	<i>Thuja occidentalis</i>	Eastern White Cedar	3.5		multi	F - P		x	A
	70		<i>Thuja occidentalis</i>	Eastern White Cedar	3.5		single	F - P		x	A
	71		<i>Thuja occidentalis</i>	Eastern White Cedar	3.5			F - P		x	A
	72		<i>Thuja occidentalis</i>	Eastern White Cedar	3.5			F - P		x	A
	73		<i>Thuja occidentalis</i>	Eastern White Cedar	3.5			F - P		x	A
	74		<i>Thuja occidentalis</i>	Eastern White Cedar	3.5			F - P		x	A
	75		<i>Thuja occidentalis</i>	Eastern White Cedar	3.5			F - P		x	A
	76		<i>Thuja occidentalis</i>	Eastern White Cedar	3.5			F - P		x	A
	77		<i>Thuja occidentalis</i>	Eastern White Cedar	3.5			G	x		E
	78		<i>Thuja occidentalis</i>	Eastern White Cedar	5.0			G	x		E
	79		<i>Thuja occidentalis</i>	Eastern White Cedar	4.0		clump	F		x	A, B
	80		<i>Thuja occidentalis</i>	Eastern White Cedar	4.0		clump	F		x	A, B
	81	<i>Thuja occidentalis</i>	Eastern White Cedar	4.0		clump	F		x	A, B	

BIG BAY POINT ROAD FORMER MARINA (S/E SITE) VEGETATION IN EXISTING HARBOUR

Plan Reference Dwg TA-7
Dated March 5, 2009

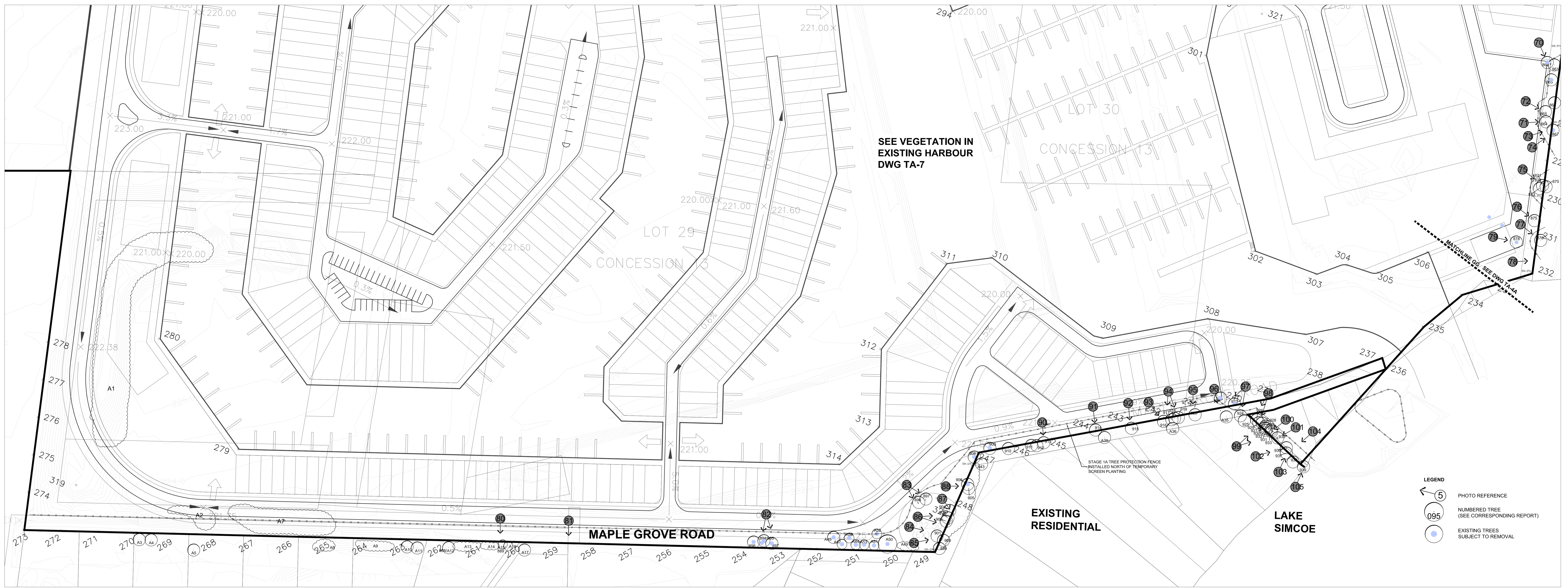
TREE INVENTORY AND ASSESSMENT REPORT Appendix 'A'




Recommendation Categories

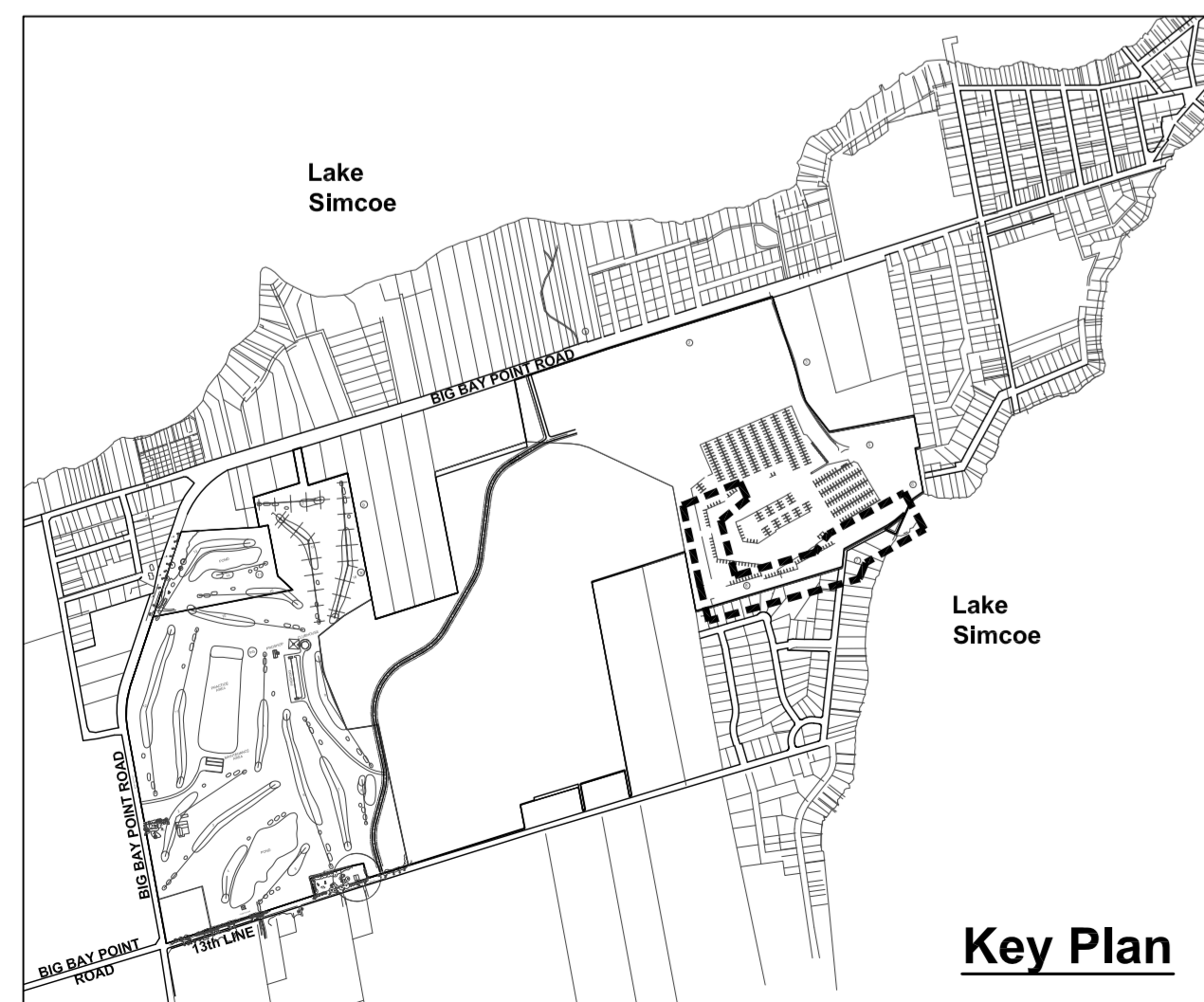
- A - Removal required due to conflict with proposed development and grading
- B - Removal recommended due to health and rate of species.
- C - Tree to be retained due to location outside limit of development / grading.
- D - Tree to be retained where proposed grading allows.
- E - Existing small trees and shrubs to be transplanted as directed.
- F - Tree on adjacent property recommended to be removed or pruned by Arborist.
- H - Hazard, dead or dying tree

Rating
G = Good
F = Fair
P = Poor

Photo	Tree Number	Location Within Development Property	Species		Approx. Size		Condition / Comments / Understorey	Rating	Potential For Preservation		Recommendations (see list)
			Botanical Name	Common Name	(m dia)	(inch)			High	Low	
	82	West harbour area ↓	<i>Thuja occidentalis</i>	Eastern White Cedar	4.5		clump	F		x	A, B
	83		<i>Thuja occidentalis</i>	Eastern White Cedar	4.0		clump	F		x	A, B
	84		<i>Thuja occidentalis</i>	Eastern White Cedar	3.0		almost dead	P		x	A, B
	85		<i>Thuja occidentalis</i>	Eastern White Cedar	3.0		broken	P		x	A, B
	86		<i>Thuja occidentalis</i>	Eastern White Cedar	3.0		spindly	P		x	A, B
	87		<i>Thuja occidentalis</i>	Eastern White Cedar	4.5 - 5.0		clumps	G		x	A, B
	88-102		<i>Thuja occidentalis</i>	Eastern White Cedar	6-7m			G		x	A, B
	103-116		<i>Thuja occidentalis</i>	Eastern White Cedar	5m			P		x	A, B
	117		<i>Thuja occidentalis</i>	Eastern White Cedar	3.0		single	G		x	A, B
	118 - 120A-F		<i>Thuja occidentalis</i>	Eastern White Cedar	3.0		tight group, crown dieback	F		x	A, B
	121-129		<i>Fraxinus americana</i>	White Ash	350 - 400					x	A, B
	130		<i>Ulmus americana</i>	American Elm	700		good	G		x	A, B
	131		<i>Fraxinus americana</i>	White Ash	500		poor - crown dieback	P		x	A, B
	132		<i>Fraxinus americana</i>	White Ash	400		good	G		x	A, B
	133		<i>Betula papyrifera</i>	White Birch	375			G		x	A, B
	T-5		<i>Thuja occidentalis</i>	Eastern White Cedar	< 1.0m ht		9 units, suitable for transplant	F	x		E
	T-6	<i>Thuja occidentalis</i>	Eastern White Cedar	< 1.5m ht		26 units, suitable for transplant	F	x		E	
	T-7	<i>Thuja occidentalis</i>	Eastern White Cedar	to 2.5m		55 units, suitable for transplant	F	x		E	



- LEGEND**
-  PHOTO REFERENCE
 -  NUMBERED TREE (SEE CORRESPONDING REPORT)
 -  EXISTING TREES SUBJECT TO REMOVAL



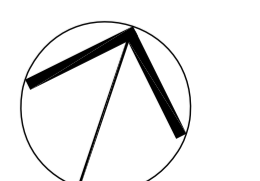
**BIG BAY POINT RESORT COMMUNITY,
TOWN OF INNISFIL
TREE INVENTORY AND
ASSESSMENT PLAN**

LOCATION: **BIG BAY POINT SOUTH LIMIT OF SITE
NEW ROAD ROW (E/W) AND SOUTH PROPERTY EDGE
AT EXISTING RESIDENTIAL AREA**

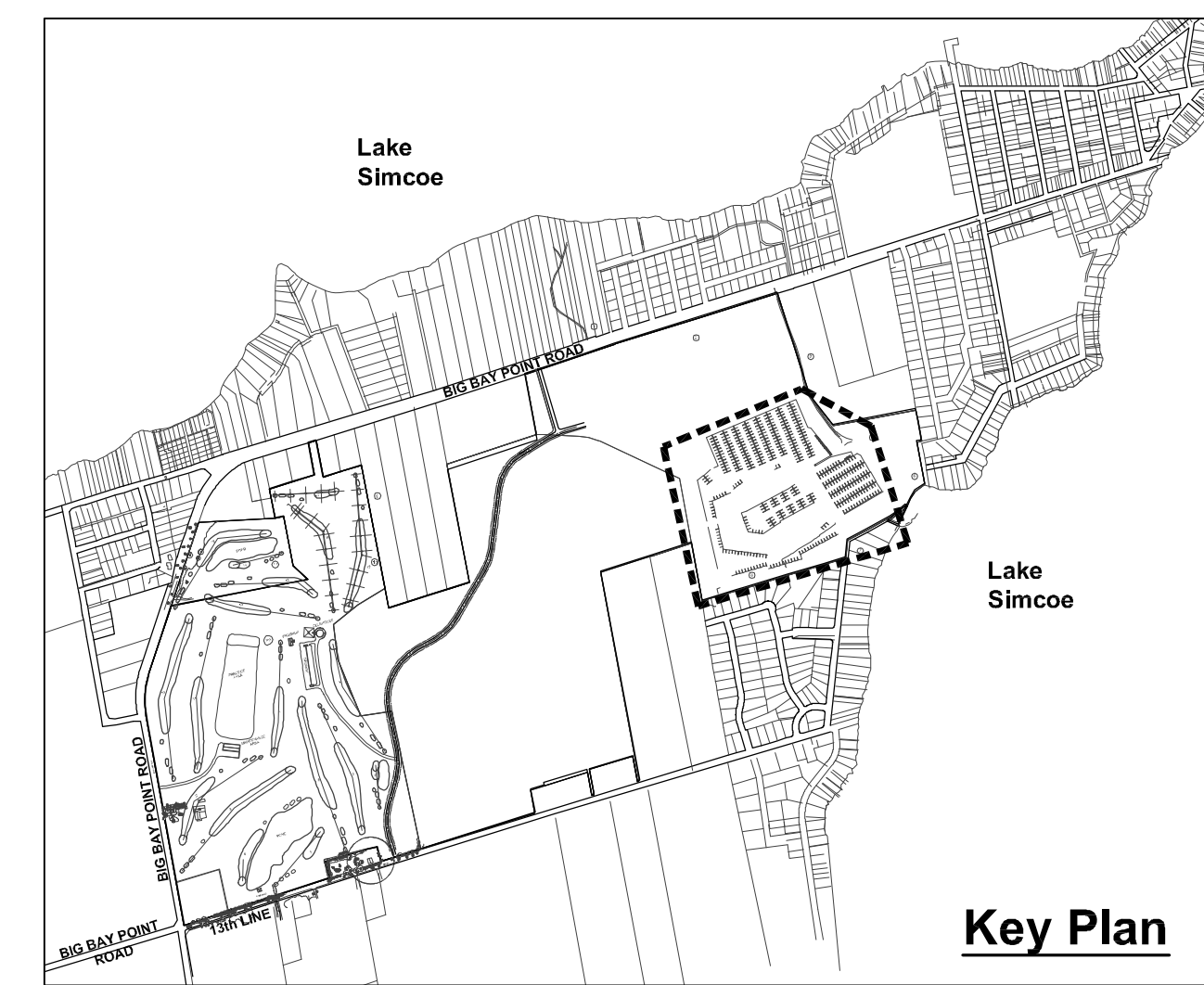
SCHOLLEN & Company Inc.
220 Duncan Mill Road, Suite 109
Don Mills, Ontario M3B 3J5
Tel: 416-441-3044
Fax: 416-441-6010

Scale: 1:750

Project No: 27008 Issued for Approval January 6, 2010



TA-4B



LEGEND

095 NUMBERED TREE (SEE CORRESPONDING REPORT)

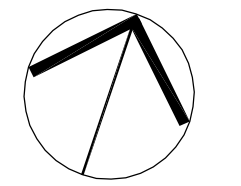
**BIG BAY POINT RESORT COMMUNITY,
TOWN OF INNISFIL
TREE INVENTORY AND
ASSESSMENT PLAN**

LOCATION: **BIG BAY POINT FORMER MARINA (S/E) SITE**
VEGETATION IN EXISTING HARBOUR

SCHOLLEN & Company Inc.
220 Duncan Mill Road, Suite 109
Don Mills, Ontario M3B 3J5
Tel: 416-441-3044
Fax: 416-441-6010

Scale: 1:750

Project No: 27008 Issued for Approval January 6, 2010



TA-7