

DWG TC-5
 LOCATION:
 NORTH GOLF COURSE EDGE
 AT GOLF HOLES 16 - 18

DWG TC-3
 LOCATION: BIG BAY POINT ROAD
 (E/W R.O.W.) NORTH LIMIT OF SITE

AREA 1B
 TREE REMOVAL IN AREA 1B
 WILL BE DEFERRED UNTIL
 FALL / WINTER 2010
ACCESS
 RELOCATED TREE PRESERVATION
 FENCING AT AREA 1B,
 NORTH SIDE OF FUTURE ROAD

DWG TC-4A
 LOCATION: BIG BAY POINT
 EAST LIMIT OF EXISTING ACCESS ROAD
 LIMIT OF AREA 1A TO WEST SIDE
 OF EXISTING ACCESS ROAD
 ALONG THIS SEGMENT
 EXISTING WOODLOT
 TO REMAIN LIMIT
 AS SHOWN

DWG TC-8
 LOCATION: BIG BAY POINT
 WEST LIMIT OF SITE
 NEW ROAD ROW AT WEST
 PROPERTY EDGE
 FOR THIS SEGMENT, LIMIT OF
 CLEARING IS SOUTHWEST SIDE OF
 EXISTING LOGGING / ACCESS ROAD

DWG TC-6
 LOCATION:
 BIG BAY POINT ROAD
 PROPOSED MAIN ARTERIAL ROAD
 (NORTH / SOUTH)
 FALL / WINTER 2010

DWG TC-4B
 LOCATION: BIG BAY POINT SOUTH LIMIT OF SITE
 NEW ROAD ROW (E/W) AND SOUTH PROPERTY
 EDGE AT EXISTING RESIDENTIAL AREA

DWG TC-7
 LOCATION: BIG BAY POINT FORMER MARINA (S/E) SITE
 VEGETATION IN EXISTING HARBOUR

- LEGEND**
- RETAINABLE BUTTERNUT
 - NON-RETAINABLE BUTTERNUT
 - TREE PROTECTION FENCE
 - PROTECTED VEGETATION AREAS
 - GENERAL TREE CLEARING AREAS

NOT IN CONTRACT
DWG. TC-2
 LOCATION:
 BIG BAY POINT ROAD
 NORTH OF 13th LINE
 AT GRAVEL PIT EDGE
 Stage 1B-2
 Tree Removal

NOT IN CONTRACT
DWG TC-2
 LOCATION:
 BIG BAY POINT ROAD
 NORTH OF 13th LINE
 AT FARMSTEAD

DWG TC-1
 LOCATION: HEDGEROW AT 13TH LINE
 WEST EDGE AT BIG BAY POINT ROAD INTERSECTION

NOTE:
 REFER TO DRAWINGS BY SCS CONSULTING GROUP LTD
 FOR EROSION AND SEDIMENT CONTROL MEASURES

NOTE RE: MIGRATORY BIRDS ACT
 NO TREE CUTTING OR REMOVAL IS TO OCCUR
 DURING THE PERIOD BETWEEN APRIL 30 AND JULY
 31 IN ACCORDANCE WITH THE REQUIREMENTS OF
 THE MIGRATORY BIRDS ACT

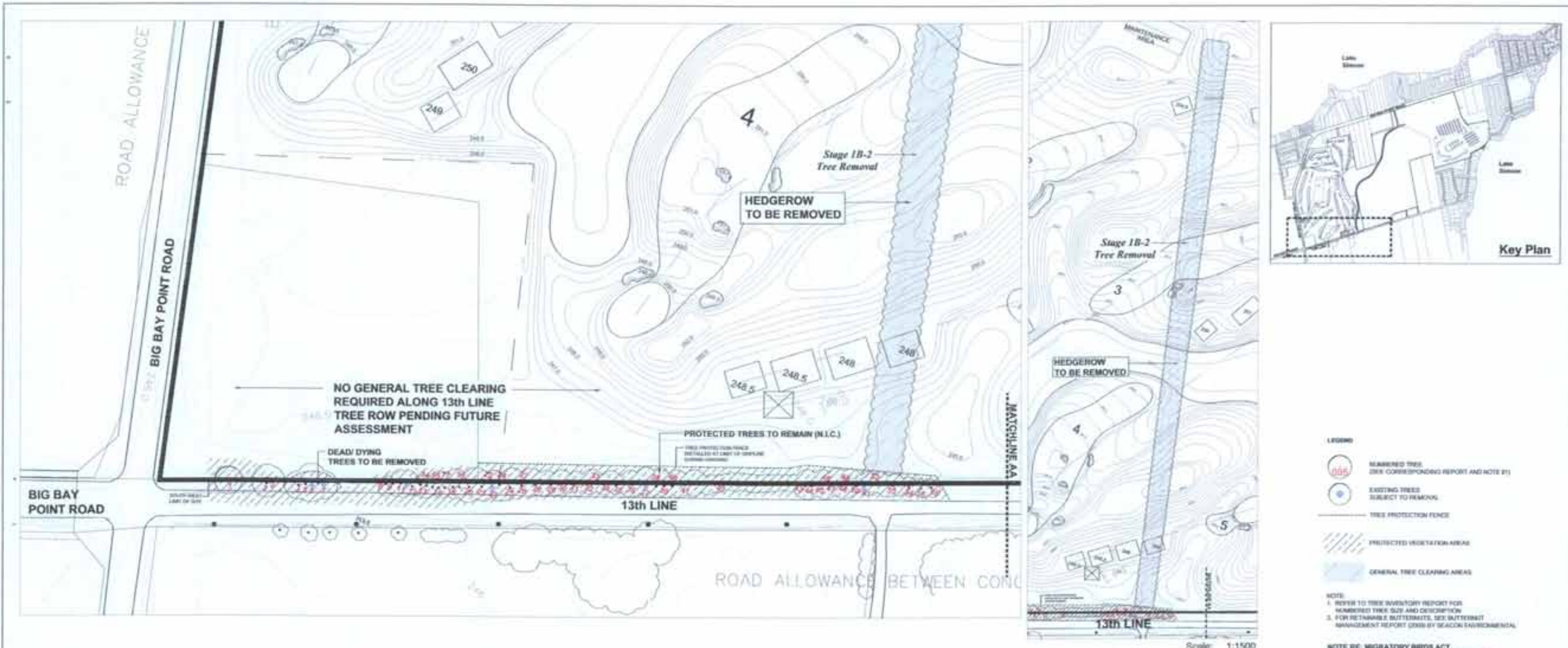
**BIG BAY POINT RESORT COMMUNITY,
 TOWN OF INNISFIL
 Tree Inventory and
 Clearing Plan / Key Plan**

SCHOLLEN & Company Inc.
 220 Duncan Mill Road, Suite 103
 Don Mills, Ontario M3B 3J5
 Tel: 416-441-3044
 Fax: 416-441-6010

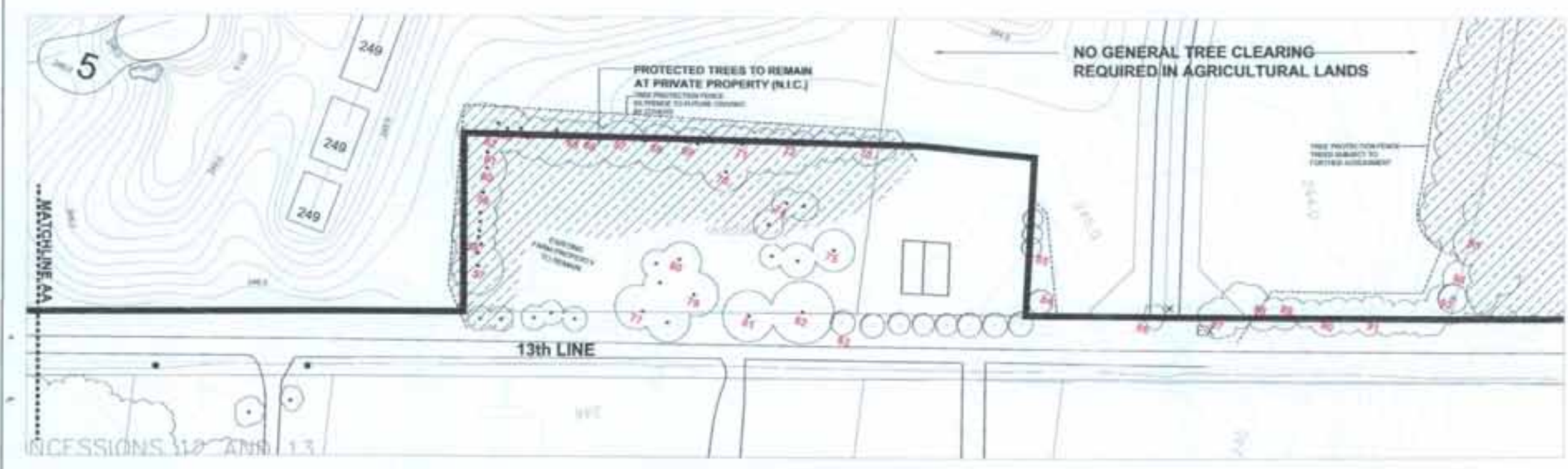
Project No: 27008

Issued for Approval January 6, 2010

TC-0



- LEGEND**
- NUMBERED TREE (SEE CORRESPONDING REPORT AND NOTE #1)
 - EXISTING TREE SUBJECT TO REMOVAL
 - TREE PROTECTION FENCE
 - PROTECTED VEGETATION AREA
 - GENERAL TREE CLEARING AREA
- NOTE**
1. REFER TO TREE INVENTORY REPORT FOR NUMBERED TREE SIZE AND DESCRIPTION
 2. FOR RETAINABLE BUTTERFLIES, SEE BUTTERFLY MANAGEMENT REPORT (ISSUED BY SEACON ENVIRONMENTAL)
- NOTE RE. MIGRATORY BIRDS ACT**
 NO TREE CUTTING OR REMOVAL IS TO OCCUR DURING THE PERIOD BETWEEN APRIL 30 AND JULY 31 IN ACCORDANCE WITH THE REQUIREMENTS OF THE MIGRATORY BIRDS ACT

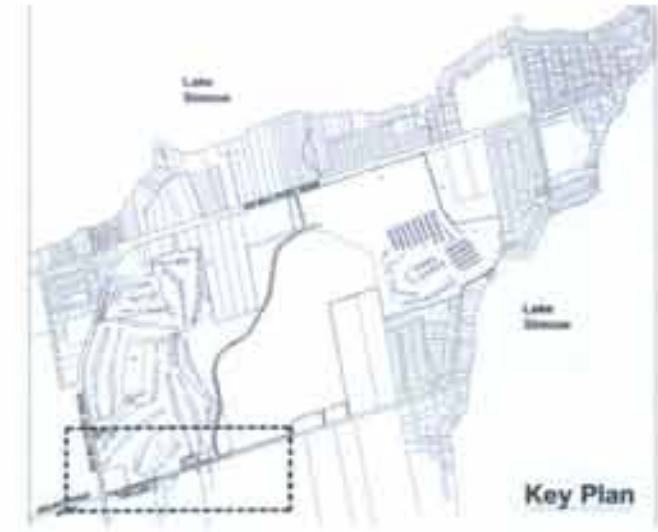


**BIG BAY POINT RESORT COMMUNITY,
 TOWN OF INNISFIL
 Tree Clearing Plan**

LOCATION: HEDGEROW AT 13TH LINE
 WEST EDGE AT BIG BAY POINT ROAD INTERSECTION

SCHOLLEN & Company Inc.
 220 Duncan Mill Road, Suite 108
 Don Mills, Ontario M3B 3J5
 Tel: 416-441-3044
 Fax: 416-441-6010

Project No: 27008
 Issued for Approval January 6, 2010



Legend

Limit of Development	Coniferous Forest
Ecological Land Classification	Deciduous Forest
Agricultural	Mixed Forest
Cultural Hedge	Meadow Marsh
Cultural Meadow	Shallow Marsh
Cultural Plantation	Mixed Shallow Aquatic
Cultural Thicket	Shallow Aquatic
Cultural Woodland	Coniferous Swamp
Disturbed	Deciduous Swamp
	Mixed Swamp

INVENTORY BY GARTNER LEE AND BLACK ENVIRONMENTAL



LEGEND

NUMERED TREE (SEE CORRESPONDING REPORT AND NOTE #1)
EXISTING TREES SUBJECT TO REMOVAL
TREE PROTECTION FENCE
PROTECTED VEGETATION AREAS

NOTE:
 1. REFER TO TREE INVENTORY REPORT FOR NUMERED TREE SIZE AND DESCRIPTION
 2. FOR RETAINABLE BUTTERFLITS, SEE BUTTERFLIT MANAGEMENT REPORT (2009) BY BLACK ENVIRONMENTAL

NOTE RE: MIGRATORY BIRDS ACT
 NO TREE CUTTING OR REMOVAL IS TO OCCUR DURING THE PERIOD BETWEEN APRIL 30 AND JULY 31 IN ACCORDANCE WITH THE REQUIREMENTS OF THE MIGRATORY BIRDS ACT

**BIG BAY POINT RESORT COMMUNITY,
 TOWN OF INNISFIL
 Tree Clearing Plan
 Ecological Land Classification**

LOCATION: HEDGEROW AT 13TH LINE
 WEST EDGE AT BIG BAY POINT ROAD INTERSECTION

SCHOLLEN & Company Inc.
 220 Duncan Mill Road, Suite 100
 Don Mills, Ontario M3B 3J5
 Tel: 416-441-3044
 Fax: 416-441-6010



Project No: 27008

Issued for Approval January 6, 2010

TC-1(ELC)



- LEGEND**
- NUMBERED TREE (SEE CORRESPONDING REPORT AND NOTE #1)
 - EXISTING TREE SUBJECT TO REMOVAL
 - TREE PROTECTION FENCE
 - PROTECTED VEGETATION AREAS
 - GENERAL TREE CLEARING AREAS
 - SURVEY STAKE REFERENCE NUMBER
- NOTE:**
1. REFER TO TREE INVENTORY REPORT FOR NUMBERED TREE SIZE AND DESCRIPTION
 2. FOR RETAINABLE BUTTERFLIES, SEE BUTTERFLY MANAGEMENT REPORT (DIB) BY BRACON ENVIRONMENTAL

**BIG BAY POINT RESORT COMMUNITY,
TOWN OF INNISFIL
Tree Clearing Plan**

AREA NOT IN CONTRACT
LOCATION: BIG BAY POINT ROAD NORTH OF 13th LINE
AT FARMSTEAD AND GRAVEL PIT EDGE

SCHOLLEN & Company Inc.
220 Duran Mill Road, Suite 109
Don Mills, Ontario M3B 3J6
Tel: 416-441-3044
Fax: 416-441-6010



NOTE RE: MIGRATORY BIRDS ACT
NO TREE CUTTING OR REMOVAL IS TO OCCUR
DURING THE PERIOD BETWEEN APRIL 30 AND JULY
31 IN ACCORDANCE WITH THE REQUIREMENTS OF
THE MIGRATORY BIRDS ACT

Project No: 27008

Issued for Approval January 6, 2010



FARMSTEAD PLAN

LEGEND

- MAMMAL TREE (SEE CORRESPONDING REPORT AND NOTE #1)
- EXISTING TREES SUBJECT TO REMOVAL
- TREE PROTECTION FENCE
- PROTECTED VEGETATION AREA
- GENERAL TREE CLEARING AREA
- SURVEY STAKE REFERENCE NUMBER

- NOTE:
1. REFER TO TREE INVENTORY REPORT FOR NUMBERED TREE SIZE AND DESCRIPTION
 2. FOR RETAINABLE BUTTERNUTS, SEE BUTTERNUT MANAGEMENT REPORT (2006) BY BEACON ENVIRONMENTAL

Legend

- | | |
|---------------------|-----------------------|
| Land of Development | Coniferous Forest |
| Agricultural | Deciduous Forest |
| Cultural Hedge | Mixed Forest |
| Cultural Meadow | Meadow Marsh |
| Cultural Plantation | Shallow Marsh |
| Cultural Thicket | Mixed Shallow Aquatic |
| Cultural Woodswell | Shallow Aquatic |
| Disturbed | Coniferous Swamp |
| | Deciduous Swamp |
| | Mixed Swamp |
- INVENTORY BY GARTHNER LEE AND BEACON ENVIRONMENTAL

**BIG BAY POINT RESORT COMMUNITY,
TOWN OF INNISFIL
Tree Clearing Plan
Ecological Land Classification**

AREA NOT IN CONTRACT
LOCATION: BIG BAY POINT ROAD NORTH OF 13TH LINE
AT FARMSTEAD AND GRAVEL PIT EDGE

SCHOLLEN & Company Inc.
220 Duncan Mill Road, Suite 100
Don Mills, Ontario M3B 3J5
Tel: 416-441-3044
Fax: 416-441-6010

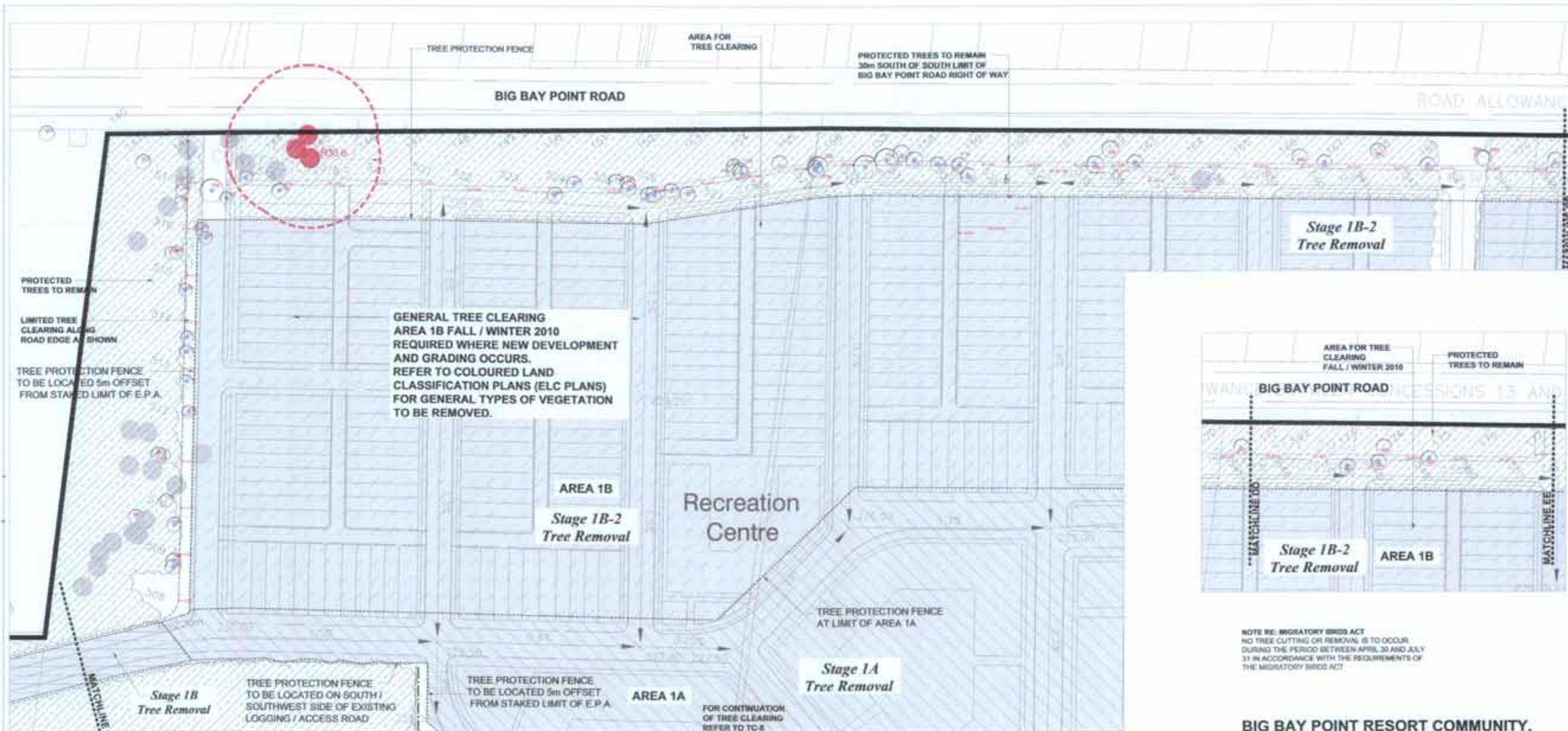


Project No: 27008

Issued for Approval January 6, 2010

TC-2 (ELC)

NOTE RE: MIGRATORY BIRDS ACT
NO TREE CUTTING OR REMOVAL IS TO OCCUR
DURING THE PERIOD BETWEEN APRIL 30 AND JULY
31 IN ACCORDANCE WITH THE REQUIREMENTS OF
THE MIGRATORY BIRDS ACT



NOTE RE: MIGRATORY BIRDS ACT
 NO TREE CUTTING OR REMOVAL IS TO OCCUR DURING THE PERIOD BETWEEN APRIL 30 AND JULY 31 IN ACCORDANCE WITH THE REQUIREMENTS OF THE MIGRATORY BIRDS ACT

**BIG BAY POINT RESORT COMMUNITY,
 TOWN OF INNISFIL
 Tree Clearing Plan**

LOCATION: BIG BAY POINT ROAD (E/W R.O.W.) NORTH LIMIT OF SITE

SCHOLLEN & Company Inc.
 220 Duncan Mill Road, Suite 108
 Don Mills, Ontario M3B 3J5
 Tel: 416-441-3044
 Fax: 416-441-6010



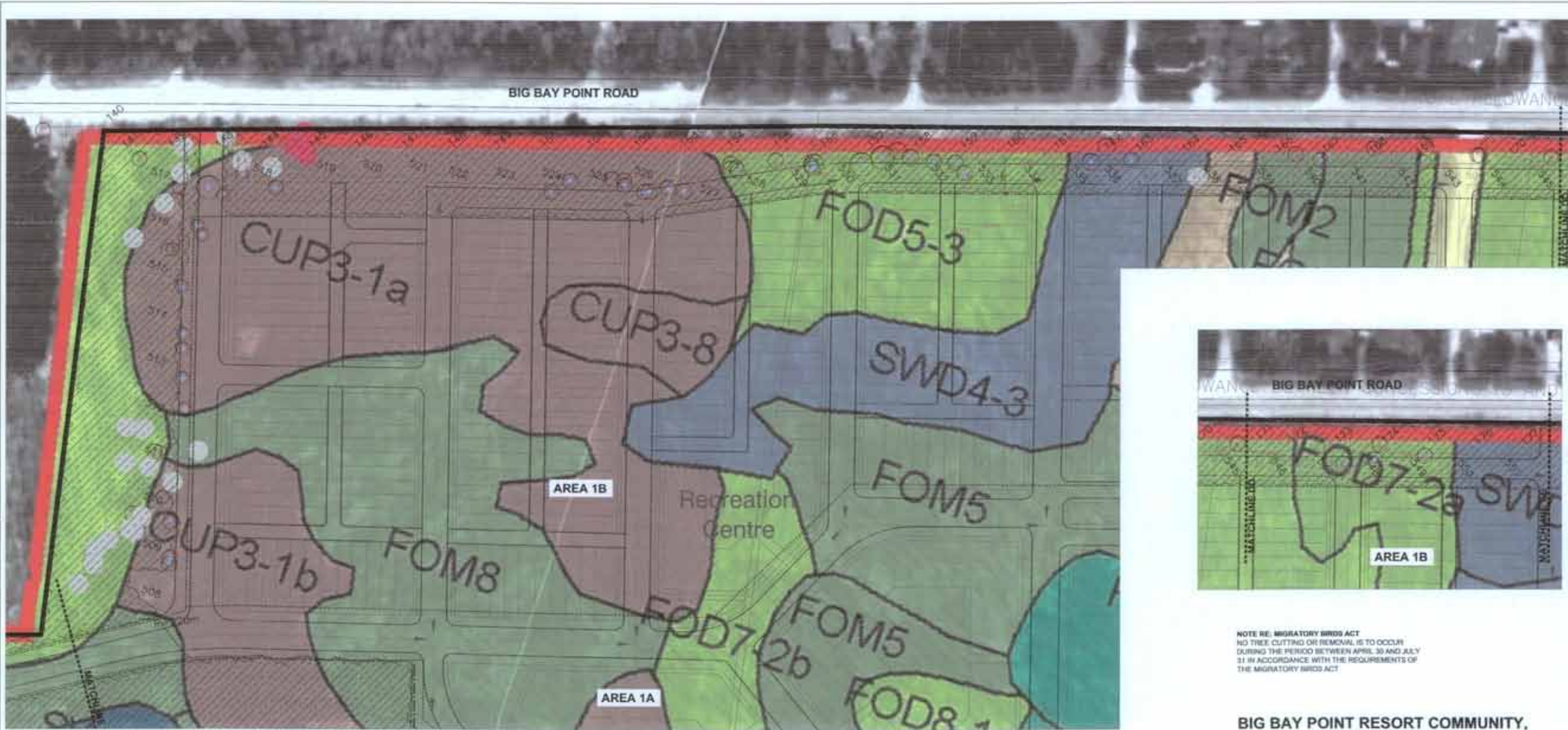
Project No: 27008

Issued for Approval January 6, 2010



- LEGEND**
- NUMBERED TREE (SEE CORRESPONDING REPORT AND NOTE #1)
 - EXISTING TREES (SUBJECT TO REMOVAL)
 - RETAINABLE BUTTERFLY (SEE NOTE #2)
 - NON-RETAINABLE BUTTERFLY
 - TREE PROTECTION FENCE
 - PROTECTED VEGETATION AREA
 - GENERAL TREE CLEARING AREA
 - SURVEY STAKE REFERENCE NUMBER

NOTE:
 1. REFER TO TREE INVENTORY REPORT FOR NUMBERED TREE SIZE AND DESCRIPTION
 2. FOR RETAINABLE BUTTERFLYS, SEE BUTTERFLY MANAGEMENT REPORT (2006) BY BEACON ENVIRONMENTAL. BUTTERFLY TREES (SHOWN RED) TO REMAIN UNTIL FUTURE REMOVAL IS APPROVED BY NRP. IN THE SHORT TERM, MAINTAIN 30M BUFFER ZONE AROUND EACH RETAINABLE BUTTERFLY TREE.



NOTE RE: MIGRATORY BIRDS ACT
 NO TREE CUTTING OR REMOVAL IS TO OCCUR DURING THE PERIOD BETWEEN APRIL 30 AND JULY 31 IN ACCORDANCE WITH THE REQUIREMENTS OF THE MIGRATORY BIRDS ACT



Legend

Limit of Development	Continuous Forest
Ecological Land Classification	Deciduous Forest
Agricultural	Mixed Forest
Cultural Hedge	Shallow Marsh
Cultural Meadow	Shallow Marsh
Cultural Plantation	Mixed Shallow Aquatic
Cultural Thicket	Shallow Aquatic
Cultural Woodland	Continuous Swamp
Disturbed	Deciduous Swamp
	Mixed Swamp

INVENTORY BY GARDINER & WHITMAN ENVIRONMENTAL

LEGEND

(N55)	NUMBERED TREE (SEE CORRESPONDING REPORT AND NOTE #1)
(E)	EXISTING TREES SUBJECT TO REMOVAL
(R)	RETAINABLE BUTTERFLIT (SEE NOTE #2)
(NR)	NON RETAINABLE BUTTERFLIT
(F)	TREE PROTECTION FENCE
(PVA)	PROTECTED VEGETATION AREA
(S)	SURVEY STAKE REFERENCE NUMBER

NOTE
 1. REFER TO TREE INVENTORY REPORT FOR NUMBERED TREE SIZE AND DESCRIPTION
 2. FOR RETAINABLE BUTTERFLITS, SEE BUTTERFLIT MANAGEMENT REPORT (2006) BY GARDINER & WHITMAN ENVIRONMENTAL

**BIG BAY POINT RESORT COMMUNITY,
 TOWN OF INNISFIL
 Tree Clearing Plan
 Ecological Land Classification**

LOCATION: BIG BAY POINT ROAD
 (E/W R.O.W.) NORTH LIMIT OF SITE

SCHOLLEN & Company Inc.
 200 Duncan Mill Road, Suite 109
 Don Mills, Ontario M3B 3J5
 Tel: 416-441-3044
 Fax: 416-441-6010

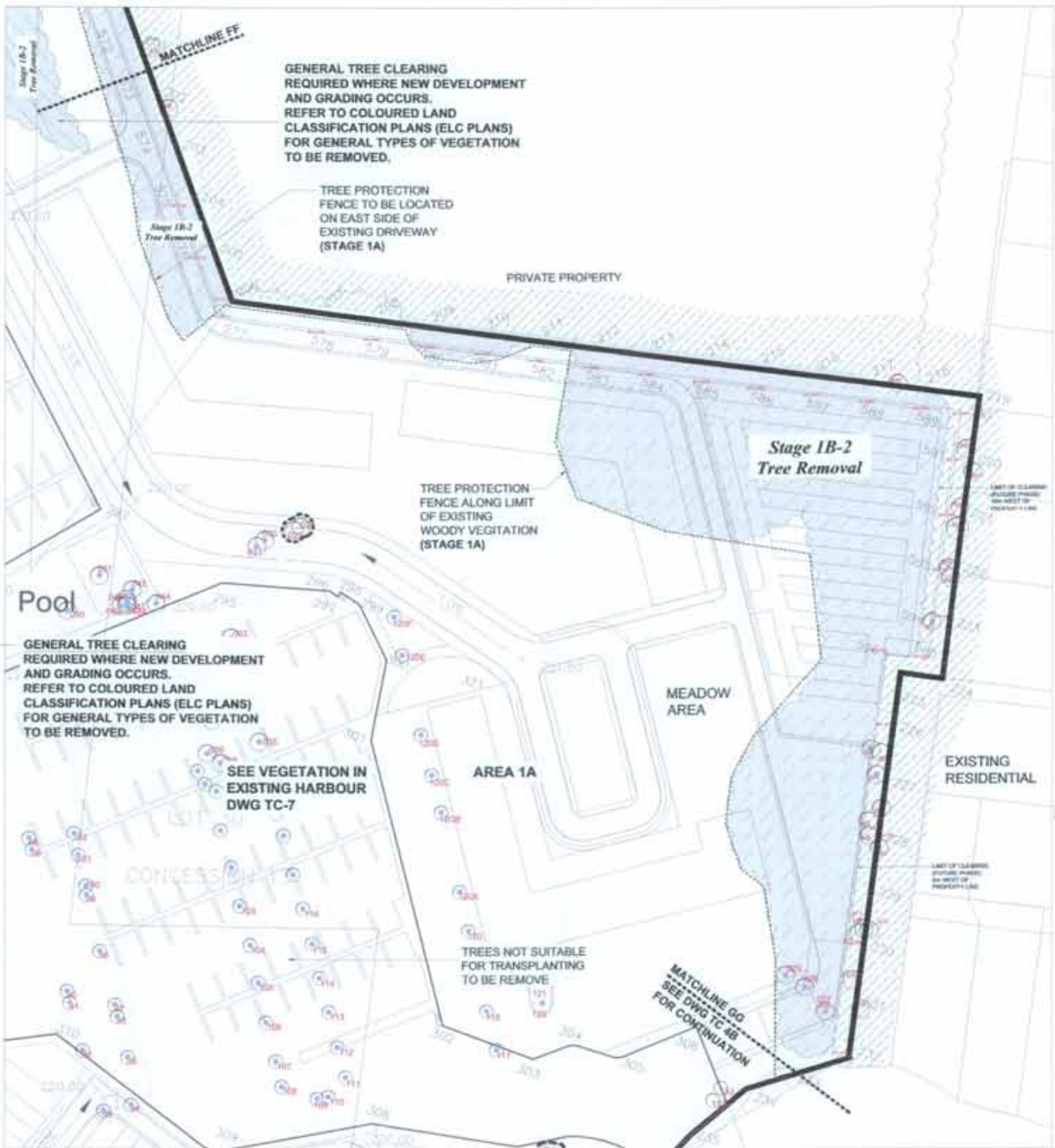
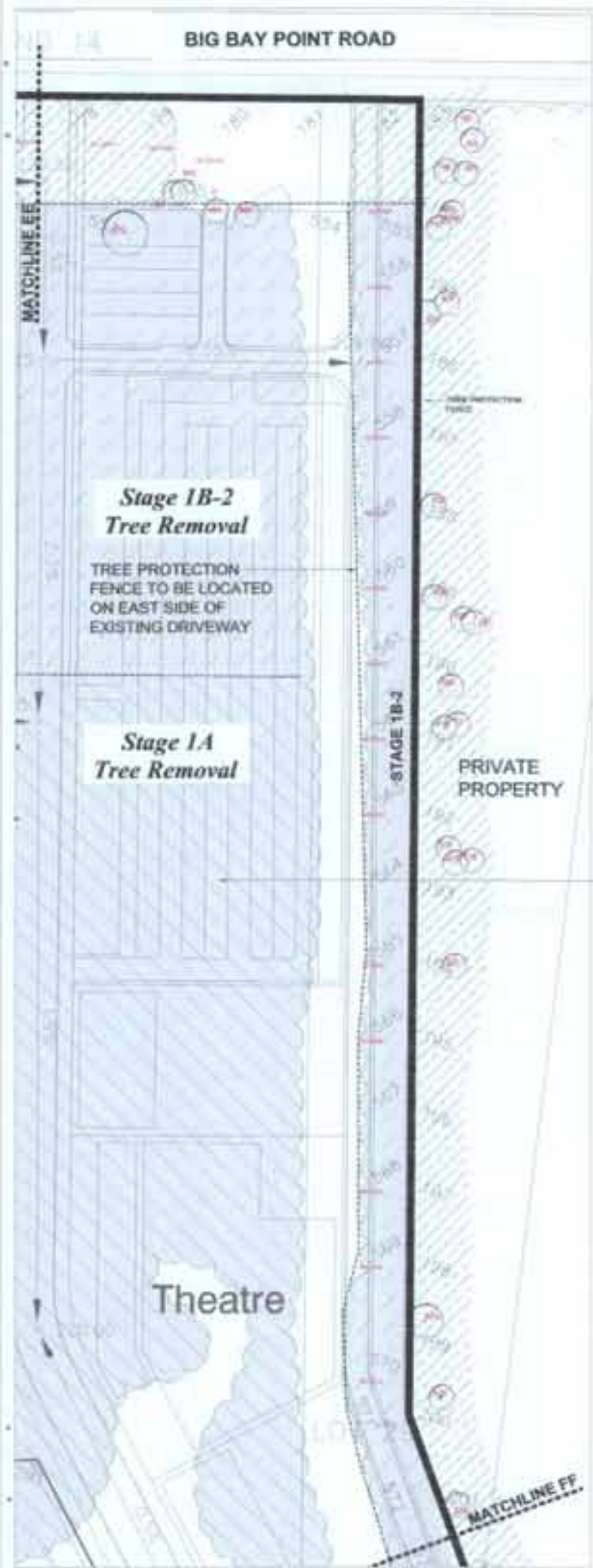


Project No: 27008

Issued for Approval January 6, 2010



TC-3 (ELC)



- LEGEND**
- HAZARDOUS TREE (SEE CORRESPONDING REPORT AND NOTE #1)
 - EXISTING TREES SUBJECT TO REMOVAL
 - TRANSPLANTABLE BY TREE EXISTING TREE TO BE TRANSPLANTED
 - TREE PROTECTION FENCE
 - PROTECTED VEGETATION AREAS
 - GENERAL TREE CLEARING AREAS
 - STAGE 1B-2 REFERENCE NUMBER

NOTE

1. REFER TO TREE INVENTORY REPORT FOR NUMBERED TREE SIZE AND DESCRIPTION
2. FOR RETAINABLE BUTTERNUTS, SEE BUTTERNUT MANAGEMENT REPORT (2008) BY RENZI ENVIRONMENTAL

NOTE RE: MIGRATORY BIRDS ACT
NO TREE CUTTING OR REMOVAL IS TO OCCUR DURING THE PERIOD BETWEEN APRIL 30 AND JULY 31 IN ACCORDANCE WITH THE REQUIREMENTS OF THE MIGRATORY BIRDS ACT

**BIG BAY POINT RESORT COMMUNITY,
TOWN OF INNISFIL
Tree Clearing Plan**

LOCATION: BIG BAY POINT
NEW ROAD ROW (N/S) EAST LIMIT
OF SITE AND PROPERTY EDGE
AT EXISTING RESIDENTIAL AREA

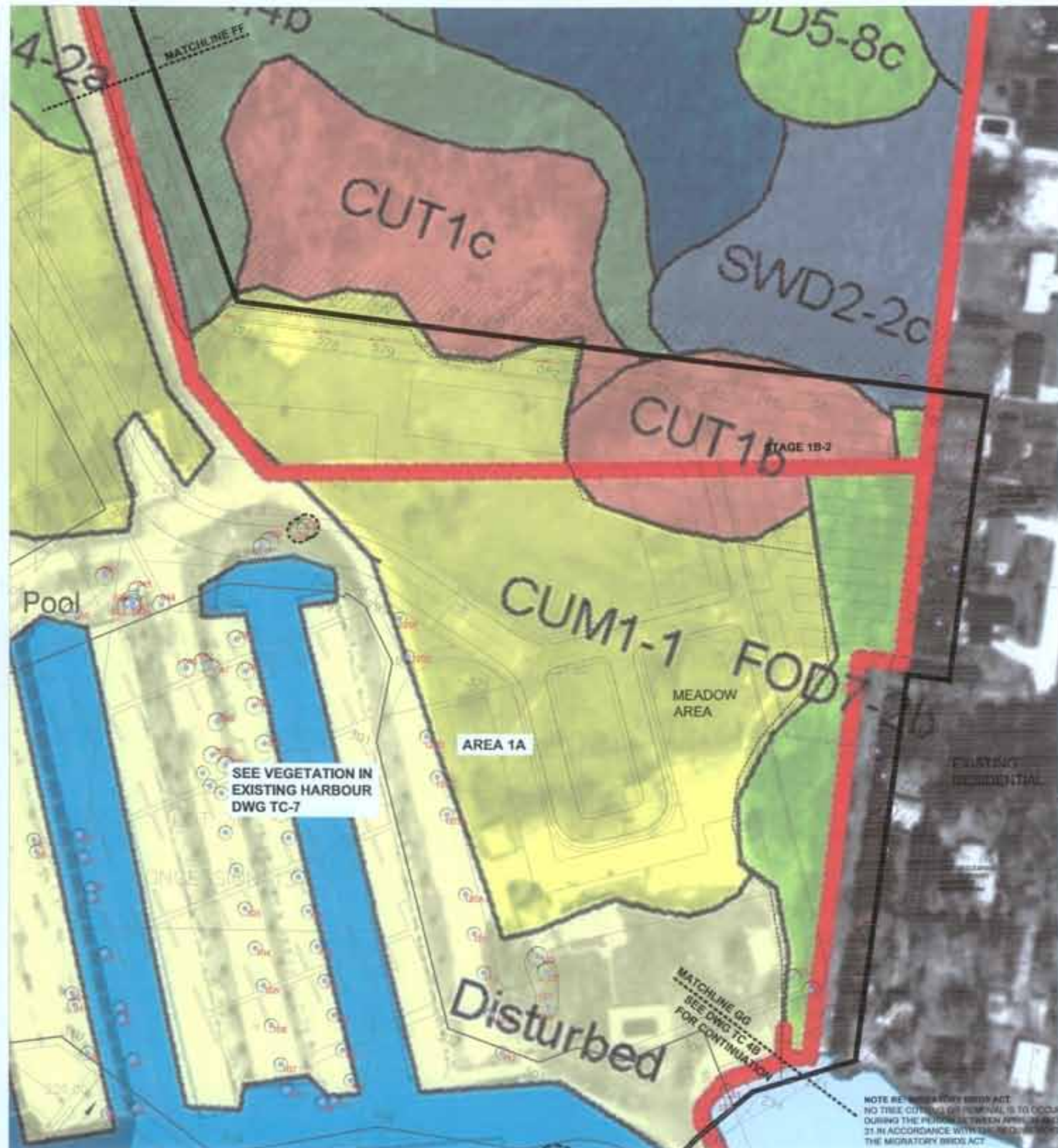
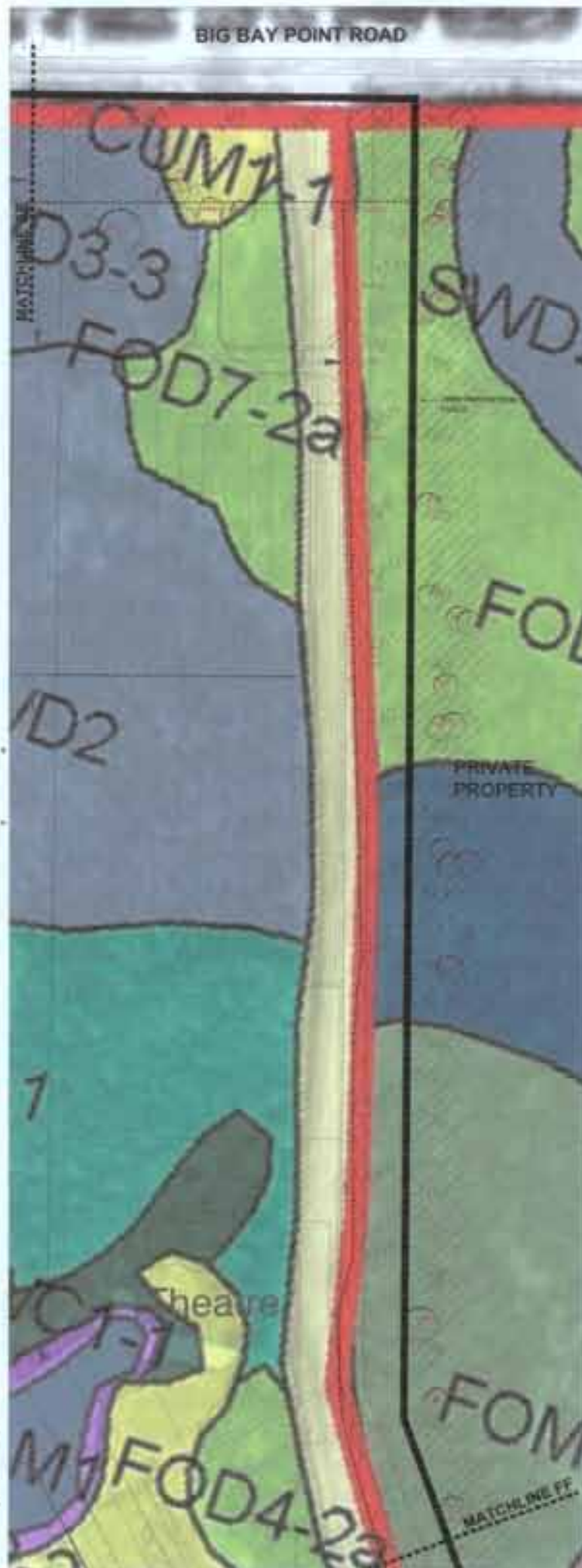
SCHOLLEN & Company Inc.
220 Duncan Mill Road, Suite 109
Don Mills, Ontario M3B 3L5
Tel: 416-441-3044
Fax: 416-441-6010



Project No. 27008

Issued for Approval January 6, 2010

TC-4A



Legend

Orange box	Limit of Development	Green box	Continuous Forest
Light green box	Deciduous Forest	Light green box	Mixed Forest
Yellow box	Agricultural	Purple box	Meadow Marsh
Red box	Cultural Hedge	Dark purple box	Shallow Marsh
Yellow box	Cultural Meadow	Blue box	Mixed Shallow Aquatic
Light blue box	Cultural Plantation	Dark blue box	Shallow Aquatic
Orange box	Cultural Thicket	Dark green box	Continuous Swamp
Light blue box	Cultural Woodland	Light blue box	Deciduous Swamp
Yellow box	Disturbed	Dark blue box	Mixed Swamp

INVENTORY BY GARDNER LEE AND BEACON ENVIRONMENTAL

- LEGEND**
- Red circle with '000' inside: MARKED TREE (SEE CORRESPONDING REPORT AND NOTE #1)
 - Blue circle with '000' inside: EXISTING TREES SUBJECT TO REMOVAL
 - Dashed line: TREE PROTECTION FENCE
 - Diagonal hatching: PROTECTED VEGETATION AREAS
 - Small circle with number: SURVEY STAKE REFERENCE NUMBER
- NOTE:**
- REFER TO TREE INVENTORY REPORT FOR NUMBERED TREE SIZES AND DESCRIPTION
 - FOR RETAINABLE BUTTERFLY MANAGEMENT REPORT (2008) BY BEACON ENVIRONMENTAL

**BIG BAY POINT RESORT COMMUNITY,
TOWN OF INNISFIL
Tree Clearing Plan
Ecological Land Classification**

LOCATION: **BIG BAY POINT**
NEW ROAD ROW (N/S) EAST LIMIT
OF SITE AND PROPERTY EDGE
AT EXISTING RESIDENTIAL AREA

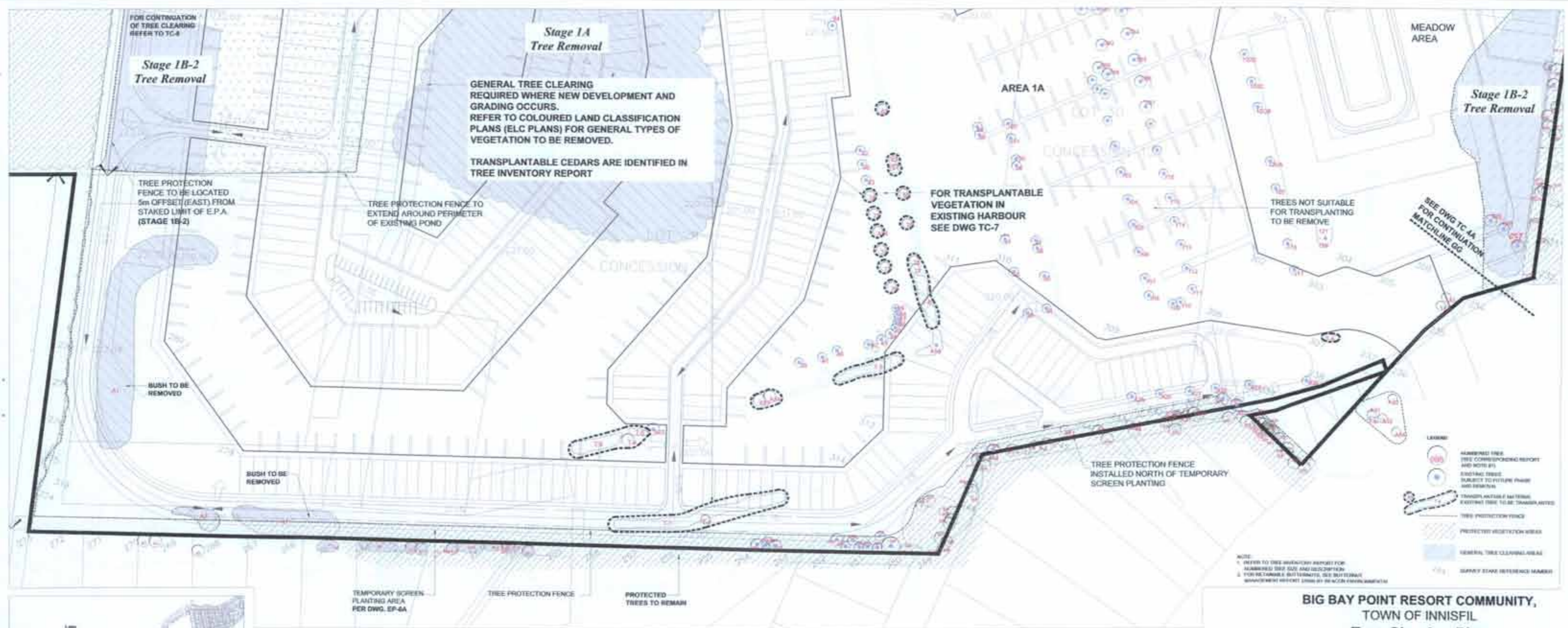
SCHOLLEN & Company Inc.
220 Duncan Mill Road, Suite 109
Don Mills, Ontario M3B 3J5
Tel: 416-441-3044
Fax: 416-441-6010

Project No: 27008

NOTE RE MIGRATORY BIRDS ACT
NO TREE CUTTING OR REMOVAL IS TO OCCUR
DURING THE PERIOD BETWEEN APRIL 30 AND JULY
31 IN ACCORDANCE WITH THE REQUIREMENTS OF
THE MIGRATORY BIRDS ACT

Issued for Approval January 6, 2010

TC-4A (ELC)



**BIG BAY POINT RESORT COMMUNITY,
TOWN OF INNISFIL
Tree Clearing Plan**

LOCATION: BIG BAY POINT SOUTH LIMIT OF SITE
NEW ROAD ROW (E/W) AND SOUTH PROPERTY EDGE
AT EXISTING RESIDENTIAL AREA

SCHOLLEN & Company Inc.
220 Duncan Mill Road, Suite 109
Don Mills, Ontario M3B 3J6
Tel: 416-441-3044
Fax: 416-441-0010

Project No: 27008

Issued for Approval January 6, 2010

NOTE RE: MIGRATORY BIRDS ACT
NO TREE CLIPPING OR REMOVAL IS TO OCCUR
DURING THE PERIOD BETWEEN APRIL 30 AND JULY
31 IN ACCORDANCE WITH THE REQUIREMENTS OF
THE MIGRATORY BIRDS ACT

TC-4B



- LEGEND**
- MARKED TREE (SEE CORRESPONDING REPORT AND NOTE #)
 - EXISTING TREE (SUBJECT TO REMOVAL)
 - TREE PROTECTION FENCE
 - PROTECTED VEGETATION AREA
 - SURVEY STAKE REFERENCE MARKER
- NOTE:**
- REFER TO TREE MARKING REPORT FOR MARKED TREE SIZE AND DESCRIPTION
 - FOR RETAINING & BUTTERNETS, SEE AUTUMN MANAGEMENT REPORT (DRAFT) BY SCHOLLEN ENVIRONMENTAL

Legend

Ecological Land Classification	Color
Agricultural	Yellow
Cultural Hedge	Orange
Cultural Meadow	Light Green
Cultural Paddock	Light Blue
Cultural Timberland	Light Purple
Disturbed	Yellow
Continuous Forest	Dark Green
Deciduous Forest	Light Green
Mixed Forest	Medium Green
Meadow Marsh	Light Blue
Shallow Marsh	Light Purple
Mixed Shallow Aquatic	Light Blue
Shallow Aquatic	Light Blue
Continuous Swamp	Dark Green
Disturbed Swamp	Light Blue
Mixed Swamp	Light Blue

MARKING BY CORTNER LEE AND SIOCK ENVIRONMENTAL

NOTE RE: MIGRATORY BIRD ACT
 NO TREE CUTTING OR REMOVAL IS TO OCCUR DURING THE PERIOD BETWEEN APRIL 30 AND JULY 31 IN ACCORDANCE WITH THE REQUIREMENTS OF THE MIGRATORY BIRD ACT

**BIG BAY POINT RESORT COMMUNITY,
 TOWN OF INNISFIL
 Tree Clearing Plan
 Ecological Land Classification**

LOCATION: BIG BAY POINT SOUTH LIMIT OF SITE
 NEW ROAD ROW (E/W) AND SOUTH PROPERTY EDGE
 AT EXISTING RESIDENTIAL AREA

SCHOLLEN & Company Inc.
 220 Duncan Mill Road, Suite 109
 Don Mills, Ontario M3B 3J5
 Tel: 416-441-3044
 Fax: 416-441-0010

Project No: 27008
 Issued for Approval January 8, 2010

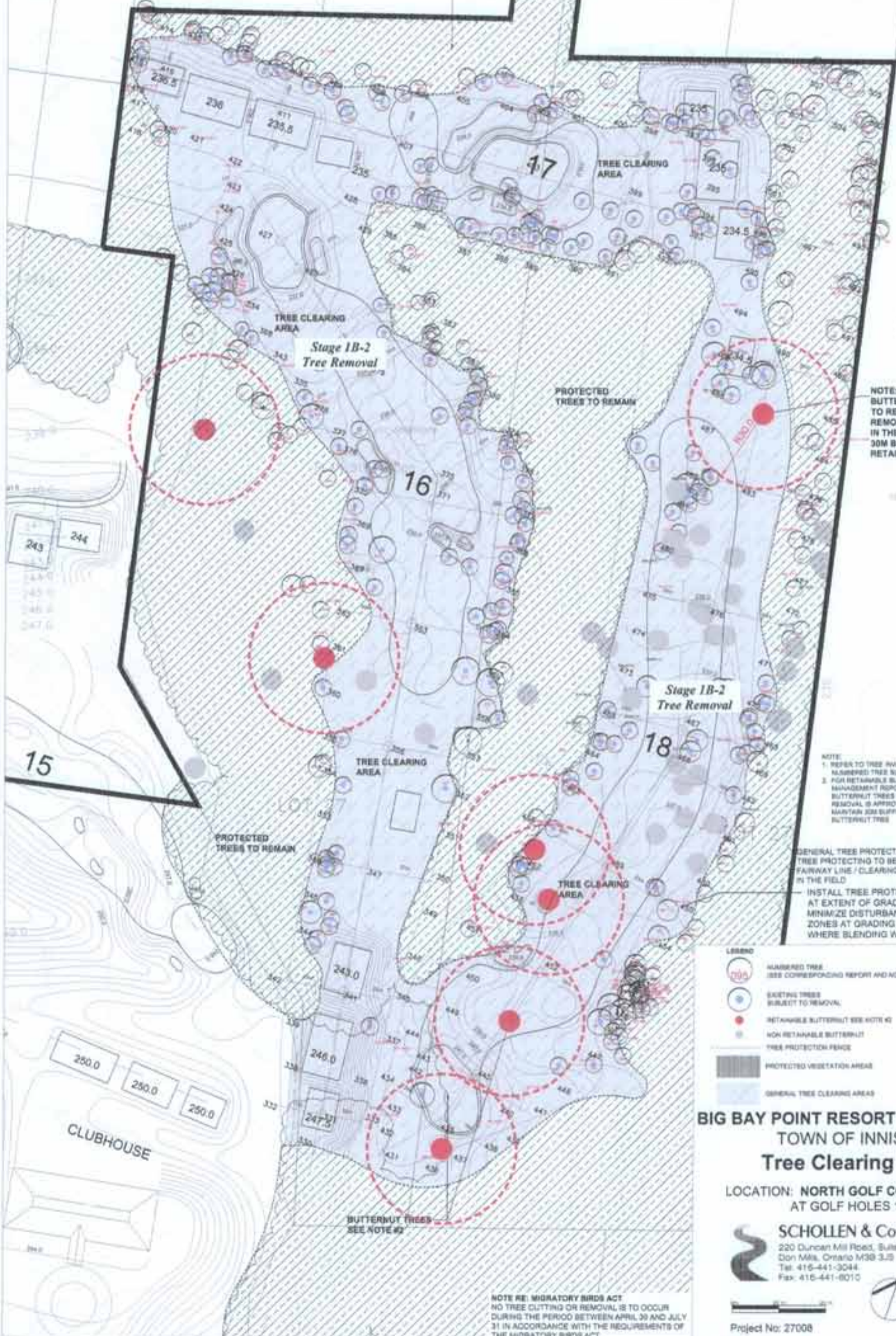
TC-4B (ELC)

25
SSION 13



Key Plan

PROTECTED
TREES TO REMAIN



NOTE:
BUTTERNUT TREES (SHOWN RED)
TO REMAIN UNTIL FUTURE
REMOVAL IS APPROVED BY MNR.
IN THE SHORT TERM, MAINTAIN
30M BUFFER ZONE AROUND EACH
RETAINABLE BUTTERNUT TREE

NOTE:
1. REFER TO TREE INVENTORY REPORT FOR
NUMBERED TREE SIZE AND DESCRIPTION
2. FOR RETAINABLE BUTTERNUTS, SEE BUTTERNUT
MANAGEMENT REPORT (DWS) BY SEACOR ENVIRONMENTAL
BUTTERNUT TREES (SHOWN RED) TO REMAIN UNTIL FUTURE
REMOVAL IS APPROVED BY MNR. IN THE SHORT TERM,
MAINTAIN 30M BUFFER ZONE AROUND EACH RETAINABLE
BUTTERNUT TREE

GENERAL TREE PROTECTION NOTE:
TREE PROTECTING TO BE INSTALLED AT LIMIT OF
FAIRWAY LINE / CLEARING LINE TO BE FINALIZED
IN THE FIELD
INSTALL TREE PROTECTION FENCING
AT EXTENT OF GRADING NEW LINE
MINIMIZE DISTURBANCES TO ROOT
ZONES AT GRADING TRANSITION
WHERE BLENDING WITH EXISTING

- LEGEND
- HAZARDOUS TREE
SEE CORRESPONDING REPORT AND NOTE #11
 - EXISTING TREES
SUBJECT TO REMOVAL
 - RETAINABLE BUTTERNUT SEE NOTE #2
 - NON RETAINABLE BUTTERNUT
 - TREE PROTECTION FENCE
 - PROTECTED VEGETATION AREA
 - GENERAL TREE CLEARING AREAS

BIG BAY POINT RESORT COMMUNITY, TOWN OF INNISFIL Tree Clearing Plan

LOCATION: NORTH GOLF COURSE EDGE
AT GOLF HOLES 16 - 18

SCHOLLEN & Company Inc.
220 Duncan Mill Road, Suite 106
Don Mills, Ontario M3B 3L9
Tel: 416-441-3044
Fax: 416-441-8010



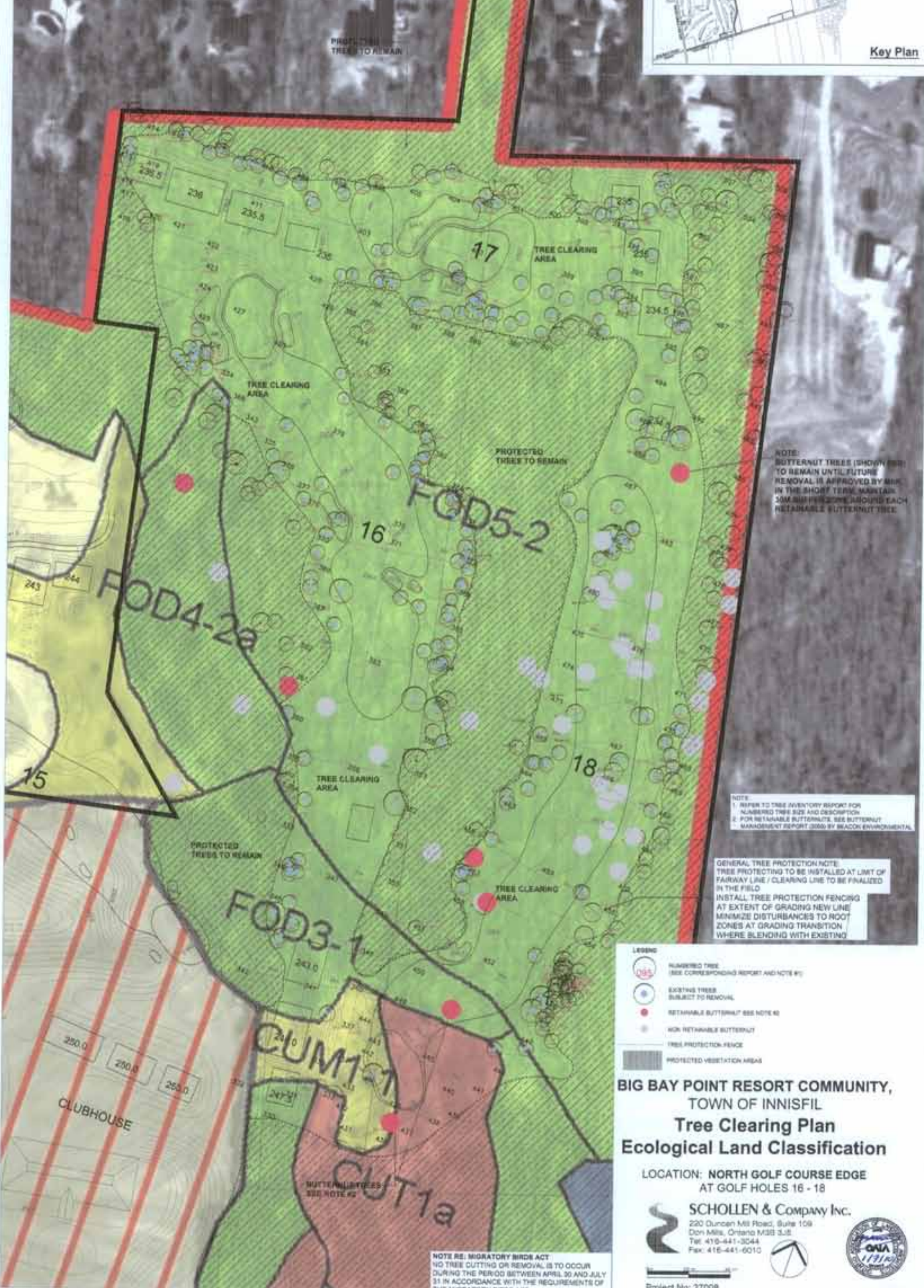
Project No: 27008

NOTE RE: MIGRATORY BIRDS ACT
NO TREE CUTTING OR REMOVAL IS TO OCCUR
DURING THE PERIOD BETWEEN APRIL 30 AND JULY
31 IN ACCORDANCE WITH THE REQUIREMENTS OF
THE MIGRATORY BIRDS ACT

- Legend**
- Line of Development**
- Line of Development
- Ecological Land Classification**
- Agricultural
 - Cultural Hedge
 - Cultural Meadow
 - Cultural Plantation
 - Cultural Thicket
 - Cultural Woodland
 - Disturbed
 - Coniferous Forest
 - Deciduous Forest
 - Mixed Forest
 - Meadow Marsh
 - Shallow Marsh
 - Mixed Shallow Aquatic
 - Shallow Aquatic
 - Coniferous Swamp
 - Deciduous Swamp
 - Mixed Swamp

INVENTORY BY GARDNER LEE AND BEACON ENVIRONMENTAL

BIG BAY POINT ROAD



NOTE: BUTTERNUT TREES (SHOWN IN RED) TO REMAIN UNTIL FUTURE REMOVAL IS APPROVED BY MNR. IN THE SHORT TERM, MAINTAIN 30M BUFFER ZONE AROUND EACH RETAINABLE BUTTERNUT TREE.

NOTE:
1. REFER TO TREE INVENTORY REPORT FOR NUMBERED TREE SIZE AND DESCRIPTION
2. FOR RETAINABLE BUTTERNUTS, SEE BUTTERNUT MANAGEMENT REPORT, 2009 BY BEACON ENVIRONMENTAL

GENERAL TREE PROTECTION NOTE:
TREE PROTECTING TO BE INSTALLED AT LIMIT OF FAIRWAY LINE / CLEARING LINE TO BE FINALIZED IN THE FIELD
INSTALL TREE PROTECTION FENCING AT EXTENT OF GRADING NEW LINE
MINIMIZE DISTURBANCES TO ROOT ZONES AT GRADING TRANSITION WHERE BLENDING WITH EXISTING

- LEGEND**
- NUMBERED TREE (SEE CORRESPONDING REPORT AND NOTE #1)
 - EXISTING TREE SUBJECT TO REMOVAL
 - RETAINABLE BUTTERNUT (SEE NOTE #2)
 - NON RETAINABLE BUTTERNUT
 - TREE PROTECTION FENCE
 - PROTECTED VEGETATION AREAS

**BIG BAY POINT RESORT COMMUNITY,
TOWN OF INNISFIL
Tree Clearing Plan
Ecological Land Classification**

LOCATION: NORTH GOLF COURSE EDGE
AT GOLF HOLES 16 - 18

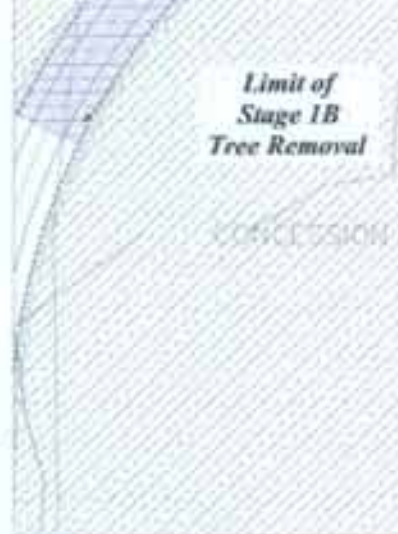
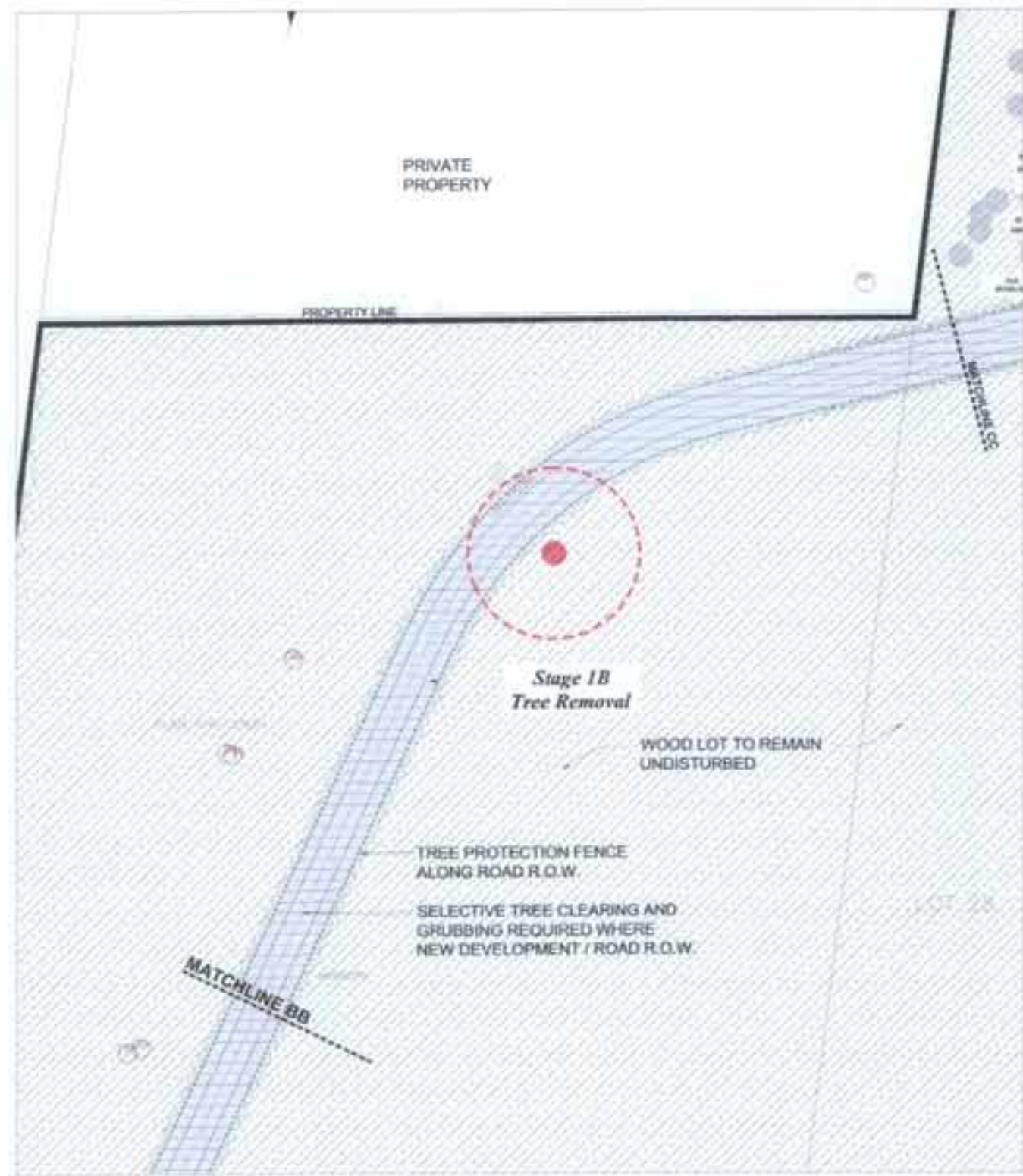
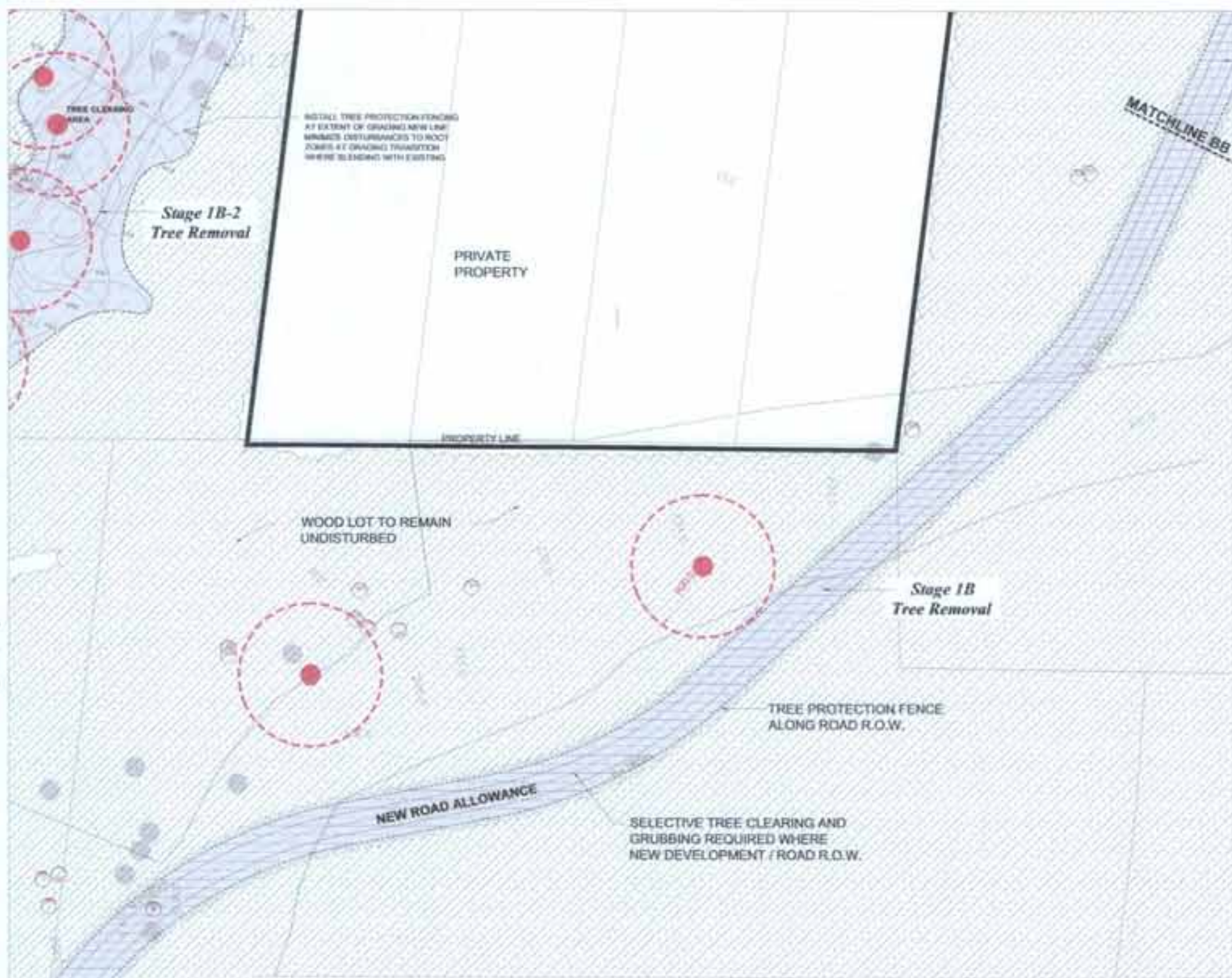
SCHOLLEN & Company Inc.
220 Duncan Mill Road, Suite 109
Don Mills, Ontario M3B 3L8
Tel: 416-441-3044
Fax: 416-441-6010

Project No: 27008
Issued for Approval January 6, 2010



NOTE RE: MIGRATORY BIRDS ACT
NO TREE CUTTING OR REMOVAL IS TO OCCUR DURING THE PERIOD BETWEEN APRIL 30 AND JULY 31 IN ACCORDANCE WITH THE REQUIREMENTS OF THE MIGRATORY BIRDS ACT

TC-5 (ELC)



- LEGEND**
- NUMBERED TREE (SEE CORRESPONDING REPORT AND NOTE #1)
 - EXISTING TREES SUBJECT TO REMOVAL
 - RETAINABLE BUTTERNUT (SEE NOTE #2)
 - NON RETAINABLE BUTTERNUT
 - TREE PROTECTION FENCE
 - PROTECTED VEGETATION AREAS
 - GENERAL TREE CLEARING AREAS

- NOTES**
1. REFER TO TREE INVENTORY REPORT FOR NUMBERED TREE SIZE AND DESCRIPTION
 2. FOR RETAINABLE BUTTERNUTS, SEE BUTTERNUT MANAGEMENT REPORT (DND) BY SEACON ENVIRONMENTAL. BUTTERNUT TREES CHosen NEED TO REMAIN UNTIL FUTURE REMOVAL IS APPROVED BY SRA. IN THE SHORT TERM, MAINTAIN 30M BUFFER ZONE AROUND EACH RETAINABLE BUTTERNUT TREE.

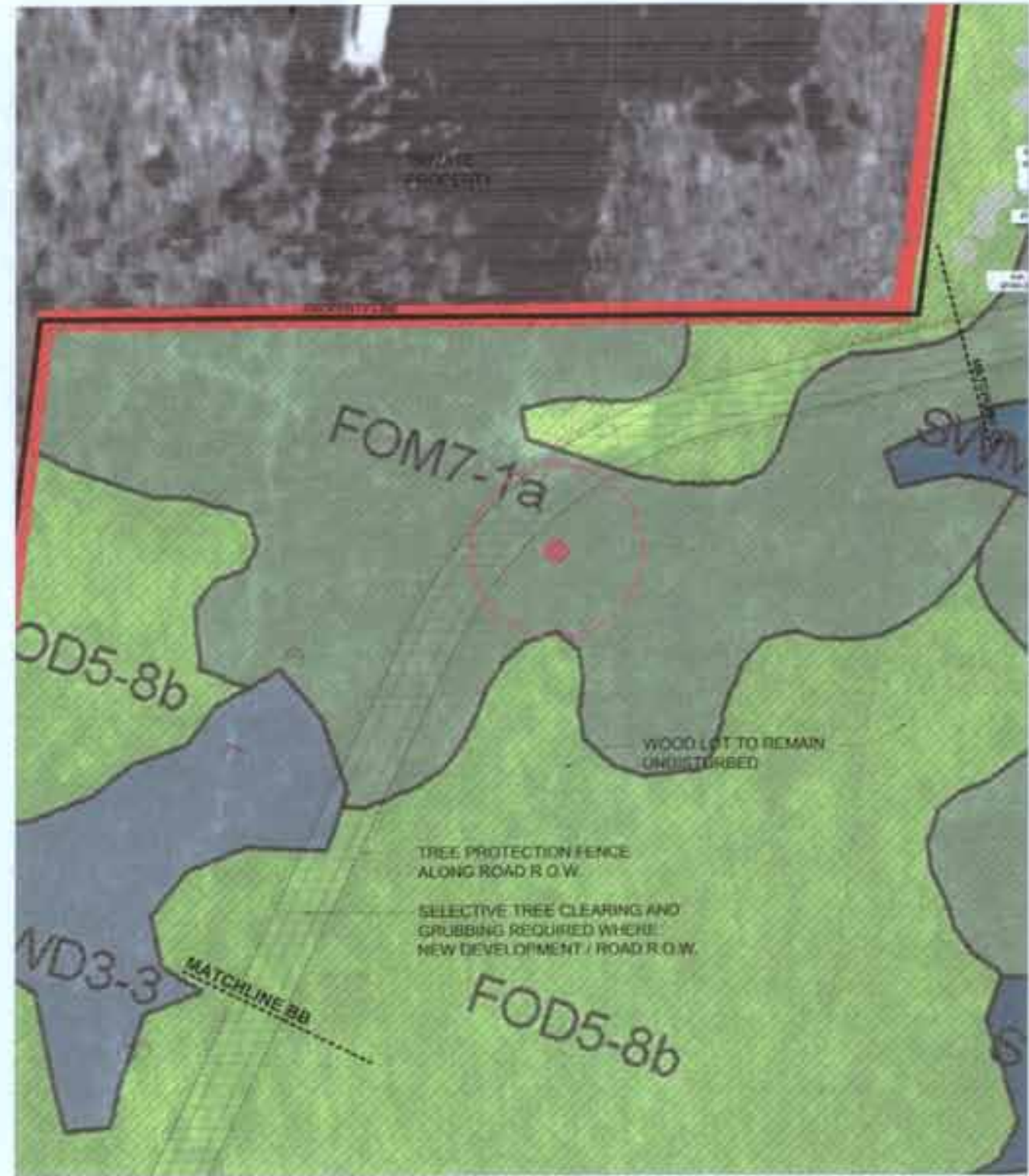
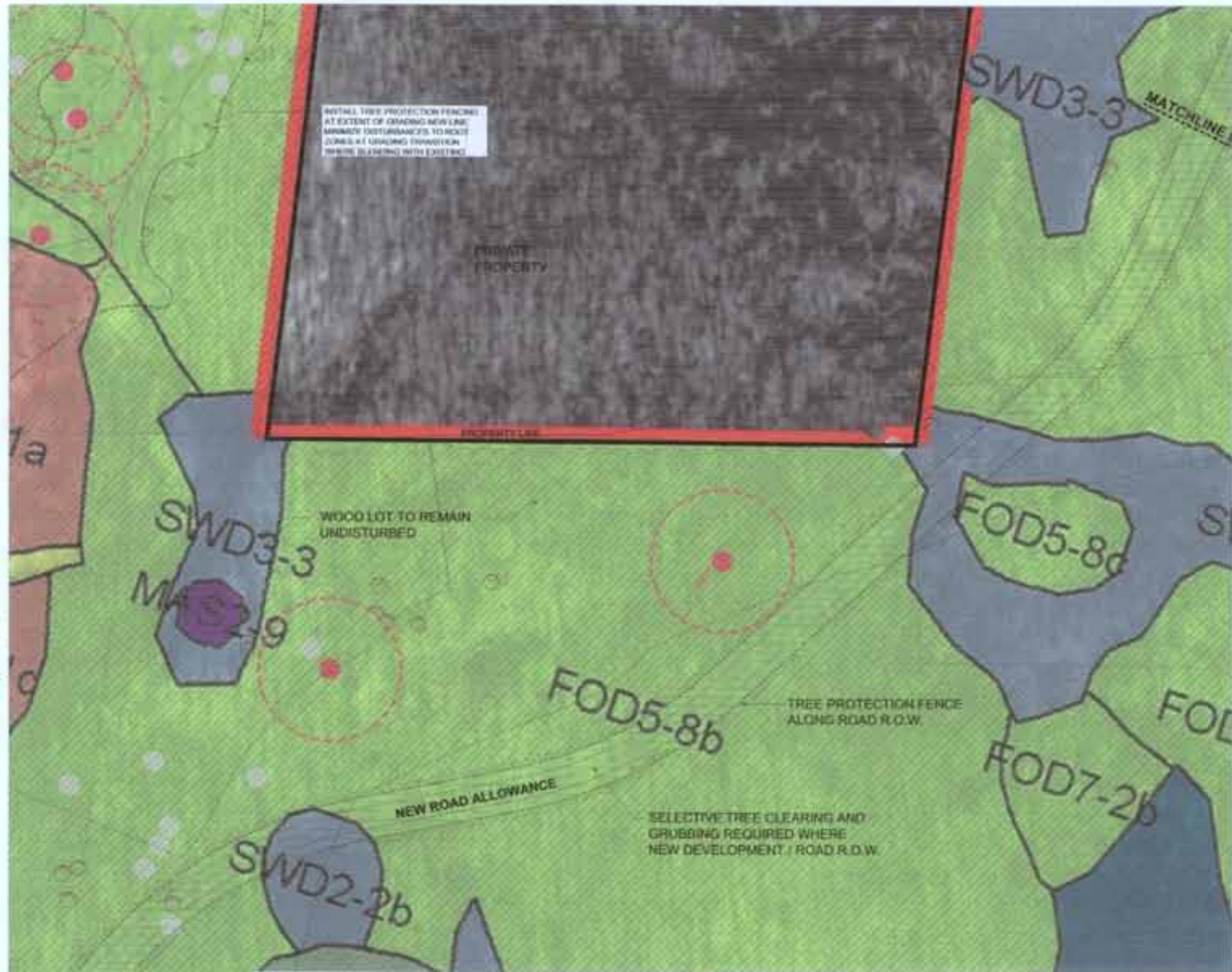
NOTE RE. MIGRATORY BIRDS ACT
 NO TREE CUTTING OR REMOVAL IS TO OCCUR DURING THE PERIOD BETWEEN APRIL 30 AND JULY 31 IN ACCORDANCE WITH THE REQUIREMENTS OF THE MIGRATORY BIRDS ACT

**BIG BAY POINT RESORT COMMUNITY,
 TOWN OF INNISFIL
 Tree Clearing Plan**

LOCATION: BIG BAY POINT ROAD
 PROPOSED MAIN ARTERIAL ROAD (NORTH / SOUTH)

SCHOLLEN & Company Inc.
 220 Duncan Mill Road, Suite 109
 Don Mills, Ontario M3B 3J5
 Tel: 416-441-3044
 Fax: 416-441-6010

Project No: 27008
 Issued for Approval January 6, 2010



Legend

Limit of Development	Coniferous Forest
Agricultural	Deciduous Forest
Cultural Hedge	Mixed Forest
Cultural Meadow	Meadow Marsh
Cultural Plantation	Shallow Marsh
Cultural Thicket	Mixed Shallow Aquatic
Cultural Woodland	Shallow Aquatic
Disturbed	Coniferous Swamp
	Deciduous Swamp
	Mixed Swamp

INVENTORY BY GARTNER LEE AND BEACON ENVIRONMENTAL

LEGEND

005	NUMBERED TREE (SEE CORRESPONDING REPORT AND NOTE #1)
010	REMOVE TREE SUBJECT TO REMOVAL
015	RETAINABLE BUTTERNUT (SEE NOTE #2)
020	NON RETAINABLE BUTTERNUT
---	TREE PROTECTION FENCE
---	PROTECTED VEGETATION AREA

NOTE:
 1. REFER TO TREE INVENTORY REPORT FOR NUMBERED TREE SIZE AND DESCRIPTION
 2. FOR RETAINABLE BUTTERNUTS, SEE BUTTERNUT MANAGEMENT REPORT (2006) BY BEACON ENVIRONMENTAL

NOTE RE: MIGRATORY BIRDS ACT
 NO TREE CUTTING OR REMOVAL IS TO OCCUR DURING THE PERIOD BETWEEN APRIL 30 AND JULY 31 IN ACCORDANCE WITH THE REQUIREMENTS OF THE MIGRATORY BIRDS ACT

**BIG BAY POINT RESORT COMMUNITY,
 TOWN OF INNISFIL**
Tree Clearing Plan
Ecological Land Classification
 LOCATION: BIG BAY POINT ROAD
 PROPOSED MAIN ARTERIAL ROAD (NORTH / SOUTH)

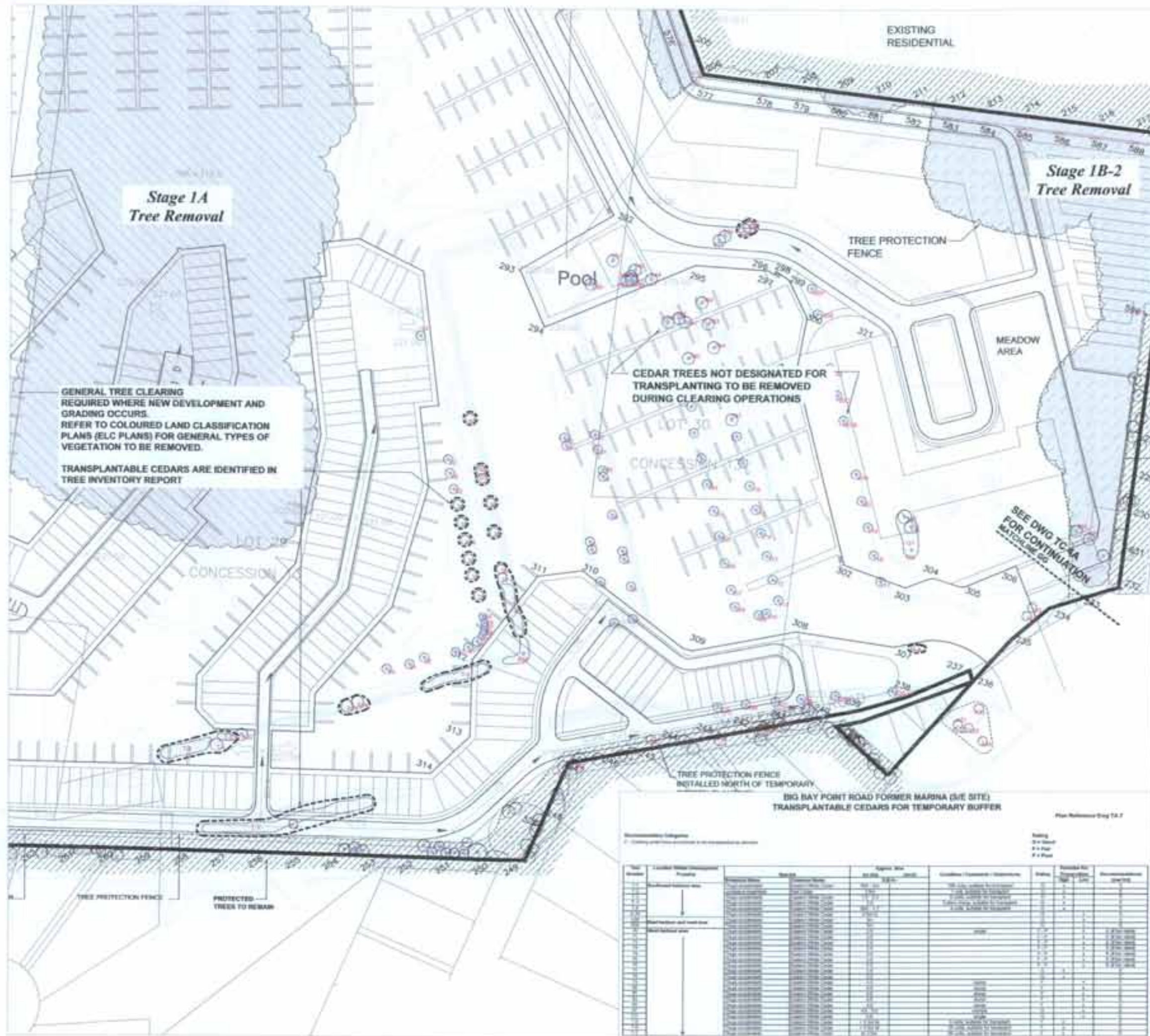
SCHOLLEN & Company Inc.
 200 Duncan Mill Road, Suite 100
 Don Mills, Ontario M3B 3J5
 Tel: 416-441-3044
 Fax: 416-441-0010



Project No: 27008

Issued for Approval January 6, 2010

TC-6 (ELC)



- LEGEND**
- Numbered Tree (See Corresponding Report and Note #1)
 - Existing Trees Subject to Removal
 - Transplantable Mature Existing Tree to be Transplanted
 - Protected Vegetation Areas
 - General Tree Clearing Areas
 - Survey Stake Reference Marker
- NOTE**
- REFER TO TREE INVENTORY REPORT FOR NUMBERED TREE SIZE AND DESCRIPTION
 - FOR TRANSPLANTABLE BUFFER TREES, SEE BUFFER MANAGEMENT REPORT (BMR) BY BRACON ENVIRONMENTAL
- NOTE RE: MIGRATORY BIRDS ACT**
NO TREE CUTTING OR REMOVAL IS TO OCCUR DURING THE PERIOD BETWEEN APRIL 30 AND JULY 31 IN ACCORDANCE WITH THE REQUIREMENTS OF THE MIGRATORY BIRDS ACT

**BIG BAY POINT RESORT COMMUNITY,
TOWN OF INNISFIL
Tree Clearing Plan**

LOCATION: BIG BAY POINT FORMER MARINA (S/E) SITE
VEGETATION IN EXISTING HARBOUR

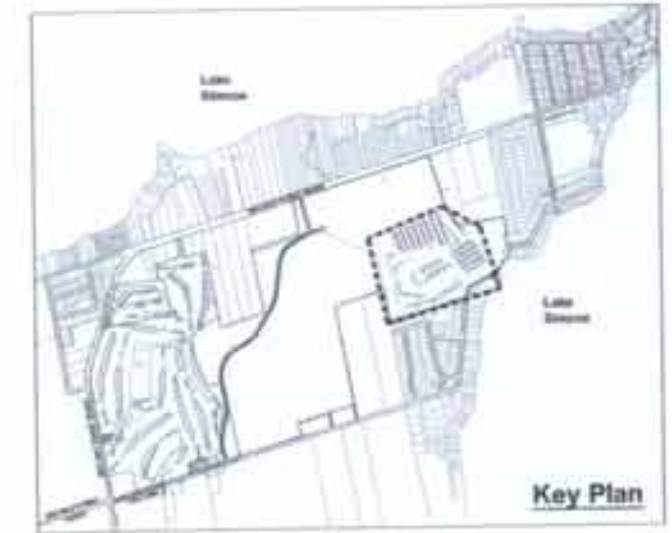
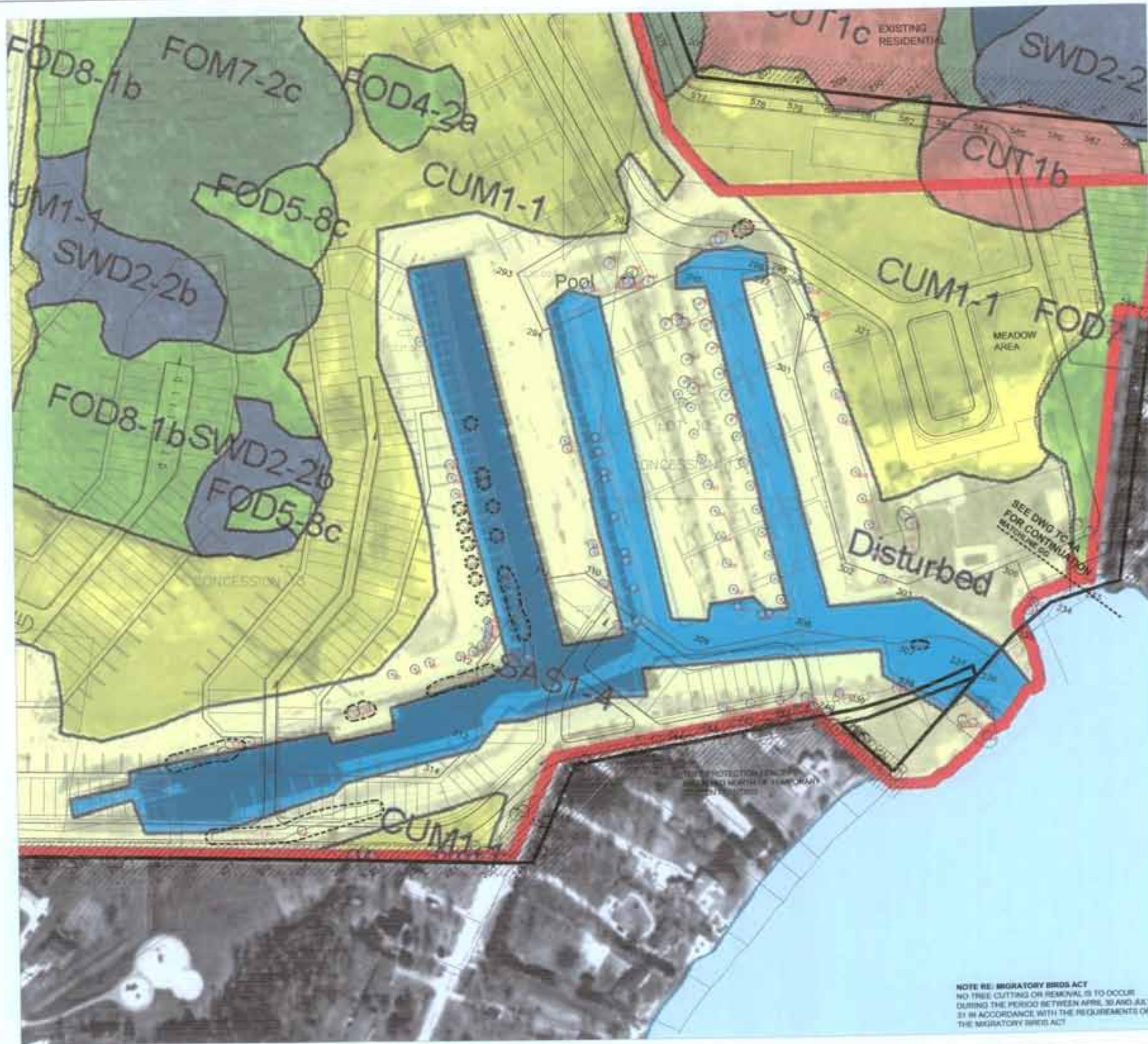
SCHOLLEN & Company Inc.
220 Duncan Mill Road, Suite 100
Don Mills, Ontario M3B 3J5
Tel: 416-441-3044
Fax: 416-441-0010



Project No: 27008

Issued for Approval January 6, 2010

TC-7



Legend

Ecological Land Classification	Color
Level of Development	Orange
Agricultural	Yellow
Cultural Hedge	Red
Cultural Meadow	Yellow-Green
Cultural Plantation	Light Green
Cultural Thicket	Light Blue
Cultural Woodland	Light Yellow
Disturbed	Light Green
Coniferous Forest	Dark Green
Deciduous Forest	Light Green
Mixed Forest	Light Green
Meadow Marsh	Light Green
Shallow Marsh	Light Green
Mixed Shallow Aquatic	Light Blue
Shallow Aquatic	Light Blue
Coniferous Swamp	Dark Green
Deciduous Swamp	Light Green
Mixed Swamp	Light Green

INVENTORY BY DARTNER LEE AND BEACON ENVIRONMENTAL

- LEGEND
- NUMBERED TREE (SEE CORRESPONDING REPORT AND NOTE #1)
 - EXISTING TREES SUBJECT TO REMOVAL
 - PROTECTED VISITATION AREA
 - SURVEY STAKE REFERENCE MARKER
- NOTE:
1. REFER TO TREE INVENTORY REPORT FOR NUMBERED TREE SIZE AND DESCRIPTION
 2. FOR RETAINABLE BUTTERFLIES, SEE BUTTERFLY MANAGEMENT REPORT (2008) BY BEACON ENVIRONMENTAL

**BIG BAY POINT RESORT COMMUNITY,
TOWN OF INNISFIL
Tree Clearing Plan
Ecological Land Classification**

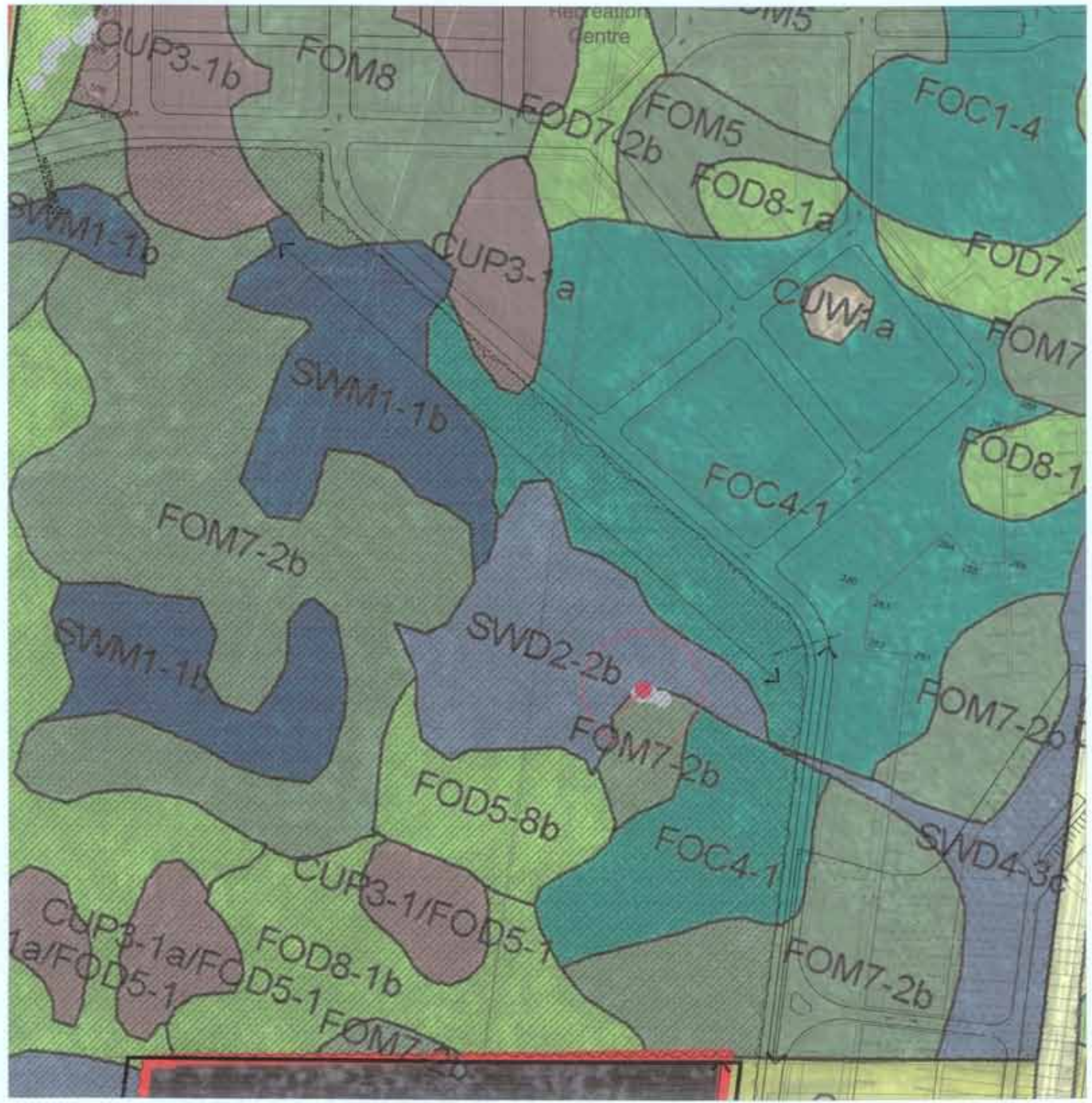
LOCATION: BIG BAY POINT FORMER MARINA (S/E) SITE
VEGETATION IN EXISTING HARBOUR

SCHOLLEN & Company Inc.
220 Duncan Mill Road, Suite 103
Don Mills, Ontario M3B 3J9
Tel: 416-441-2044
Fax: 416-441-6010



Project No: 27008
Issued for Approval January 6, 2010

TC-7 (ELC)



Legend

Limit of Development	Coniferous Forest
Ecological Land Classification	Deciduous Forest
Agricultural	Mixed Forest
Cultural Hedge	Meadow Marsh
Cultural Meadow	Shallow Marsh
Cultural Plantation	Mixed Shallow Aquatic
Cultural Thicket	Shallow Aquatic
Cultural Woodland	Coniferous Swamp
Disturbed	Deciduous Swamp
	Mixed Swamp

INVENTORY BY GARDNER LEE AND BEACON ENVIRONMENTAL

LEGEND

- RETAINABLE BUTTERNUT (SEE NOTE #1)
- NON-RETAINABLE BUTTERNUT
- PROTECTED VEGETATION AREA

NOTE:

1. REFER TO TREE INVENTORY REPORT FOR NUMBERED TREE SIZE AND DESCRIPTION
2. FOR RETAINABLE BUTTERNUTS, SEE BUTTERNUT MANAGEMENT REPORT (OMB) BY BEACON ENVIRONMENTAL

NOTE RE: MIGRATORY BIRDS ACT
 NO TREE CUTTING OR REMOVAL IS TO OCCUR DURING THE PERIOD BETWEEN APRIL 30 AND JULY 31 IN ACCORDANCE WITH THE REQUIREMENTS OF THE MIGRATORY BIRDS ACT

**BIG BAY POINT RESORT COMMUNITY,
 TOWN OF INNISFIL
 Tree Clearing Plan
 Ecological Land Classification**

LOCATION: BIG BAY POINT WEST LIMIT OF SITE
 NEW ROAD ROW AT WEST PROPERTY EDGE

SCHOLLEN & Company Inc.
 2202 Duncan Mill Road, Suite 100
 Don Mills, Ontario M3B 3J5
 Tel: 416-441-3044
 Fax: 416-441-6010



Project No: 27008
 Issued for Approval January 6, 2010

TC-8(ELC)